

ROAD
TEST

COMET VS. RAMBLER

IND **HOT ROD**

EVERYBODY'S AUTOMOTIVE MAGAZINE

**HOT CHEVYS
FOR 'INDY'**

Latest-
VW HOP-UP KIT

JUNE 1960 35c



ROUNDER

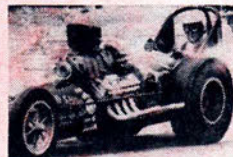
TORQ-THRUST WHEELS...
American's latest engineering feat. Perfectly round, Torq-Thrust wheels have been extensively tested in the laboratory and on the track to assure top performance.



American Racing Equipment magnesium wheels are engineered, manufactured and sold for top performance cars.

The new TORQ-THRUST design with five modified oval spokes is engineered for maximum torque—radial and side loading. Aircraft quality magnesium is used in all our wheel castings. All wheels are finished machined from a precision mandrel in one setup to insure roundness and concentricity, and to improve the inherent balancing characteristics.

Special cap-type lug nuts have been designed for mounting mag wheels on stock length lug studs. In addition to strengthening and simplifying wheel mounting, the special lug nut includes a heavy machined washer to protect the mag wheel from scoring. It also improves the appearance of the car.



Don Garlits, reigning drag king, uses American mag wheels, as do most drag race leaders.

THE AMERICAN WHEEL LINEUP:

15"x3 1/2" spoked front wheel for competition use. 15"x6" Torq-Thrust front or rear wheels for street and competition use. 15"x7" Torq-Thrust front or rear wheels for competition use. 15"x7" conventional dish-type rear wheel for competition use. 15"x8 1/2" Torq-Thrust rear wheels for competition use with slicks. 15"x8 1/2" conventional dish-type rear wheels for competition use. 15"x10" rear wheels for competition use with slicks. 16"x10" Torq-Thrust rear wheels for competition use with slicks.



12 SPOKE FRONT WHEELS...

Designed for direct mounting on most current front spindles, these 3 1/2" x 15" magnesium spoked wheels are furnished complete with bearing cups pressed in place.

Write for descriptive material (be sure to specify mounting dimensions).

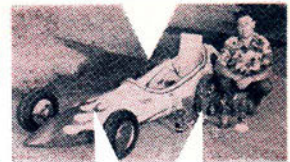
AMERICAN RACING EQUIPMENT

681 Florida St., Dept. HR6, San Francisco 10, Calif.
ATwater 2-2202

Sold through leading speed shops everywhere

STRONGER

HRM



See Page 62

EVERYBODY'S AUTOMOTIVE MAGAZINE

VOL. 13 HOT ROD published Monthly NO. 6



BOB GREENE Editor	WALLY PARKS Editorial Director	R. E. PETERSEN Publisher
RAY BROCK Technical Editor	AL ISAACS Art Director	LEE O. RYAN General Manager
ERIC RICKMAN Photo Editor	A. M. BENEDICT Ad Director	GORDON BEHN Circulation Manager
GEORGE FUKUDA Editorial Design	TOM MEDLEY Ad Manager	TED JOHNSON Business Manager
YVONNE HULL Production	DALE NAEF Ad Sales	BOB NYLUND Credit Manager
MARIE DONNELL Production	DICK JONES Ad Production Mgr.	JACK PRESTON Promotion Manager

FEATURES

Test: Comet vs. Rambler.....	Ray Brock	28
'60 Speedway Preview.....		40
Forty Years of Four-bangers.....	Bob Behme	46
HR Kart Test: Moss Kart.....	John Christy	50
Draggin' Around.....		52
HRM Salutes the Canton Gearjammers.....		86
Pontiac's Tempest 425-A.....		112

TECHNICAL

Build a "Beetlebomb".....	Ray Brock	34
Horsepower.....	Ralph Jennings	79

CARS

Rapid Little Mouse.....	Jim Chasse	55
Oakland Show Champ.....	Eric Rickman	58
Double Puffer.....	Peter Sukalac	60
Gone on Twins.....	Peter Sukalac	62
9-Second Slingshot.....	Dave Scott	64
Bobtailed and Blown.....	Eric Rickman	66
Shutterbug's Pickup.....	Ralph Ehorn	68
That Torrid Texan.....	Peter Sukalac	70
Portland's Pride.....	Peter Sukalac	72
Quick Coupe.....	Dave Scott	74
Wildest Thing in Glass.....	Bruce Zemby	76
Strip T.....	Peter Sukalac	78

DEPARTMENTS

What's New.....	8
Post Entry.....	14
The Latest Gas.....	88
Shop Talk.....	Don Clark 114
Hot Rod Mart.....	122

COVER

Cover V8's attempt to break Indy ranks; this one, the Helse Special, is one of two to brave the Offenbanser dominated Brickyard in '60. Hot rodding engine perfectionist Bruce Crower (shown right) is the builder and tuner chosen for the task. Ektachrome by Eric Rickman.

HOT ROD* U.S. Copyright 1960 by the Petersen Publishing Company, 5959 Hollywood Blvd., Los Angeles 28, Calif. Phone HOLLYWOOD 6-2111. Second-class postage paid at Los Angeles, Calif., and at additional mailing offices. SUBSCRIPTION RATE U.S., U.S. Possessions, Canada—1 year \$3.50, 2 years \$6.00. Single copy 35¢. Other countries—1 year \$4.50, 2 years \$8. ADVERTISING DEPT.: 5959 Hollywood Blvd., Los Angeles 28, Calif. Detroit Office, 3337 Book Bldg., Detroit 26, Mich. Phone WOODWARD 3-8245. New York Office, 17 East 48th St., New York 17, N.Y. Phone PLaza 1-6690. Chicago Office, 360 North Michigan Avenue, Chicago 1, Illinois. Phone FRanklin 2-6067. Cleveland Office, 834 Schofield Bldg., Cleveland 15, Ohio. Phone MAin 1-1139. St. Louis Office, 915 Olive St., Room 939, St. Louis 1, Missouri. Phone GARfield 1-5153. San Francisco Office, 155 Montgomery St., Rm. 210, San Francisco 4, Calif. Phone EXbrook 7-5367. Advertising closes 55 days preceding dateline. CONTRIBUTIONS: Material returned only with self-addressed, stamped envelope. Not responsible for unsolicited material. ADDRESS CHANGES: Give a 3 weeks' notice. Send name of the magazine and an address imprint from a recent issue or state exactly how label is addressed. Send old address as well as new. Printed in U.S.A.

*Trade-mark registered

