

The Chrysler 300/F

An impressive demonstration of Chrysler Corporation engineering in one of the world's finest high-performance automobiles

The first Chrysler 300 was built as an experimental model with some of the most advanced ideas of Chrysler Corporation engineers. Professional test drivers were so impressed by the way it drove that Chrysler decided to make a few available.

This is not a car for the average motorist regardless of his means.

It is a car for the man who loves to drive and drives exceptionally well. For the mature, experienced driver who wants far more in the way of performance and handling than he can find in any production car no matter the price.

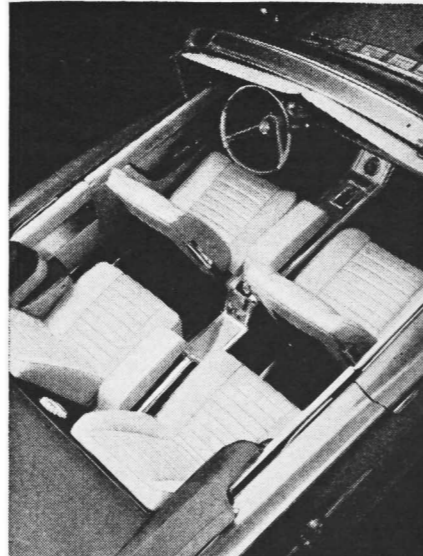
The 300F compares favorably with the most costly European Gran Turismo automobiles in its ability to maintain very high average speeds over any type of road—rough or smooth, flat or hilly, straight or twisted with hairpin curves.

But unlike cars designed primarily for competition, the Chrysler 300F is a comfortable, spacious car, quite distinctive in appearance and most luxurious in its appointments.

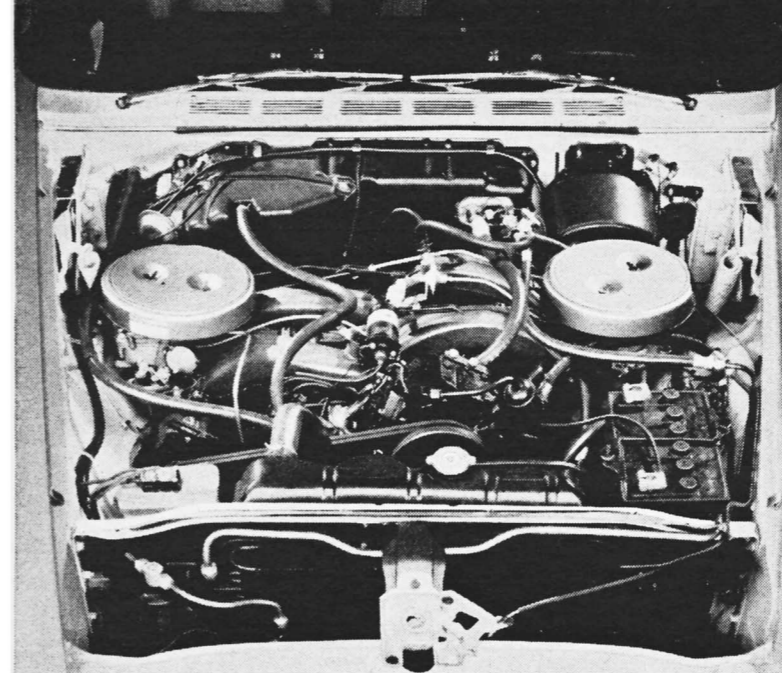
It is not unusual for one of these superb automobiles to cover 600 or 700 miles between morning and dusk. Owners report less fatigue after such trips than at the end of a trip of half that distance in other expensive cars.

300's have an impressive history of record-setting performance on some of the world's toughest courses, yet they handle with an ease and a sense of security unequalled in modern automobiles.

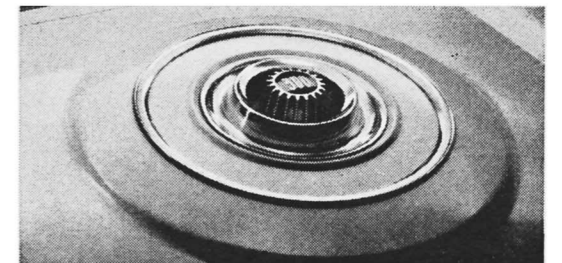
And remember, many of the features, the rugged quality, the ease of handling found in the 300F are engineered into every automobile made by Chrysler Corporation. Try the one that fits you best. Let a drive bring out the difference great engineering makes.



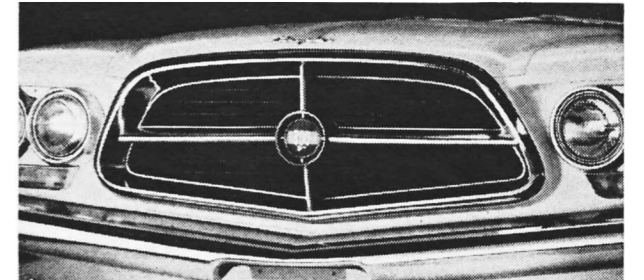
Individual bucket seats, front and rear, upholstered in top grain porous leather.



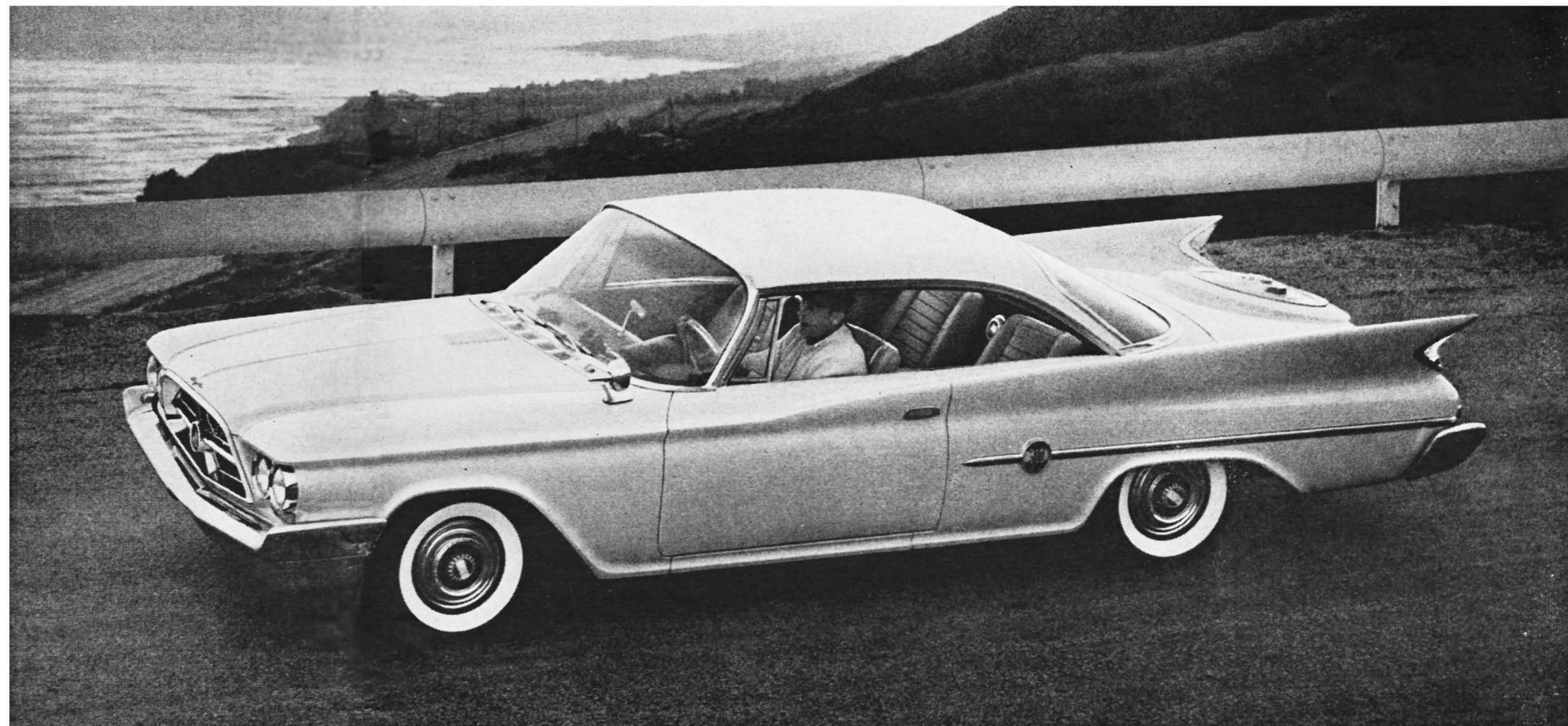
Here's what gives this car its remarkable performance. 375-horsepower Ram Induction engine with twin 4-barrel carburetors.



The 300F medallion is molded like a gear wheel to express the rugged spirit of the car.



The open grille gives the 300F a "Pure automobile" look.



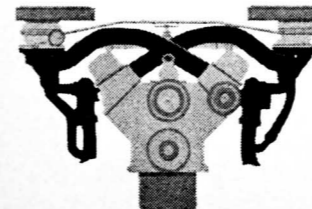
A tachometer shows engine rpm's to tell you when you approach or pass peak performance efficiency.



Bucket seat is designed to give comfortable support from shoulder to knee.

Basic specifications of engine-transmission system:

Piston displacement	413 cu. in.
Bore and stroke	4.18" x 3.75"
Compression ratio	10.1 to 1
Carburetor	2 with 4 barrels each
Horsepower	375 at 5000 rpm (400 at 5200 rpm with optional 4-speed manual transmission)
Torque, lb.-ft.	495 at 2800 rpm



Pure automobile...The Quick, the Strong, and the Quiet

CHRYSLER CORPORATION

VALIANT • PLYMOUTH • DODGE DART • DODGE • DE SOTO • CHRYSLER • IMPERIAL