

HERE ARE A FEW REASONS WHY THE NEW AUSTIN HEALEY 3000 WILL INTRIGUE YOU



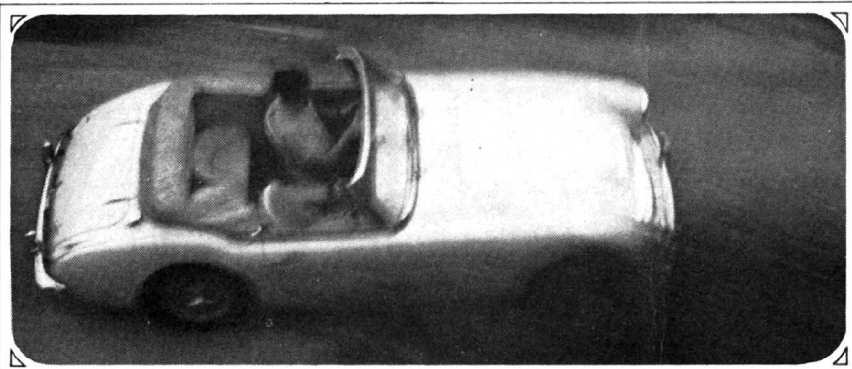
Patrician breeding shows in every sculptured line of the new Austin Healey 3000. She's dressed for the Sixties in a wrap-around windshield, draft-free vents, and a multitude of other refinements for your pleasure and comfort. Her new vinyl-



treated fabric hood can be raised or lowered with one hand. She's graduated from a roadster to a true convertible. In



the sunlight or under the stars, her high-stepping performance lives up to her looks. The 6-cylinder overhead-valve mill will carry you at sustained high speeds... and she's a real neck-snapper if you accelerate at 70. Big disc brakes mean extra safety, and for the statistically-minded, the Austin Healey 3000 has a compression ratio of 9:03 to 1, with



a 3.5-in. stroke in a 3.282-in. bore. The smart efficiency of the cockpit will gladden your heart. The cowled dials are grouped for quick reading; shift and



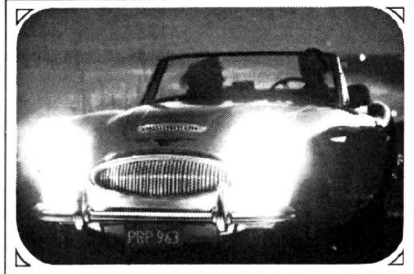
toggle switches are handy. Functional luxury—for a commute or a lazy country ramble. Owners are often prone—to ad-



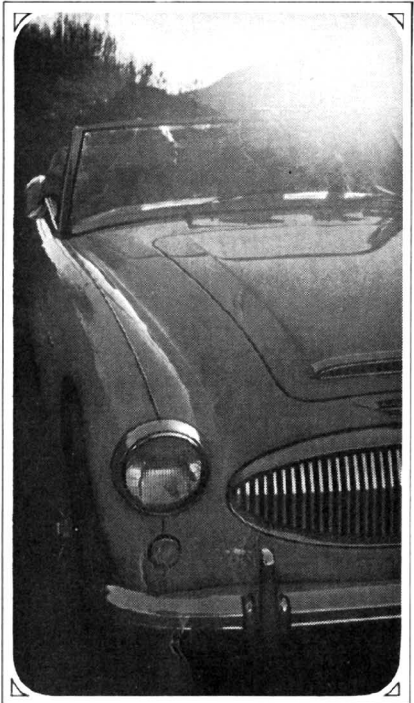
quire the Austin Healey 3000 from every angle. Each subtly sculptured line flows into the next with aerodynamic logic; the



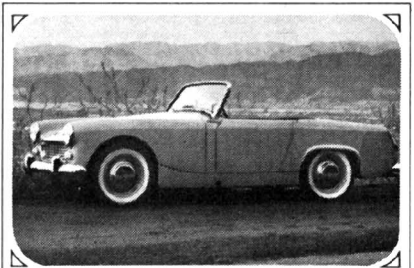
Q.E.D. is a car of impressive appearance and eager power. You can take the tads



along now and then, because this car is an "Occasional four". But before a long trip, recite three times: "Two's company. . . ." You'll get a renewed sense of pleasure every time you step into the



cockpit of this responsive little beauty. Do it soon, because nothing will be so convincing as your own sense of power and pleasure at the wheel.



Rambunctious tomboy sister of the 3000 is the Sprite. She's a classy little package whose twin-carb power will take you over 220 flashing miles on one filling of the 7¼-gallon tank. Stowable hood, oversized brakes, an endurance winner at Sebring. At P.O.E./N.Y., \$1875, you can afford to flirt a little, can't you?

AUSTIN HEALEY

3000 MK. II CONVERTIBLE

PRODUCT OF THE BRITISH MOTOR CORPORATION, LTD., MAKERS OF MG, AUSTIN HEALEY, SPRITE, MORRIS AND AUSTIN CARS

FOR OVERSEAS DELIVERY INFORMATION, WRITE: BMC, DEPT. X-2, 734 GRAND AVENUE, RIDGEFIELD, N. J.