

MORE HIGH-PERFORMANCE HORSEPOWER FROM FORD

MARCH 1964

FIFTY CENTS
60¢ in Canada

ICD

CAR LIFE

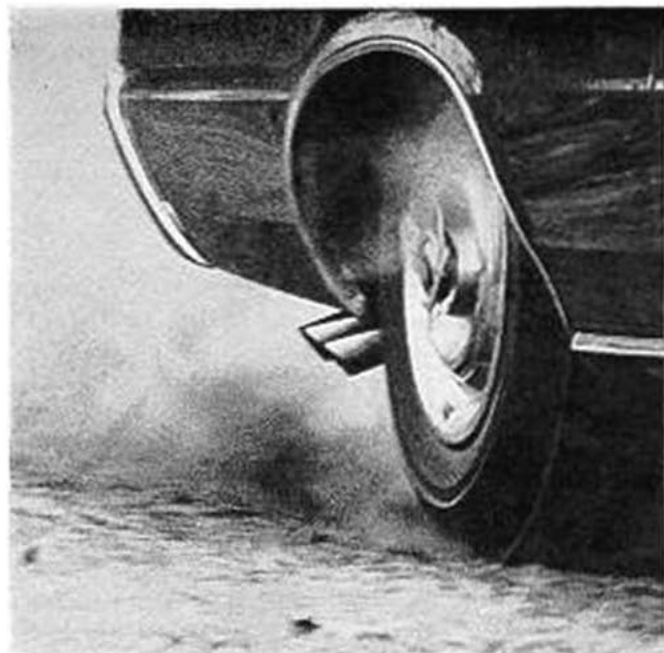
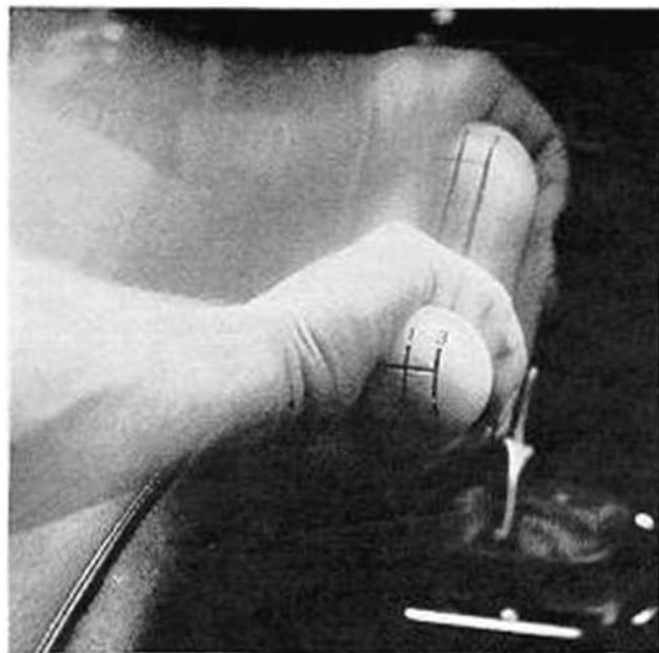
***DODGE 426/4-Speed
Rambler Classic V-8***

Sneak's Peek: FORD'S NEW SPORTS CAR

DUESENBERG MODEL J

road test & technical review
Chevrolet's CHEVELLE





GTO is for kicking up the kind of storm that others just talk up.

Standard Equipment: engine: 389-cu. in. Pontiac with 1-4BBL; bhp—325 @ 4800; torque—428 lb-ft @ 3200 rpm/dual-exhaust system/3-speed slick with Hurst shifter/heavy-duty clutch/heavy-duty springs, shocks, stabilizer bar/special 7.50 x 14 red-line high-speed nylon cord tires (rayon cord whitewalls optional at no extra cost)/14 x 6JK wide-rim wheels/high-capacity radiator / declutching fan / high-capacity battery (66 plate, 61 amp, hr.)/chromed air cleaner, rocker covers, oil filler cap/bucket seats/standard axle ratio 3.23:1 (3.08, 3.30*, 3.55* to 1 available on special order at no extra cost).

And some of our extra-cost Performance Options: engine: 389-cu. in. Pontiac with 3-2BBL (Code #809); bhp—348 @ 4900;

*Axle ratio only with heavy-duty options at slight additional charge.

torque—428 lb-ft @ 3600; 3.55:1 axle ratio standard with this engine option/4-speed with Hurst shifter (gear ratios 2.56:1, 1.91:1, 1.48:1, 1.00:1, and 2.64:1 reverse)/2-speed automatic with 2.20:1 torque converter/Safe-T-Track limited-slip differential (Code #701)/3.90:1 axle ratio available on special order with metallic brake linings, heavy-duty radiator and Safe-T-Track/handling kit—20:1 quick steering and extra-firm-control heavy-duty shocks (Code #612)/high-performance full transistor (breakerless) ignition (Code #671)/tachometer (Code #452)/custom sports steering wheel (Code #524)/exhaust splitters (Dealer installed)/wire wheel discs (Dealer installed)/ custom wheel discs, with spinner and brake cooling holes (Code #521)/console (Code #601).

the GTO makers—Pontiac

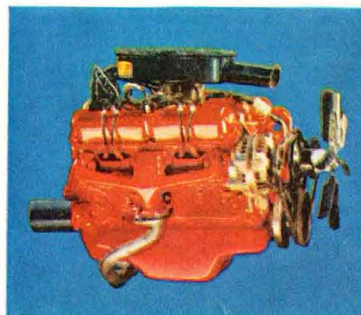
PONTIAC MOTOR DIVISION • GENERAL MOTORS CORPORATION

Valiant/V-8 style



**Now Valiant is the lowest-priced V-8 in the U.S.A.
—and it couldn't happen to a better all-around compact!**

Now—all the zoom-power any compact driver should ever need or want... with a new 180-hp V-8! Valiant drivers have a choice of three engines: the standard 170-cu.-in. "six," the optional 225-cu.-in., 6-cylinder engine or the new V-8, a 273-cu.-in. powerhouse. There's more to Valiant, of course. Such things as styling



you can proudly park anywhere. Such happy-go-sporty options as a vinyl-capped hardtop and the 4-on-the-floor stick with Hurst linkage. And the price makes Valiant/V-8 style America's lowest-priced V-8.* If you need more reasons before you buy, see your Plymouth-Valiant Dealer. **Best man to see—your Plymouth-Valiant Dealer.**

*Based on Manufacturers' Suggested Retail Prices, exclusive of state and local taxes, if any, destination charges and optional equipment.

PLYMOUTH DIVISION



CHRYSLER
MOTORS CORPORATION



EDITORIAL DIRECTOR: JOHN R. BOND

Editor: Dennis Shattuck

Managing Editor: Dave Black

Associate Editor: Gene Booth

Editorial Assistant: Barbara Wine

Art Director: Hal Crippen

Art Associates: Bill Motta, Barbara Boyter,
Ramona Bolhaus

Contributors: Wim van der Graaf, Allen Hunt,
Roger Huntington, Ralph Poole, Don Rosendale

Publishers: John & Elaine Bond

Publishers' Assistant: Jean White

Circulation Manager: Ray Powers

Advertising Director: Ben LaMaster

366 Madison Avenue, New York 17, N.Y.

Eastern Advertising Manager: Ernest Kissmann

Western Advertising Manager: Richard Bartkus

Midwest Advertising Manager: Frank Willard

Advertising Assistants: Shirley Meyers,
Elizabeth Daniel



CAR LIFE is published monthly by Bond Publishing Company, 834 Production Place, Newport Beach, California. Second class postage paid at Newport Beach, California, and at additional mailing offices. Copyright 1964 by Bond Publishing Company.

SUBSCRIPTIONS. U.S., possessions, and Canada: \$5 one year, \$9 two years and \$12 three years. Single copy 50 cents (60 cents in Canada). All other countries: \$6 one year, \$11 two years, \$15 three years. Foreign countries and Canada: remit by money order or draft on a bank in the U.S., payable in U.S. funds.

ADVERTISING. See SRDS. Home office: 834 Production Place, Newport Beach, California; telephone Midway 6-3981. Eastern advertising office: 366 Madison Avenue, New York 17, N. Y.; telephone YUkon 6-1735. Midwest advertising office: 2102 Penobscot Bldg., Detroit 26, Mich.; telephone Woodward 3-1775.

CHANGE OF ADDRESS: At least four weeks notice is required for a change of address. Please furnish both old and new addresses, with an address imprint from a recent issue. Send to:

CAR LIFE, 834 Production Place, Newport Beach, California 92663.

EDITORIAL CONTRIBUTIONS are welcomed by CAR LIFE but cannot be considered unless guaranteed exclusive. Photographs should be released for publication by source. Not responsible for return of unsolicited manuscripts, photos or drawings unless accompanied by a self-addressed stamped envelope.

ROAD TESTS

1964 CHEVELLE
1964 DODGE POLARA 426
1964 RAMBLER CLASSIC V-8

trying out a trio 14
muscular and masculine 53
ideal for leisurely touring 58

FEATURES

GOODBYE, SOUTH BEND
MORE HORSEPOWER FOR HP FORDS
FAIRLANE 427 DRAG-O-MATIC
A SNEAK'S PEAK AT FORD'S NEW SPORTS CAR
AIR-COOLING FOR CARS?
TEEN-AGE REVOLT
COMET CYCLONE
HIGH-FLOWN FALCON
SONS OF SCENI-CRUISER

Hello, Hamilton 12
for chewing up the circuit 22
in drag racing's future 26
styling experiments hold key 30
dispelling some of the hot air 34
seeking a new image 38
where's the chrome room key? 40
a screaming eagle 66
Buick and Olds show vista-domes 76

CLASSIC

1929 DUESENBERG MODEL J

an ultimate automobile 42

TECHNICAL

GM'S NEW TRANSMISSIONS
DESIGNING THE MODERN ENGINE
TECHNICAL CORRESPONDENCE

background on the development 62
Part VI: the ignition system 72
in search of better performance 78

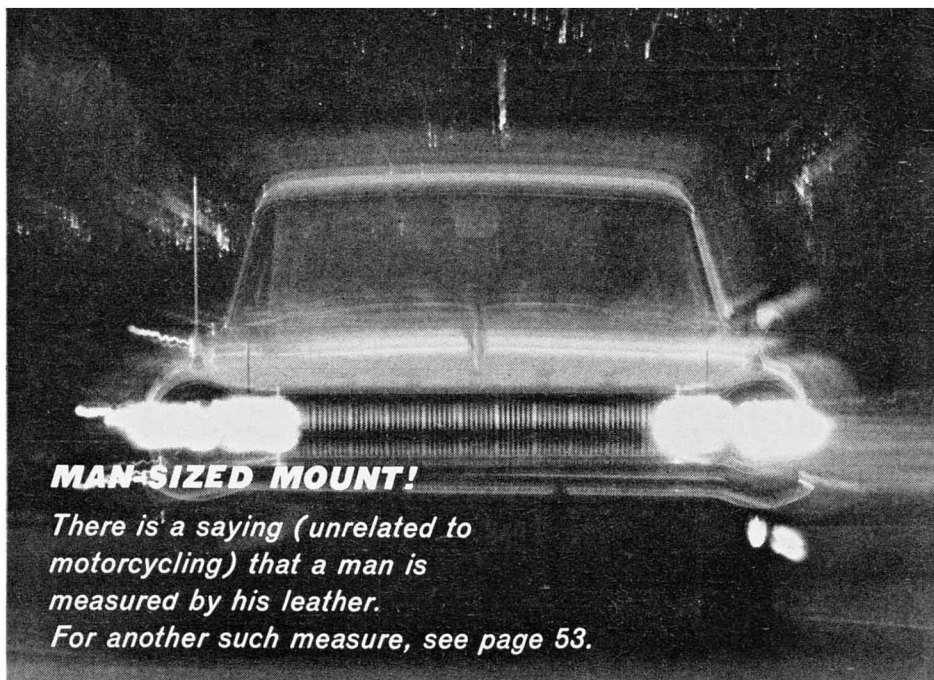
DEPARTMENTS

LETTERS
MOTOR CITY MEMO
OUTLOOK
CALENDAR
AUTOS ABROAD
WINDOW SHOPPING
NEW & USED
REARVIEW MIRROR

bouquets and brickbats 2
a new team of teen-agers 62
formula going up 10
when and where 11
designers' duet 70
goodies, goodies 82
classified advertising 83
long-lived carriage 84

COVER

CHEVELLE MALIBU SUPER SPORT AND EL CAMINO, BY RALPH POOLE



MAN-SIZED MOUNT!

There is a saying (unrelated to motorcycling) that a man is measured by his leather.

For another such measure, see page 53.