



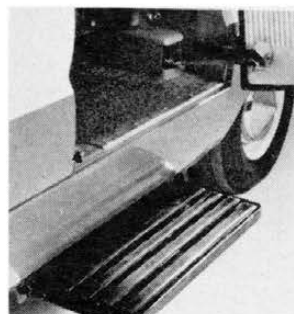
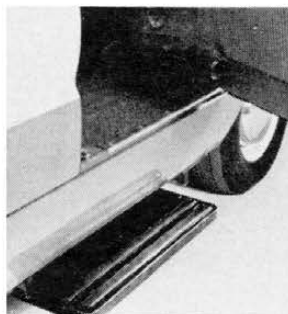
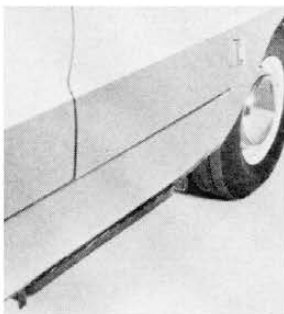
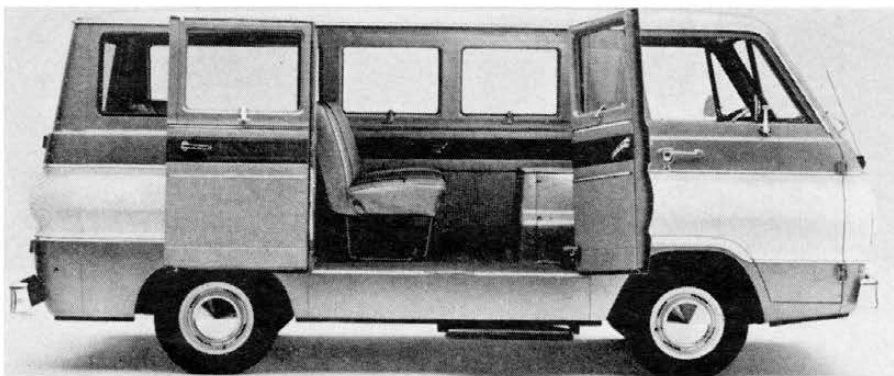
THREE FOR THE LOAD are these newcomers from Dodge. Bus-type station wagon at right will have 9-passenger capacity, automatic transmission.

COMPACT COMMERCIALS

Dodge Expands Its Truck Line

JOINING FORD and Chevrolet in the Volkswagen-inspired trend toward compact commercial vehicles, the

Dodge Division has announced three 90-in. wheelbase models based in part on the highly successful Dart.



The 9-passenger bus, the van and the forward-control pickup all have the Dart's 170-cu. in. Slant Six for power, with the Dart's 225 cu. in. 6-cyl. as an option. As in the Dart, a 3-speed manual transmission is standard equipment, while a 3-speed automatic (LoadFlite) is optional. Axle ratios available are 3.55 or 3.91:1.

Slightly wider than their precursors, the van and bus have a 213-cu. ft. interior while the pickup has a 74-cu. ft. box. Overall length of the van and bus is 170 in., but the pickup is 4 in. shorter. Curb weights range from 2935 to 3090 lb.

Beam-axle and longitudinal leaf spring suspension is used both front and rear. Spring and axle options allow a gross vehicle weight of up to 5200 lb.

Front seats are separate, bucket type, while the bus-type station wagon will also have a 3-passenger walk-by center seat and 4-passenger rear seat.

The engine compartment is between and behind the driver and passenger seats and a cover is lifted for service. It would seem Dodge truck engineers could have saved some more interior space here by using the marine version of the Slant Six, which reclines at about 5° off the horizontal and thus presents a package only about one-third as tall as the automotive unit. ■

STEP POPS out from underside when rear door is opened, disappears as the door is closed. Engine compartment is located between front seats.