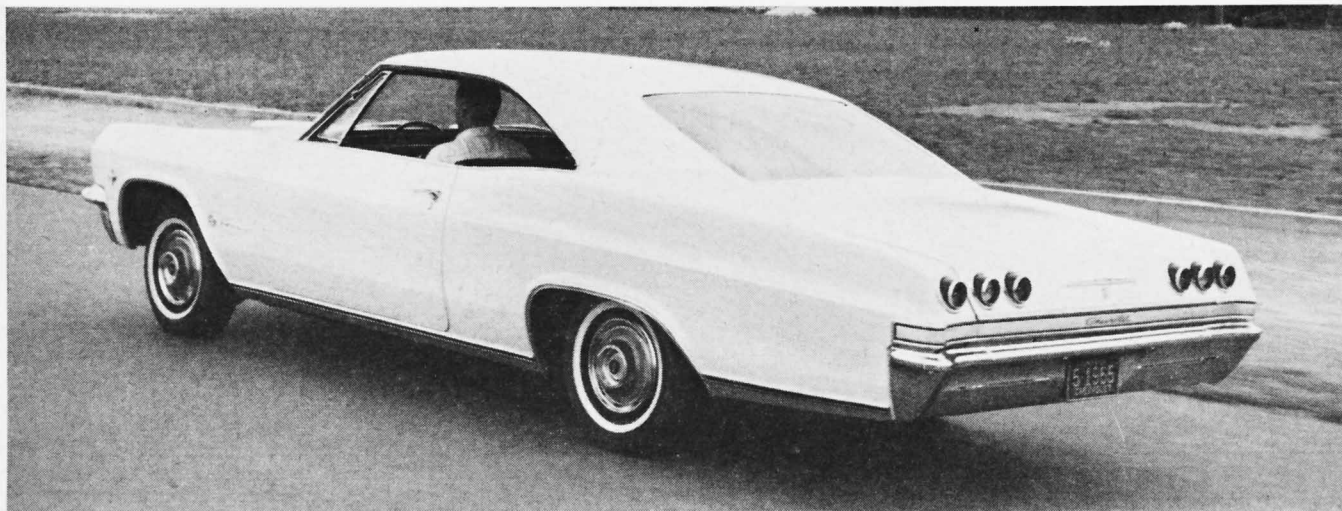


# The Striking '65s



IMPALA SS for '65 will have this "fastline" roof on its hardtop model and special interior trim. Big Chevrolets all have new perimeter frames.

## Chevrolet Impala SS

**B**IG CHEVROLET fans will have an exciting year in 1965—there's more of everything for them at their friendly local dealer. The big Chevrolet itself is larger, roomier, quieter, softer riding and warmed-up in performance. The Impala SS also adds more luxuriousness of appointment to the line.

Perimeter frames, new front and rear suspension, and stronger, quieter bodies have given Chevrolet a smoother than "Jet Smooth" ride. Front and rear tracks have been widened (2.2 in. front, 3.2 in. rear) for greater stability and a new relay steering linkage adapted. Power steering units will be integral with the gear, rather than added on to the linkage.

The Impala and Impala SS series will be highlighted by a "fastline" 2-door hardtop sport coupe, which features the new GM fastback body shape. Curved sideglass helps this sleek top mold into the body lines and rear deck length is notably shorter than the hood. The front end drops off in a powerful Cadillac-like profile, while the quadruple headlights are arrayed horizontally to add breadth. The whole effect is of a powerful, bobbed-tail speedster.

Impala SS models will carry special instrumentation. Tachometer or vacuum gauge, rally-type chronometer, ammeter, oil pressure and engine temperature gauges are included in a simulated wood panel. A special black vinyl in-

terior option will be available for all Impalas and bucket seats will be standard equipment for the SS. A black vinyl roof cover is also available.

Power teams will range from the 230-cu. in., 140-bhp 6-cyl. (7 main) engine and 3-speed manual transmission to the 409 cu. in./400 bhp Turbo-Fire V-8. In between are the 283/195, the 327/250 and 327/300, and the 409/340. The 400-bhp unit will utilize a large 4-barrel Carter AFB carburetor, special camshaft and hydraulic lifters and 11:1 compression to achieve its maximum output rating at 5800 rpm.

This engine can only be equipped with a Muncie 4-speed transmission (part of the package), but this can be had with either the 256 or 220:1 first gearsets; listed drive axle ratio for this combination is 33:1 but 4.11, 4.56 and 4.89 sets will be available (in Positraction) on order.

MASSIVE FRONT for Chevrolet has clean, simple design with die-cast grille section.



POD AT left holds fuel gauge and warning lights, at right is clock. SS has full instrumentation.

