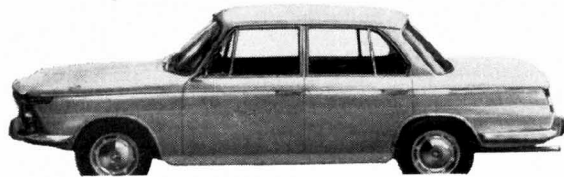


# THE NEW BMW

SERIES 1800 • 1800 TI SPORT • 1500



## THE NEW BMW IS ALL THREE! SPORTS CAR • FAMILY CAR • LUXURY CAR

You may find it hard to believe that any car can be all three. But the new BMW is! It's superb European sports car performance in a 5 passenger, 4 door sedan body with the rich comfort and perfect detailing of a luxury car. And features? Listen: 124 H.P. engine, independent 4-wheel suspension, all synchromesh 4-speed Porsche-type gear box, power assist brakes, discs in front, bucket seats. Whatever you're looking for in a car, remember the new BMW is all three: Sports car, family car, luxury car. It's also one more—economy car! Look at the price.

Series 1800, 102 H.P. **\$3,298**

Series 1800 TI SPORT, 124 HP. **\$3,530**  
(with optional equipment available up to 170 HP).

Series 1500, 90 HP. **\$2,995**

\*Included in prices are 20 features ordinarily considered "extras".

### ACCELERATION DATA

1800 .....0-60 MPH — 13 Seconds

1800 TI Sport...0-60 MPH — under 11 Seconds

Sole U.S. Importer

## HOFFMAN

MOTORS CORPORATION

NEW YORK: 443 Park Avenue

BEVERLY HILLS: 9130 Wilshire Boulevard

\*Suggested price, P.O.E. New York

