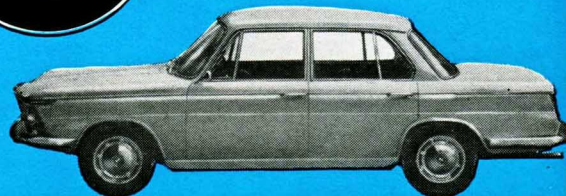


THE NEW BMW



SERIES 1800 ■ 1800 TI SPORT



"A UNIQUE DEVOTION TO TECHNICAL PERFECTION AND DETAILED CRAFTSMANSHIP!" FOR EXAMPLE: 124 H.P. (OPTIONAL EQUIPMENT AVAILABLE UP TO 170 H.P.) WITH OVERHEAD CAMSHAFT AND INCLINED VALVES. INDEPENDENT 4 WHEEL SUSPENSION WITH MAC PHERSON-TYPE SPRING LEG FRONT AXLE AND LONGITUDINAL SWINGING REAR WHEELS. 4-SPEED PORSCHE-TYPE SYNCHROMESH GEARBOX. POWER ASSIST BRAKES WITH DISCS IN FRONT.

Series 1800, 102 H.P. **\$3,298***

Series 1800 TI SPORT, 124 H.P. **\$3,530***
(with optional equipment available up to 170 HP)

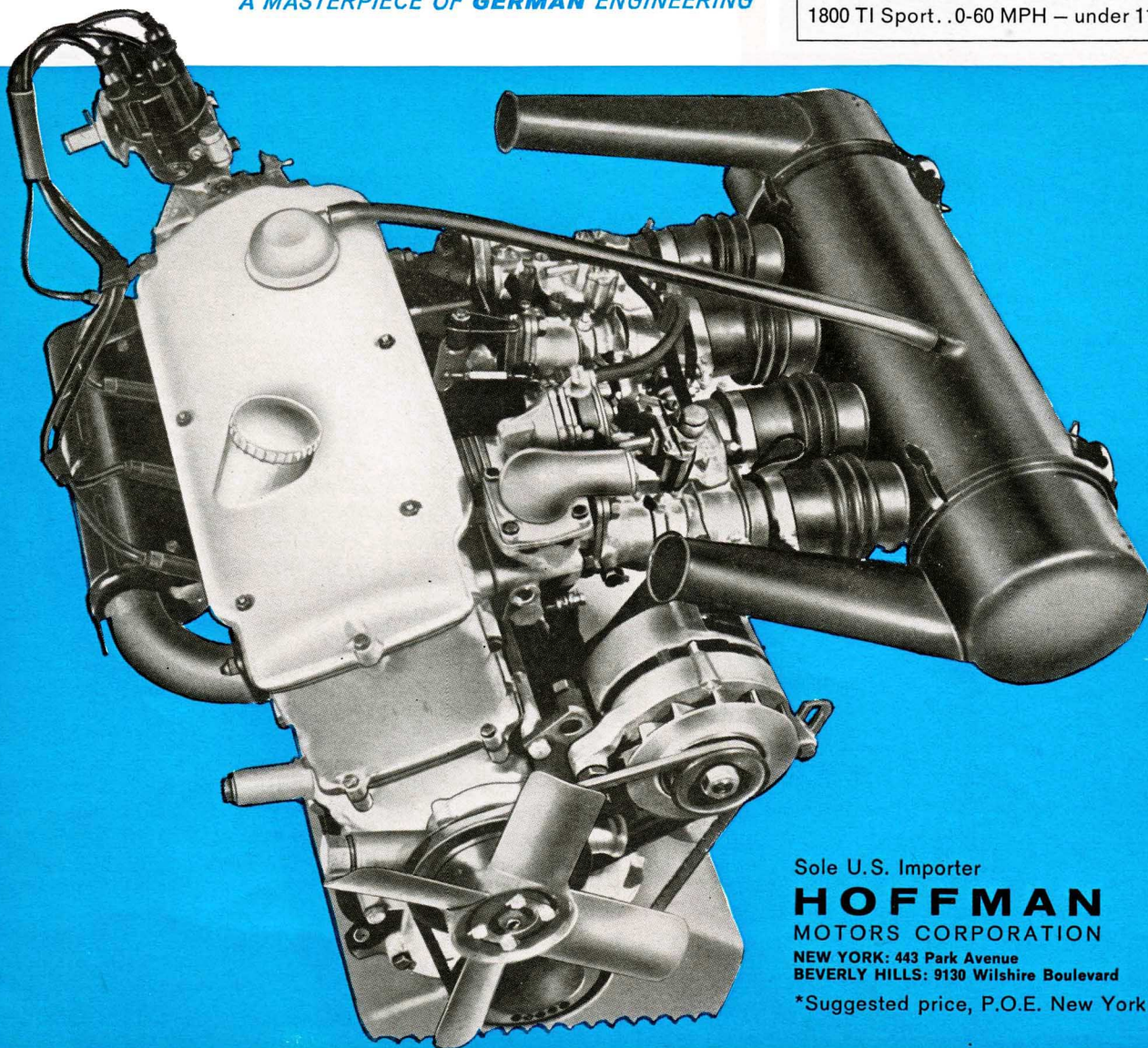
*Included in these prices are 20 "extras" valued up to \$500.

A MASTERPIECE OF GERMAN ENGINEERING

ACCELERATION DATA

1800 0-60 MPH - 13 Sec.

1800 TI Sport. . 0-60 MPH - under 11 Sec.



Sole U.S. Importer

HOFFMAN
MOTORS CORPORATION

NEW YORK: 443 Park Avenue
BEVERLY HILLS: 9130 Wilshire Boulevard

*Suggested price, P.O.E. New York