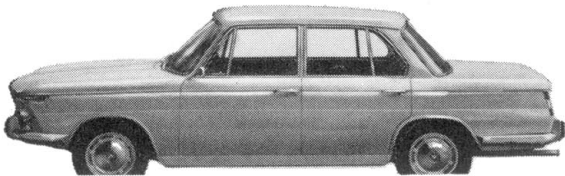


# THE NEW BMW

SERIES 1800 • 1800 TI SPORT • 1500



Now a new series introduced to America by one of the most famous names in European automobiles. The BMW 1800, 1800 TI Sport and 1500. From a 47-year tradition of craftsmanship, technical innovation and international racing success they combine performance values that make them **"the most roadworthy cars in the world."** Just two of the entirely new technical features are: a combination of McPherson type spring front axle together with longitudinal swinging rear wheels, and a 30° slanted suspension motor with overhead camshaft and inclined valves. Inspect the new BMW Series from every angle and you'll find a **devotion to technical perfection and detailed craftsmanship** that is unique in modern manufacture. So is the result. Superb European sports car performance perfectly matched to the rich comfort and detailing of any luxury car.

Series 1800, 102 H.P. **\$3,298**

Series 1800 TI SPORT, 124 HP. **\$3,530**  
(with optional equipment available up to 170 HP).

Series 1500, 90 HP. **\$2,995**

\*Included in prices are 20 features ordinarily considered "extras".



Sole U.S. Importer

**HOFFMAN**

MOTORS CORPORATION

NEW YORK: 443 Park Avenue

BEVERLY HILLS: 9130 Wilshire Boulevard

\*Suggested prices, P.O.E. New York.