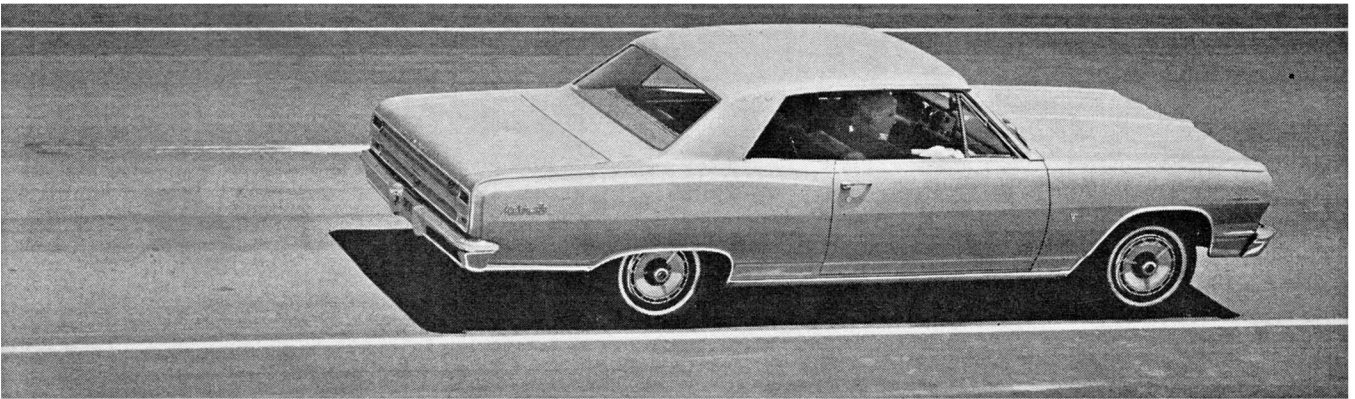


CHEVELLE IS THE CAR



THAT'S MADE BY THE PEOPLE



WHO MAKE THE CORVAIR AND CORVETTE—Meet the Chevelle Malibu Super Sport. Chevelle is Chevrolet's dapper new package—115-inch wheelbase, separate perimeter-type frame, supple Full Coil suspension, and crisp, tasteful styling. Malibu Super Sport is the series, very strong on elegance, that charges Chevelle with a flavor you can trace right back to the Corvaire and Corvette. In a word, sporting. It includes bucket front seats, all-vinyl interior trim, special instrumentation (oil and water temperature gauges and ammeter), and Super Sport wheel disks, trim and identification. Chevelle's performance options* include all-synchro 4-speed shift, Positraction and sintered-metallic brakes. And a 283-cubic-inch 220-hp V8 with 4-barrel carburetion and dual exhausts. Malibu Super Sports come in Coupe or Convertible versions. Both seem like sports cars until you start piling people and luggage into them. . . . Chevrolet Division of General Motors, Detroit, Michigan.



*Optional at extra cost.