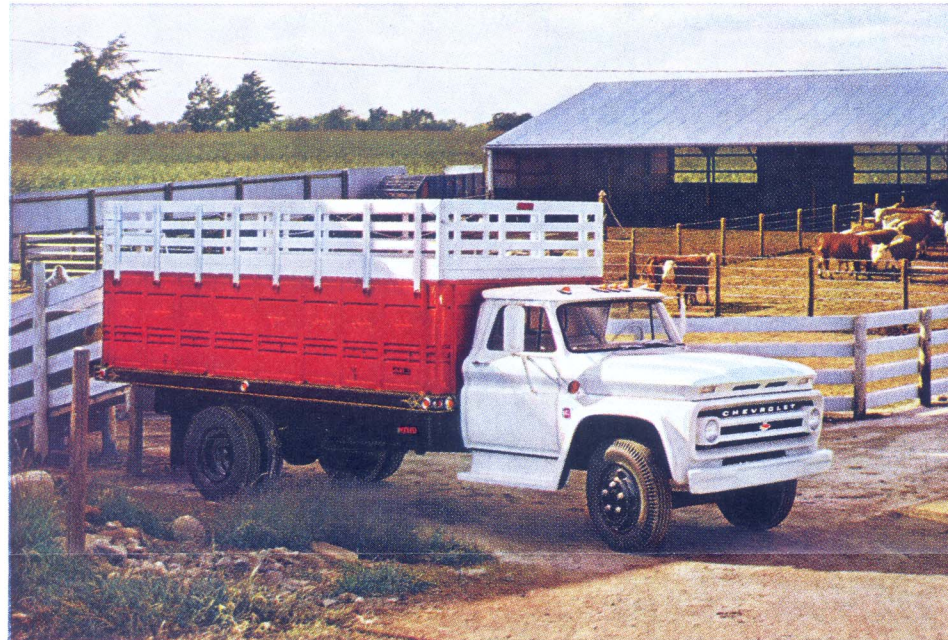




▲ Series 80 409 V8 powered tractor

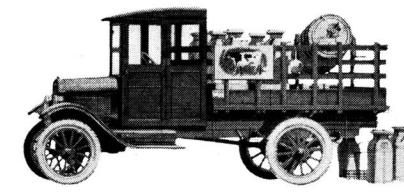
▼ Series 60-H Diesel with bulk milk tank



▲ Series 60 with stock and grain body

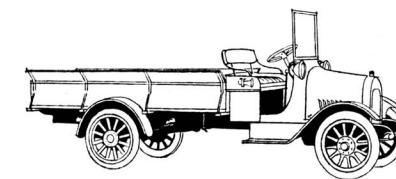


▼ Series C10 8-foot Fleetside Pickup



REMEMBER WHEN CHEVY MADE ONLY LIGHTER FARM TRUCKS?

Now look at the size and scope of the line!



This is a little drawing of the first Chevrolet truck, built in 1918. It had a 4-cylinder valve-in-head engine, 4-speed "selective-type" transmission, wooden artillery-type wheels, and a self-starter. It sold for about \$800.00.

The family has not only grown in numbers but in stature. Today Chevrolet makes dozens of different types and sizes of trucks designed to do any kind of farm or farm-service work.

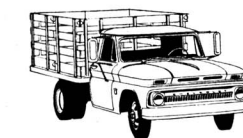
We even make different types of the same kind of truck—pickups, for example. There's the Chevrolet Fleetside with its wide body; the Step-side with convenient loading steps (and a 9-foot body if you need one that big); the Corvair 95 with its unique side ramp and air-cooled engine; and El Camino with its Body by Fisher—the best looking pickup on the market.

If you want some kind of special body on your truck, we have many sizes and types of chassis-cab models to choose from. Wheelbases range from 115 to 197 inches to carry bodies from 6 to 20 feet long.

If you are looking for a good double-purpose vehicle, one that can work as well as transport the family in comfort, we make



one called the Carryall which users like real well. It seats as many as 8, all facing forward, and when you take out the rear seats you have over 8 feet of load space in back. A Carryall is tougher than a station wagon. It is built on a truck chassis and it has a truck engine. It can carry 1,150 lbs. of cargo, and there's a model with 4-wheel drive.



If you need stakes, we have them with bodies ranging from 8 to 12 feet in length with load capacities from 3,400 lbs. to over 10,000 lbs. With stakes removed, you can use them as platform bodies, of course.

So far as heavy-duty work is concerned, our Series 80 trucks can handle any farm or farm-service work we can think of, a few of which are pictured on the opposite page.



Also keep in mind that if you work in areas where conventional trucks have difficulty operating, we have 11 models of 4-wheel-drive farm trucks that can be driven practically any place.

All Chevrolet farm trucks, of course, have all the power they need to do the

work they are designed for. There are four different sizes of 6-cylinder engines up to 292 cu. in., four V8's up to 409 cu. in., and 4- and 6-cylinder Chevy-GM Diesel engines. The advantage of this broad selection is that you never have to buy more power than you need.



Another good thing Chevrolet offers now is a trailing-axle tandem model truck. Originally developed mainly for extra-heavy-duty stock and grain hauling, this model has many applications, especially in the farm-service area such as hauling milk. With this trailing-axle tandem, you can haul 5 tons more than with a single-axle model.

The point to be made here is that Chevrolet has kept up with farm truck requirements as they have changed and increased over the years, and that you can get any type of truck you need these days from your nearby Chevrolet dealer. You know Chevrolet trucks are built right, cost little to operate and maintain, and that when you do need parts or service you can get them without delay. . . . Chevrolet Division of General Motors, Detroit, Michigan.



QUALITY TRUCKS ALWAYS COST LESS!

Telephone your Chevrolet dealer about any type of truck!