

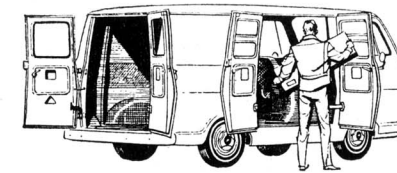


MORE VANS, MORE PANELS FOR MORE JOBS

Biggest selection of covered delivery trucks means you can get the one that's right for your job!



CHEVY-VAN



NEW CHEVY-VAN

Here's an all-new, low-priced delivery van. We think you'll agree that its quality construction makes it the best value in its field.

Its unitized body-frame construction gives a rigid, durable structure. All doors are of double-wall construction.

There's over 40 square feet of flat floor area in the load compartment. You can carry a full ton of cargo in the 211-cu.-ft. load space.

Big double rear doors, opening to over 4 feet in both width and height, are standard. Handy curbside loading doors and windows for rear or side loading doors are extra-cost options.

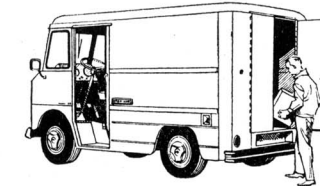
Standard power plant is a big economical 90-hp 4-cylinder engine. For greater performance, there's an extra-cost 120-hp Six.

A 3-speed Synchro-Mesh transmission with steering column shift is standard. For extra driving ease you can select the fully automatic Powerglide at extra cost.

For resistance to corrosion, critical areas, such as rocker panels and wheel housings, are galvanized, and the entire underbody is coated with special preservatives.

NEW STEP-VANS

In addition to the new Chevy-Van there's a new line of high-capacity



forward control vans—the Step-Van Kings—plus new body options which increase the range of sizes available in the Step-Van 7 and regular Step-Van line.

Nominal 10-ft. and 12-ft. Step-Van Kings are offered with extra-height and extra-length options to give eight different sizes in each of two weight classes. Cargo capacity ranges up to nearly 500 cubic feet!

New extra-height and length options are also offered in the Step-Van 7 and regular Step-Van lines. They make available 22 body sizes on models ranging up to 10,000-lb. GVW.

With the broad selection of Chevrolet forward-control vans now offered, you're sure to find one that is sized right for your particular job.



CORVAN

The man who buys a Corvan has needs beyond simple utility in a delivery truck.

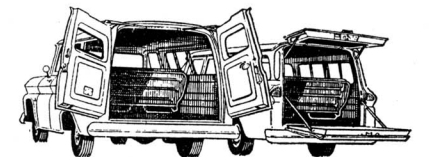
He wants a good-looking van, and Corvan is certainly that!

He wants riding comfort, and no truck can outride a Corvan!

He wants peace of mind in winter and on slippery roads, and Corvan rewards him twice: its air-cooled engine can't freeze, and its location between the rear wheels gives the truck outstanding traction—empty or loaded!

Every Corvan has double rear and curbside loading doors. You can have loading doors on the left side at extra cost.

If you're looking for an extraordinary van built to extraordinary standards, see the Chevrolet Corvan.



PANELS AND CARRYALLS

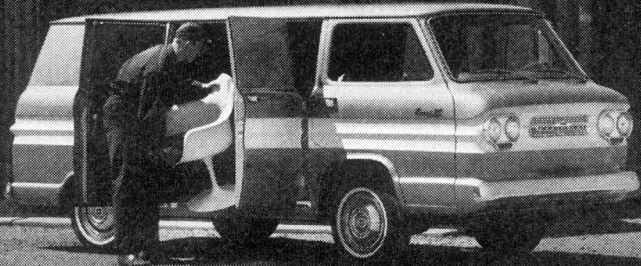
If you prefer conventional styling, good ride and quiet operation, try a regular Chevrolet panel delivery.

The 1/2-ton panel has 7 1/2 feet of load space behind the driver and can carry up to 1,300 lb. of payload.

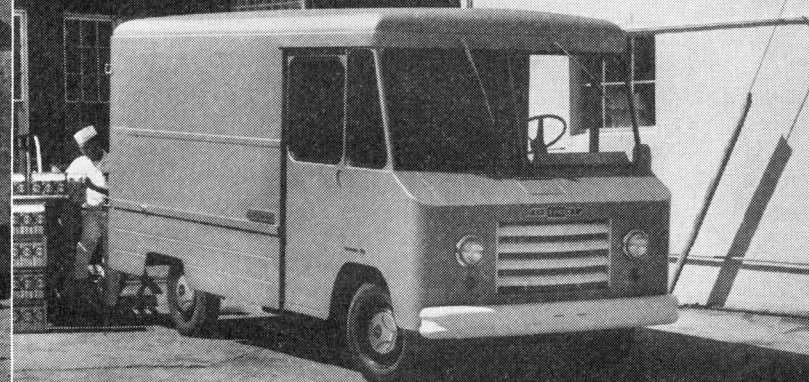
The 1-ton panel gives you over 10 feet of load length and up to 3,300 lb. of payload capacity.

Chevrolet Carryalls are tough multi-purpose vehicles. Standard model seats six. Seating for eight is optional at extra cost. For cargo hauling jobs, the seats can be taken out in minutes.

Carryalls are built on a tough truck chassis with comfortable independent front suspension and rear coil springs. . . . Chevrolet Division of General Motors, Detroit, Michigan.



CORVAN



STEP-VAN KING



STEP-VAN 7 AND 7 1/2-FT. PANEL

QUALITY TRUCKS COST LESS 