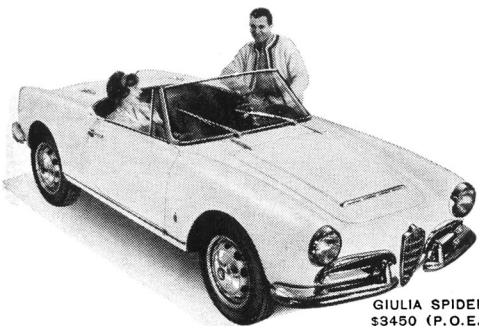


**the only car under \$10,000
with a 5-forward speed
fully synchronized gear box.**



GIULIA SPIDER \$3995 P.O.E.
\$3450 (P.O.E. WEST COAST)

Surprised? Don't be. Five forward speeds are standard equipment on all Alfa Romeos. This enables full utilization of the engine's torque range, providing full-power potential under all circumstances. And provides "down town" traffic flexibility, over-drive economy, and superior hill climbing performance.

Not having five forward speeds, many cars try to compensate with heavy, remote controlled, "bolt-on", overdrive units — optimistically described as the 5th forward speed — and charge for it as an "extra."

Examine the all-aluminum engine, gear box and rear axle housings. Then the disc and aluminum fin brakes. Now add double overhead cam shafts and the result

is a car capable of over 105 miles per hour; 31 miles to the gallon.

Check the standard-equipment-list. It contains most items other makes charge for as "extras." And don't overlook the custom body by Farina. It's a beauty.

For \$2995 (P.O.E.) you can own the 5 passenger Giulia TI Sedan, with all of the above features. For \$4995 (P.O.E.) you can own the six cylinder, 2 + 2, 2600 Spider with 3 dual-throated, Solex carburetors and custom body by Touring. Coupe models available. Also detachable hardtops for all Spiders.

Traveling abroad? Save money. Order here. Pick up overseas. Ask your dealer for details.



**alfa
romeo**

231 Johnson Ave., Newark 8, N.J. • 1700 Daisy Ave., Long Beach 13, Calif.