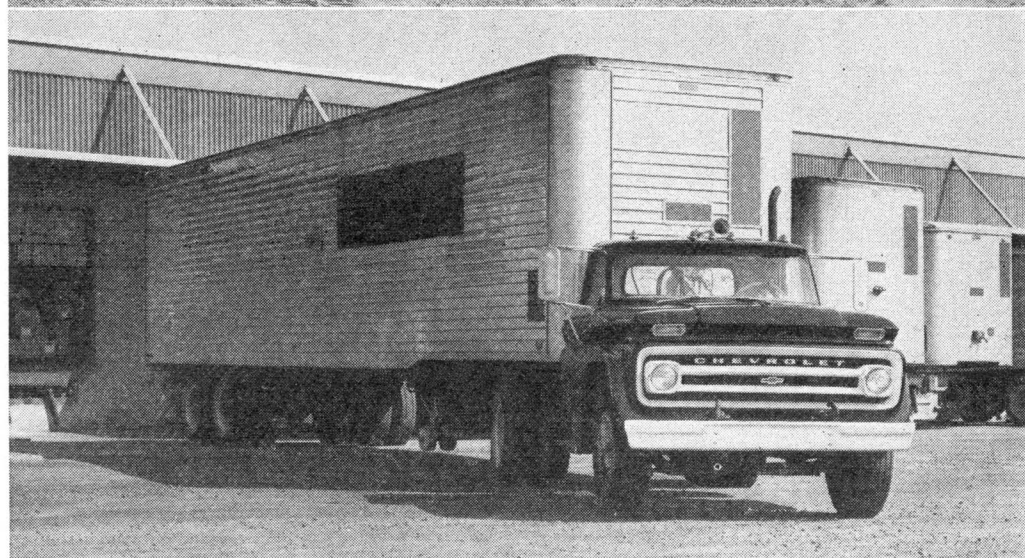


CHEVROLET workpower

Big dual-drive tandems carry ratings up to 45,000 lbs. GVW. Conventional models (as illustrated) come with either V8 gasoline power or V6 diesel power. Short cab models (93-inch BBC) are offered with V6 diesel engines. For lower tonnage work (up to 30,000 lbs. GVW), there's a broad selection of trailing-axle tandems with either gasoline or diesel power.



Conventional cab models are the most economical tractor types offered. They're available with GCW ratings as high as 51,000 lbs., and with either gasoline or diesel power. You can have one factory-equipped with tractor-trailer air brake connections, rear axle capacity up to 23,000 lbs. and either 5-speed or 8-speed transmission.



Short tilt cab models—just 72 inches from bumper to back of cab—offer the most in maneuverability and load space per foot of overall length. Set-back front axle improves front-rear axle loading for greater efficiency. Highly desirable cab type for tractor applications as well as a wide variety of truck bodies.



CAN DO YOUR BIG TRUCK JOB!

With the biggest line of big trucks in Chevrolet history, you can be sure to find one that's right for your kind of work. Take a look at Chevrolet versatility, and learn how you can profit from Chevrolet economy!

A lot has happened to our line of big trucks in the past few years. GVW ratings are up, choice of engines has increased tremendously and selection of chassis components is bigger than ever.

GVW ratings now go up to 32,000 lbs. for single-rear-axle trucks, to 45,000 lbs. for tandems. In every weight class there's a choice of three cab types—conventional, low-cab-forward and tilt cab. In nearly every category you can select either gasoline or diesel power. And the diesel power plants are offered in both 2-cycle and 4-cycle designs!

With such a broad choice of trucks, and an even broader choice of equipment, there's hardly a truck job left that doesn't match one of our Chevies to a "T". Talk it over with your Chevrolet dealer. He can show you the right truck for *your* big truck job. . . . Chevrolet Division of General Motors, Detroit, Mich.



Low-cab-forward units, with a foot less cab length than conventional models, give added load space on a given wheelbase. Maneuverability is better, too, and the short hood improves driver visibility for extra safety. Short cab design gives an excellent combination of economy and efficiency for both tractor and truck applications.



Conventional cab trucks are the most popular for a wide range of jobs. They're available with either gasoline or diesel power, and in a range of wheelbases to accommodate bodies up to 20 feet long. GVW ratings up to 32,000 pounds.

**THE
LONG STRONG
LINE**

