

# CHEVROLET workpower



**FLEETSIDE PICKUP** in background is one of 18 versatile Chevrolet pickup models. Features include non-slip wood floor planking, steel skid strips and grain-tight tailgate with anti-rattle latches.

**PLATFORM TRUCK** with special cattle racks is one of a full range of light-, medium- and heavy-duty chassis. Platforms are of select wood planking with full-length steel skid strips and wraparound steel rub rail.

## carries a lot of weight!

Carrying big payloads is an old story with men who use Chevy trucks—but it's only half the story.

Chevros do their jobs economically—give good gas mileage, low maintenance costs, high resale value. They also do their jobs with old-fashioned dependability. They're the kind you can rely on in all kinds of weather, day in, day out. They've got the Workpower to get jobs done.

Big Chevies have variable-rate leaf-spring suspensions, a choice of three cab types—conventional, low-cab-forward, tilt—plus a full range of big gasoline or diesel power plants. Husky trailing-axle and dual-drive tandems are offered to handle the biggest load-carrying jobs.

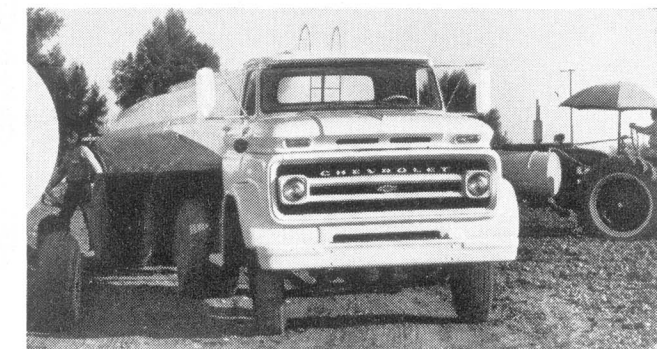
Popular light-duty Chevies feature coil-spring suspensions, self-adjusting brakes, roomy cabs and a tough build from the ground up. They're famous for the easiest ride in any line of trucks, and you can get them in types for every job—pickups, panels, Carryalls, stakes, chassis-cabs. And for hard off-road work there's a whole range of 4-wheel-drive models, too.

Chevrolet trucks are ruggedly built to carry a lot of weight and carry it easily. The bigger your job, the more you need Chevrolet Workpower.

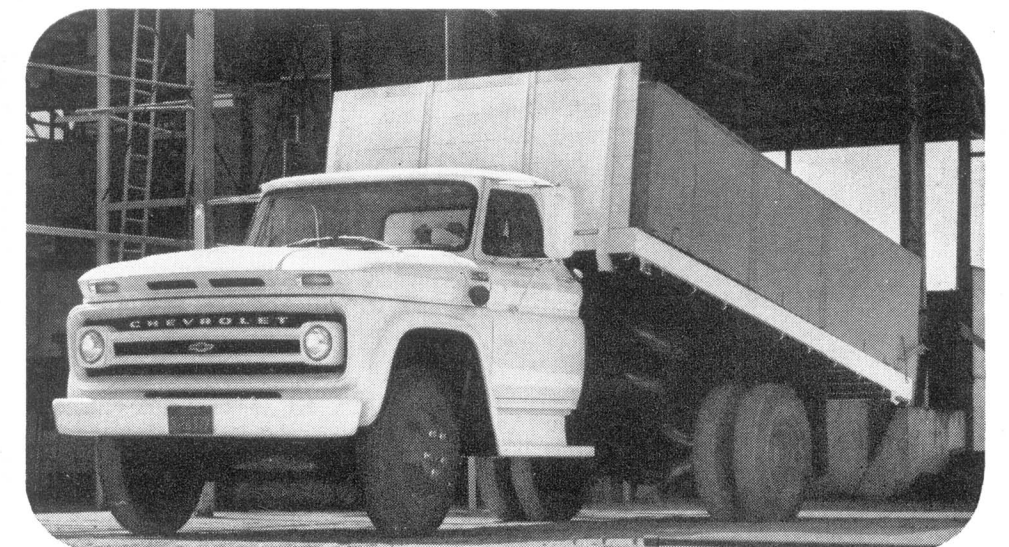
But don't take our word for how good a Chevy truck really is. Talk to a man who owns one. There are lots of them around! Then see your Chevrolet dealer. . . . Chevrolet Division of General Motors, Detroit, Michigan.



**TILT CAB** models are only 72 inches from bumper to back of cab to keep overall length at a minimum. Cab tilts forward for easy maintenance access.



**LOW-CAB-FORWARD** models have cabs a foot shorter than conventional models making them well suited to a wide variety of bodies and for tractors up to 51,000-lb. GCW. High cab improves driver visibility, and shorter wheelbase gives added maneuverability.



**CONVENTIONAL CAB** models are the most popular and economical chassis-cab configuration. Available in a full range of light-, medium- and heavy-duty models.



**THE LONG STRONG  
LINE FOR '65**