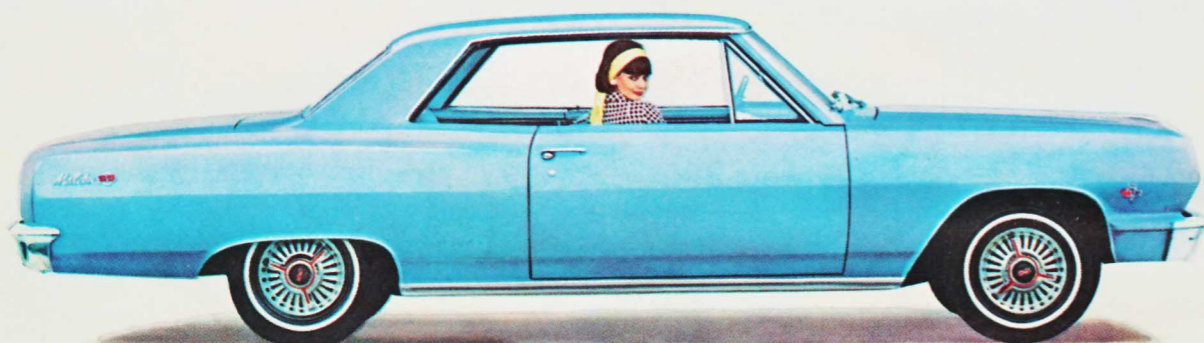




'65 Chevrolet  
Impala SS Coupe



'65 Chevelle  
Malibu SS Coupe



'65 Corvair  
Corsa Sport Coupe



'65 Chevy II  
Nova SS Coupe

## Let Chevrolet put you in beautiful shape for '65

**Now, a Chevrolet that makes everything over, under and around you beautifully different. A completely new Corvair with its first big change in five years. A Chevelle that doesn't hold back on anything but cost. And a Chevy II that's turned into the most powerful tightwad in town!**

For 1965, the big luxurious Chevrolet could almost get by on looks alone. But that's far from all that's new. It's longer, lower, roomier, heavier, more luxurious than any Chevrolet before.

Completely new (need we tell you?) from that sleek Impala Super Sport Coupe roof line and curved side windows all the way down to the Jet-smooth suspension. And that makes even the lowest priced Chevrolet feel for all the world like a luxurious car. Which, indeed, it is.

More expensive looking outside, richer looking inside, more shoulder room, more leg room up front — all in all, we think it's the *best* Chevrolet we've ever built.

### '65 Corvair

As you can see, Corvair's got all kinds of advanced ideas.

And those new ideas don't stop with Corvair's sleek, low, racy looks. Inside, there's more shoulder room. More comfort. The effortless han-

dling only its rear engine and new independent suspension can give. All wrapped up in seven models, including the Monza, 500 and brand-new top-of-the-line Corsa series.

New performance, too, from Corvair's air-cooled Six — up to 180 hp that you can order in the new Corsa Sport Coupe or Convertible. Just wait till the ones who always wait till next year see this!

### '65 Chevelle

There are enough changes in the '65 Chevelle to make it, too, feel like another whole new car from Chevrolet. New ride, new style, and an engine that will make *you* feel young again — a 300-hp V8 engine that you can order, the top of five engine choices for 1965.

And its smoother ride and extra body insulation make things as quiet for you as the day the kids went back to school.

Twelve youthfully new Chevelles to pick from. Come in. Find the one

that fits your needs best. Drive it. Buy it. We think you'll be as happy about it as we are.

### '65 Chevy II

Our economy is on the upswing! For '65, Chevy II has a dressed-up front, back, interior and a smart new roof on sedans. Plus two new V8's available: a 250-hp and a 300-hp.

Underlying it, though, are those wonderful things that have made Chevy II such a tightwad these past years. A battery-saving Delcotron generator. Self-adjusting brakes. Rust-resisting rocker panels.

Let your Chevrolet dealer show you how the 1965 Chevy II's turned into the most exciting tightwad in town. . . . Chevrolet Division of General Motors, Detroit, Michigan.

