

Showdown at Sebring: March 27

Place: Sebring, Florida.

Time: Starts 10 AM Saturday, March 27; ends 10 PM.

Winner: Car that has covered greatest distance at end of 12 hours.

Length of Course: 5.2 miles (one lap). Winning car usually travels over 200 laps and over 1000 miles during 12 hours of the race.

Number of cars entered: 65.

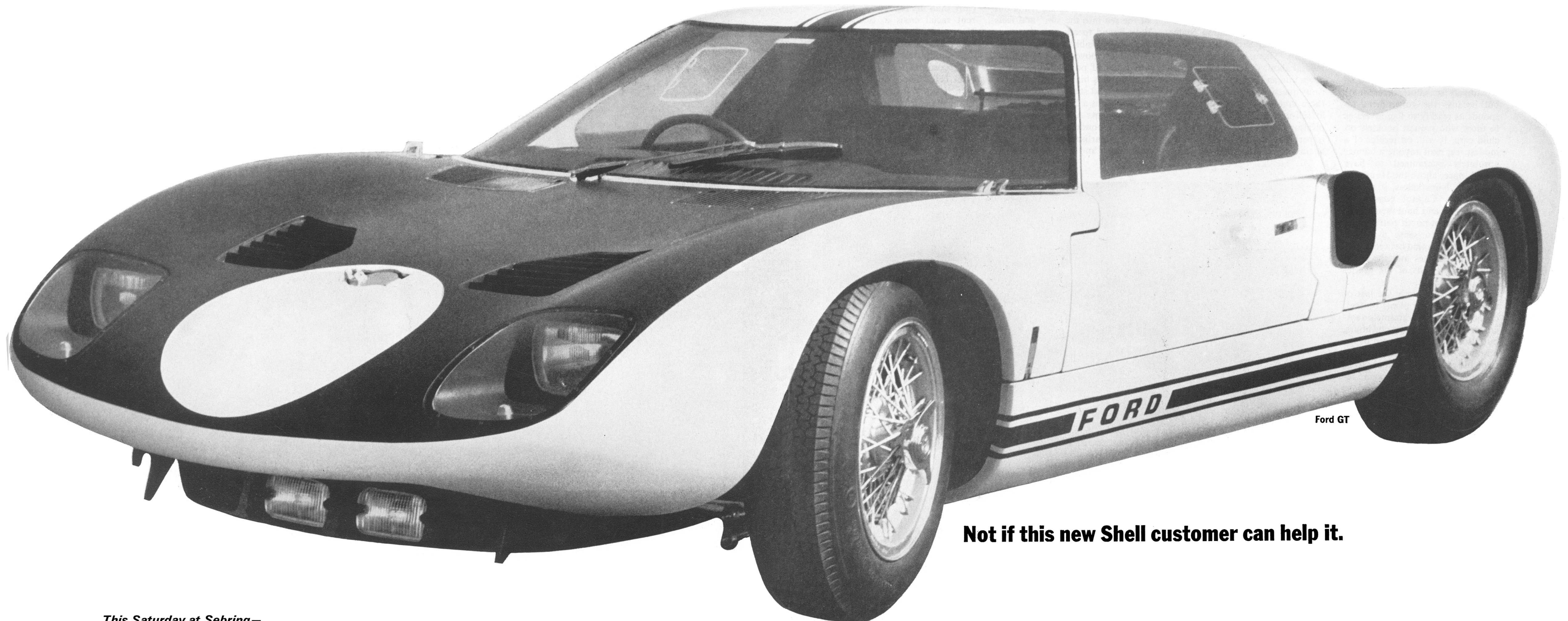
Brand of motor oil used: Choice of team.

Brand of gasoline used: Choice of team.

Favorite: Ferrari (will use Super Shell Gasoline and Shell Motor Oil).

New American Challenger: Ford GT (will use Super Shell Gasoline and Shell Motor Oil).

Can this old Shell customer win an unprecedented 5th straight Sebring victory?



Not if this new Shell customer can help it.

This Saturday at Sebring—

The Italian champion and the American challenger have both chosen Shell for their cars—above all other gasolines and motor oils. Some facts about the arduous Sebring race will help you understand why.

THE Sebring race is a car-killer. 200 times around the remains of some World War II bomber strips. Over 1000 miles of exasperating turns, back-racking acceleration and sharp braking. 12 hours of constant gear-shifting.

It's a grueling test of cars and drivers—of motor oils and gasolines.

This year, Ferrari and Ford will both try to accomplish a miracle. Ferrari cars

will try to win for the fifth straight time. Ford, after less than one year of international racing, will try to win in their first appearance at Sebring.

With a choice of gasoline and motor oil, both Ferrari and Ford have chosen to run on Super Shell Gasoline and Shell Motor Oil. Says Ferrari:

"My loyalty to Shell springs from my experience first as a racing driver, then

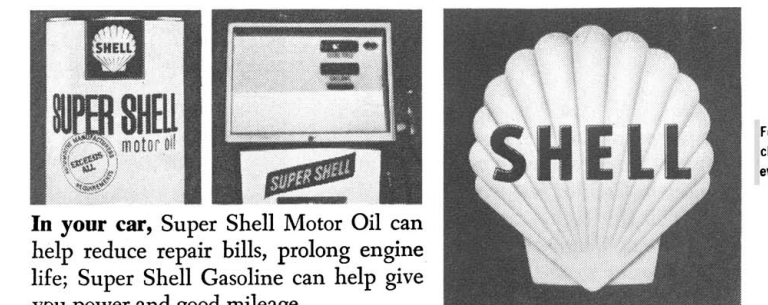
as director of the Ferrari racing team, and finally as a car manufacturer.

"Fourteen world championships have resulted from this happy association with Shell."

When it comes to gasoline, Ferrari and Ford both demand four things: 1. good mileage to hold down pit stops for refueling, 2. instant firing after pit stops to save precious seconds, 3. power to

accelerate to speeds of over 170 miles an hour, and 4. resistance to high-speed knock which can damage a piston.

Both specify Super Shell for their international racing cars. Not a special racing fuel. Straight "pump" gasoline—exactly the way *you* get it at Shell stations. Try a tankful next time you fill up and see if *your* car doesn't run better, too.



In your car, Super Shell Motor Oil can help reduce repair bills, prolong engine life; Super Shell Gasoline can help give you power and good mileage.

For longer engine life, change your oil at least every 60 days.