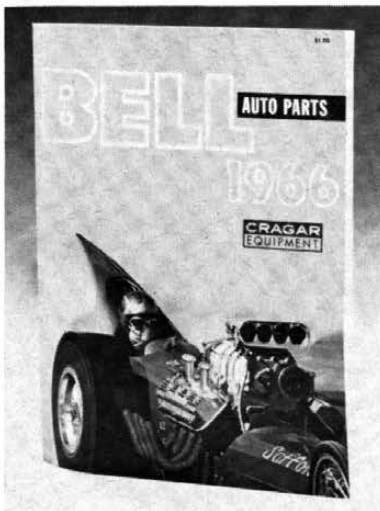
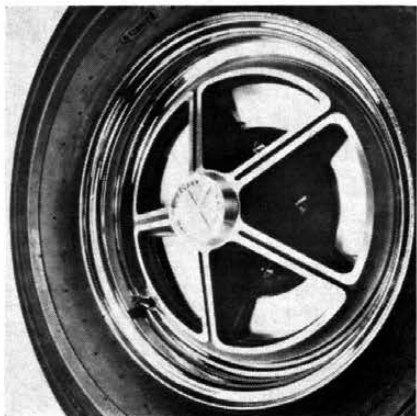


MOTORMART



TASTY TOME

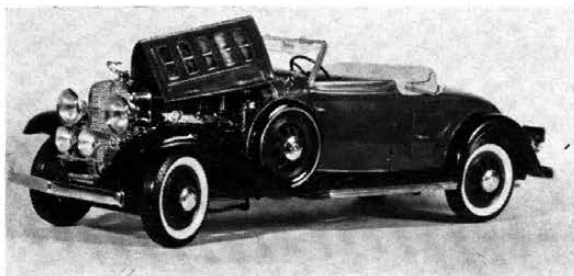
A colorfully covered clever compilation of components is Bell's 1966 catalog. The automotive enthusiast, if he encloses \$1 in an envelope addressed to Bell Auto Parts Inc., Dept. CL-1, 3663 E. Gage Ave., Bell 49, Calif., will receive by return mail 68 pages of speed equipment listings, completely indexed and very readable.

MAGSTARTLING

In 38 states and Canada, there now are dealers selling Kelsey-Hayes MAGStar 1 wheels, striking as well as cooling to brake drums. Prices vary, with \$42.45 quoted for a popular 14 x 6 size. Among dealers are Motor Rim & Wheel Service, Dept. CL-1, 2860-70 E. Pico Blvd., Los Angeles, Calif., 90023; Stone Wheel Inc., 4240 W. 40th St., Chicago, Ill., 60632; and Wheels Inc., 6 Interstate Ave., Albany, N.Y., 12205.

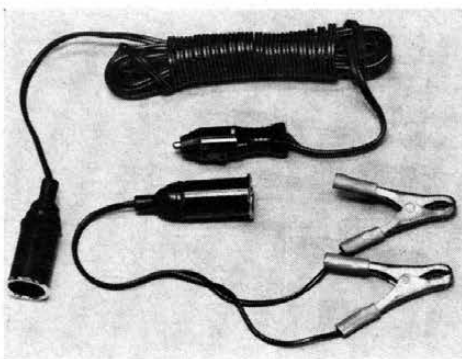
DEMICLASSIC

Jo-Han Models, Dept. CL-1, 17255 Moran Ave., Detroit, Mich., introduces a 1/25 scale Cadillac V-16 Fleetwood cabriolet, complete with sidemount spares and golf bag doors, at \$1.98 per kit. Among colored and chromed plastic components are steerable wheels, removable top, whitewall tires and a detailed engine.



CAMPER CLAMPER

Two new items of interest to the woody minded from E.C.F. Electronics Inc., Dept. CL-1, Zero North 748 Peter Rd., Wheaton, Ill., 60187, are a 20-ft. extension cord and a battery post adapter. At \$2.95 each, the units make power available for remote operation of automotive accessories.

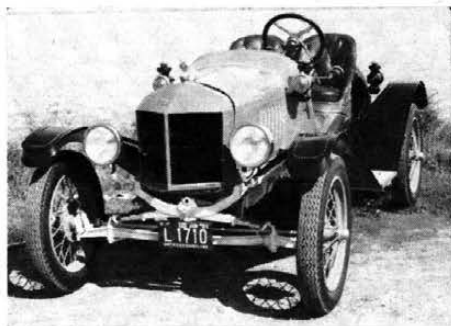
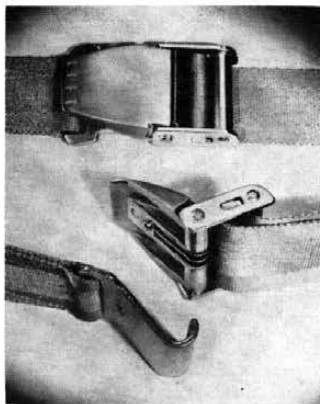


STICKS AND BONDS

Thermogrip, an electric paste pistol, fires slugs of polyethylene adhesive which are reduced to quick-flowing, easily applied glue by the 12-oz. gun's heating element. The glue dries in 60 sec. for a permanent bond, effective on a wide variety of materials. The gun, at \$7.95, is marketed by the B. B. Chemical Division, United Shoe Machinery Corp., Dept. CL-1, 140 Federal St., Boston, Mass., 02107.

MAGNETRACTION

Pioneer National Corp., Dept. CL-1, 113-15 N. Rogers St., Waxahachie, Tex., 75165, is producing a new type of seat belt, the Pioneer/Magnetic. At \$9.95 retail, the magnetic latch belt meets federal and SAE standards. It is said to provide 50 times more gripping surface than less exotic belt fasteners, but releases easily.



SPEEDSTORATION

Model T Speedster buffs—with or without a T chassis on which to build—will find Schulze Restoration Center, Dept. CL-1, 2133 S. Kinnickinnic Ave., Milwaukee 7, Wisc., is the place to shop. Components and fender kits, all steel, no fiberglass, or a complete Speedster in mint condition can be supplied by Schulze. Prices and details may be obtained for \$2.