

THE TRUTH BEHIND CHEVY'S DRAG RACING

DRAG RACING'S COMPLETE MAGAZINE

CAR CRAFT

CAR CRAFT

WINTER DRAGS COVERAGE

Double Drag Test:

428 CJ MERCURY COUGAR
340 DODGE DART SWINGER

50¢ UK 4'3 Sweden KR. 395 Inkl. moms
APRIL 1969

FOMOCO

— Ford's Super Drag Clinics Are Here!
— "Boss" Super Stylist: Larry Shinoda

MOPAR

— Ramchargers' New Hemi A/Stock
— STP-Plymouth Indy Engine Report

GM

— TRW-Chevy Budget \$\$ Stokers
— Build a \$1000 Olds' Record Holder



AMC

— First Report: Hurst's SC/Rambler
— 14-Second Stocker for under \$3000!



Big Bad Javelin

Optional Big Bad Orange, Big Bad Blue or Big Bad Green paint—includes painted front and rear bumpers.

Optional Adjust-O-Tilt steering wheel.

Optional Twin-Grip differential.

Optional dual exhausts. (Standard with 390 engine.)

Optional roof spoiler.

Optional "Go" Package. (Includes 343 or 390 V-8, dual exhausts, power disc brakes, E70 X 14 Red Line tires, handling package and black fiberglass hood scoops.)

Optional 140 mph speedometer and big faced tach.



Optional "C" rally stripe.

Optional exhaust-style trim panels.

Optional E70 X 14 Goodyear Polyglas™ Red Line tires.

Optional power disc brakes.

Optional mag-style wheels.

Optional AMX 390 cu. in. engine. (High-performance dealer installed AM parts plus "Isky," Edelbrock, Offenhauser and Doug's Headers parts available for this engine, if you want to modify it.)

Optional air-conditioning. Optional 4-speed close-ratio gear box with Hurst shifter.

Optional Airless Spare.

Optional 8-track stereo tape with AM radio.

Optional handling package. (Includes heavy-duty springs and shocks plus beefed up anti-sway bar.)

American Motors



We'll take on any other two cars in the magazine.

Camaro SS, plus Rally Sport.
Black grille.
Undercover headlights with built-in water jets to clean them.
Up to 325 hp on order.
Sport stripes.
Special hood.
Power disc brakes.
Seven-inch rims and wide oval tires made very obvious with raised white lettering.
Head restraints.
New Hurst-linkage 4-speed available.

Can't be driven when steering column is locked.
Usually seen in the company of people who can tell the real article from an imitation.
Known as "The Hugger."
Kin to Corvette.
Corvette, 'Vette, Stingray and other sassy names.
Unusually powerful looking hood.
Morocco-grain vinyl on instrument panel.
New map pockets.

Wider 8-inch wheels.
New assist grips on the doors.
Six bucket seat colors.
New concealed door handles.
Built-in headlight washers.
The driver of this car is always ready with 350 cubic inches of new standard V8.
Other cars, if we were you, we'd drive on the other side of the street.
Way on the other side.



Putting you first, keeps us first.

ISKY

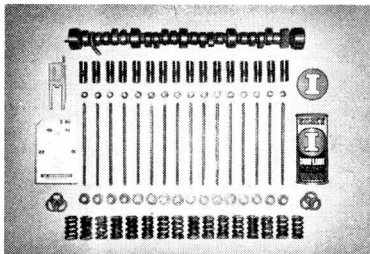
THE NAME THAT IS
SYNONYMOUS WITH
HOT RODDING



THE ISKY CAR OF THE MONTH

This month's winner is David Larson of Oregon, Wisconsin. He sent this letter along with a photo of his super-sano Chevy: "I wish to inform you of the success my brothers and I have had through the use of Isky cams. Last year when I had my '62 on the street it tore up the competition with a Z-60 Isky. Since then I purchased a tow car so the '62 is strictly for the strip. I added a cross ram, and an Isky 550 Super Le Gerra cam and kit. Then I was drafted, so had to wait until my first leave to try it out. The first day out I took "Little Gas Eliminator", raising the wheels in the first three gears. The 550 really comes on quick and keeps right on going to give the 283 cu in. the revs it takes to win. I shift at 8,000 and it really comes on quick with a 5.38."

AN ISKY CAM FOR \$55!



Iskenderian offers a full range of cams for the 283-327-350 Chevrolet engines. From the street driveable 280° hydraulic and RPM-300 flat tappet (priced at only \$55), to the all-out competition 555 Invincible hardface and roller cams. These Isky grinds were developed after extensive testing on the Iskenderian dynamometer. For complete information. Send 10c for eight page Chevrolet engine cam spec sheet.

NEW ISKY CATALOG



More pages, more data... the largest catalog in the industry. Featuring the world's largest stock of racing cams and related speed equipment.

\$1.00 inc. large decal asst.

ED ISKENDERIAN RACING CAMS

16020 SOUTH BROADWAY ■ GARDENA, CALIF. 90247

Dept. CC

DRAG RACING'S COMPLETE MAGAZINE CAR CRAFT



DICK DAY
Publisher
JOHN RAFFA
Editor

CAROL DE MARINIS
Art Director
MARIE DONNELL
Managing Editor

TERRY COOK
Feature Editor
BOB SWAIM
Associate Editor

A. B. SHUMAN
Technical Editor
JERRY MALLICOAT
Associate Editor

LISA ANDERSON
Production
LYNNE FENIMORE
Editorial Assistant

FEATURES

OPEL SAUCE <i>Pirafalo-Frederick A/Gasser</i>	16
LARRY SHINODA <i>Personality Profile</i>	20
STP-PLYMOUTH "STOCKERS" AT INDY.....	26
9th ANNUAL NHRA WINTERNATIONALS.....	28
EARLY OLDSMOBILE BUILDING TIPS.....	34
HEMI WHAMMY <i>By Terry Cook</i>	36
SWINGER DRAG TEST <i>Part III CC's Project Car At Pomona</i>	40
DRAG TEAMS FROM FORD <i>National Seminars To Tour Country</i>	42
THE TRUTH BEHIND CHEVY'S RACING <i>Are They Or Aren't They?</i> ..	44
TRACKIN' THE CAT <i>Cougar 428 CJ Drag Test</i>	46
A SUBSTITUTE FOR CUBIC MONEY <i>By A. B. Shuman</i>	48
AHRA WINTER NATIONALS <i>By Bob Swaim</i>	50
IMAGE SC/RAMBLER <i>Hurst-AM's New Muscle-bound Rambler</i>	52
SACHS APPEAL <i>Bike Test By Bob Braverman</i>	56

DEPARTMENTS

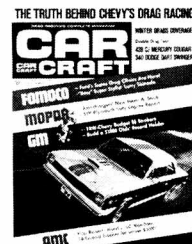
LETTERS.....	9	BUGGIN' OUT.....	58
STRAIGHT SCOOP.....	12	CC/SHOPS.....	102

COVER

"Musclecar" from American! Here comes AMC's newest entry in the performance sweepstakes, the Hurst-built SC/Rambler. It features a price of under \$3000, including a whole handful of racing "goodies." Photo by Bob Swaim

CC ACTION SHOWCASE

The Funny Car rank's newest super-star tag belongs to Chicago's Don Schumacher, current national e.t. record holder. His "Cuda runs steady low sevens. Photo/Jim Kelly



Robert E. PetersenPresident	F. R. Waingrow ..Exec. Vice-President
Derek CarrollAdm. Vice-President	Albert H. IssacsPPC Art Director
Herbert Metcalf ...Circulation Director	Robert D'OlivoPhoto Director
Jack PrestonProduction Manager	Don MaxwellVice-Pres. of Finance
M. S. RawitschPurchasing Director	Spencer NilsonMarketing Director
Albert Michaelian ..Research Librarian	R. L. Dellinger Dir. of Communications

PETERSEN PUBLISHING CO., ADVERTISING OFFICES: CALIFORNIA, 8490 Sunset Blvd., Los Angeles 90069, 657-5100; MICHIGAN, 2208 Detroit Bank & Trust Bldg., Detroit 48226, 963-8040; ILLINOIS, 401 N. Michigan Ave., Suite 1444, Chicago 60611, 222-1920; OHIO, 1 Public Square, Suite 905, Cleveland 44113, 621-2006; NEW YORK, 770 Lexington Ave., New York 10021, 751-5260; MISSOURI, 34 N. Brentwood Blvd., Clayton 63105, 727-7220.

Car Craft Magazine, Copyright 1969 by Petersen Publishing Company. All Rights Reserved. Second class postage paid at Los Angeles, California and at additional mailing offices. Subscription rates: U.S. Possessions — 1 year \$5.00, 2 years \$9.00, 50c per copy. All others — 1 year \$6.00, 2 years \$11.00. Give six weeks notice for change of address. CONTRIBUTIONS: Should be mailed to 5959 Hollywood Blvd., Los Angeles 90028. They must be accompanied by return postage and we assume no responsibility for loss or damage thereto. Any material accepted is subject to such revision as is necessary in our sole discretion to meet the requirements of this publication. Upon acceptance, payment will be made at our current rate, which covers all author's and/or contributor's right, title, and interest in and to the material mailed including but not limited to photos, drawings, charts and designs, which shall be considered as text. The act of mailing a manuscript and/or material shall constitute an express warranty by the contributor that the material is original and in no way an infringement upon the rights of others. "POSTMASTER, please send form 3579 to CAR CRAFT MAGAZINE, Post Office Box 3291, Los Angeles, California 90028."