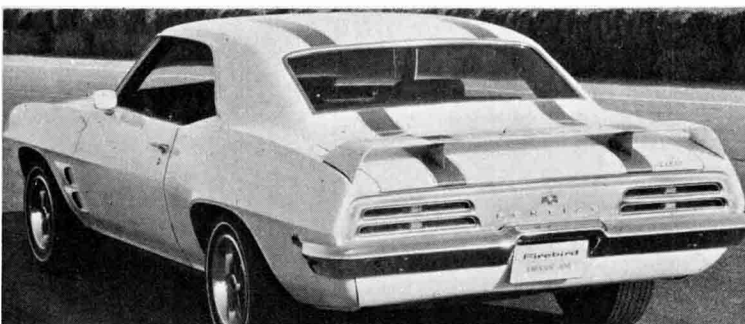


ONE FOR THE ROAD

Pontiac offers a streetable version of its Trans-Am Firebird road racer for the ponycar enthusiast who grooves on scoops, stripes and spoilers. The race model packs a new 300-inch-plus Traco-style dual-quad tunnel-port-engine, while its streetable twin relies on 400-inch power to get the job done!



Functional twin-scoop setup directs cool fresh air to the hungry 400 Ram Air mill.



Rear spoiler is non-functional at cruising speeds, but adds mucho imagine appeal.

THE TRANS AM By Pontiac

Quick Reference Specifications

ENGINE

Cylinders	8
Bore and Stroke	4.12 x 3.75
Displacement	400
Compression Ratio	10.75-to-1
Horsepower	335 @ 5000
Torque	430 @ 3400
Valves: Intake	2.11 inch
Exhaust	1.77 inch
Camshaft:	
Lift-(Stick.)	.414 intake .413 exhaust
Duration (Stick.)	288° intake 302° exhaust
Lift-(Auto)	.410 intake .413 exhaust
Duration (Auto)	273° intake 289° exhaust
Carburetion	Single Quadrajst
Exhaust system	Dual w/low-restriction muffler

DIFFERENTIAL

Ratio	3.55-to-1
-------	-----------

BRAKES

Type:	High-effort power; single piston disc front, drum rear
Dimensions:	
Front disc diam.	11 inch
Rear drum diam.	9.5 inch
Total swept area	350.9 square inches

TRANSMISSION

Type:	3-speed manual
Ratios: 1 st	2.42
2nd	1.61
3rd	1.00

SUSPENSION

Front	Heavy-duty coil
Rear	Heavy-duty multileaf
Stabilizer	1.00-inch diameter with high density bushings
Tires	F-70-14
Rims	7-inch wide
Steering gear	Type-High-effort variable ratio power
Ratio	16.1-12.4-to-1
Turning Circle	38.5 ft.
Turns of steering wheel lock to lock	2.5

DIMENSIONS

Wheelbase	108.1
Front track	60 inches
Rear track	60 inches
Overall height	49.6 inches
Overall width	73.9 inches
Overall length	191.1 inches
Shipping weight	approx. 3375 pounds
Test weight, pre-production car	approx. 3525
Crankcase capacity	5 quarts
Cooling system	18.6 quarts
Fuel tank	18.5 gallons