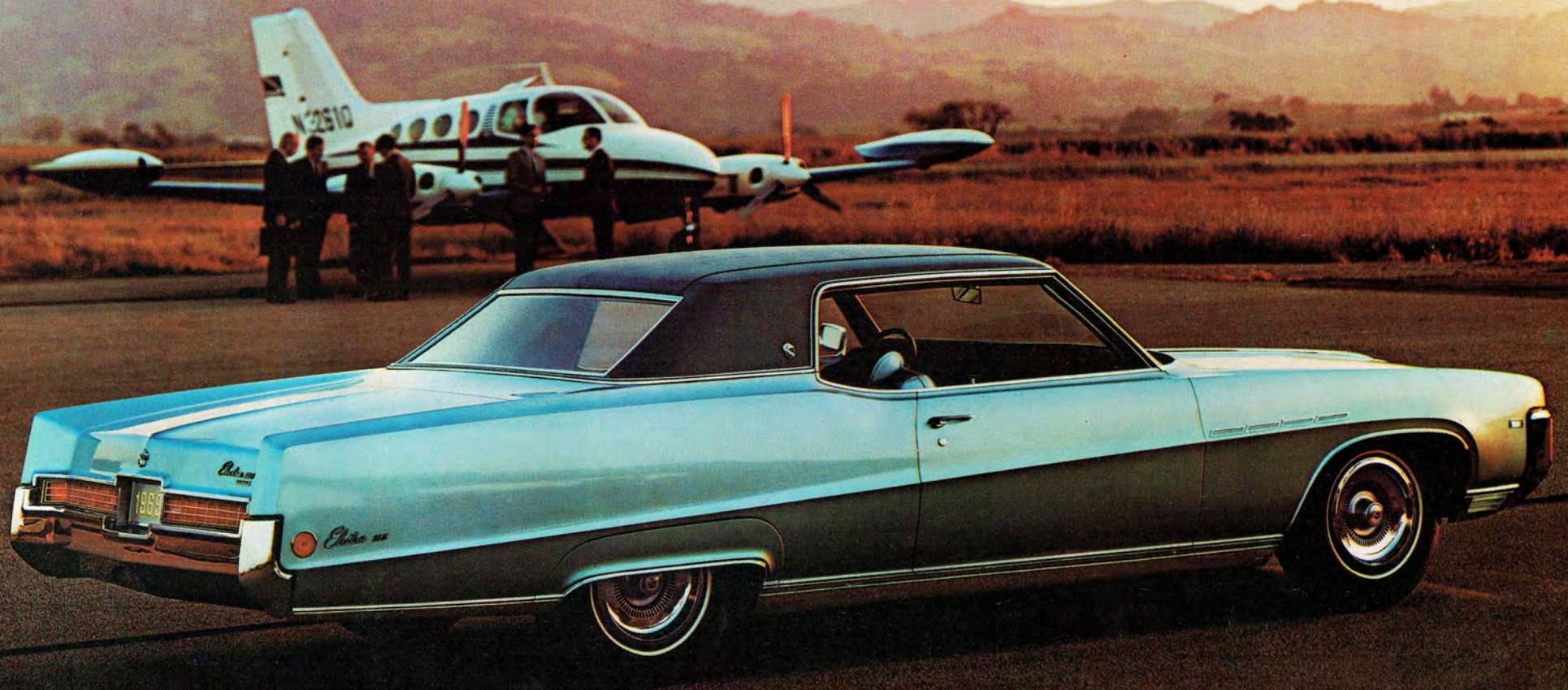


Buick 1969



See why Buick owners keep selling Buicks for us.





Brings a clean, fresh look to luxury car styling.
1969 Buick Electra 225 Sport Coupe



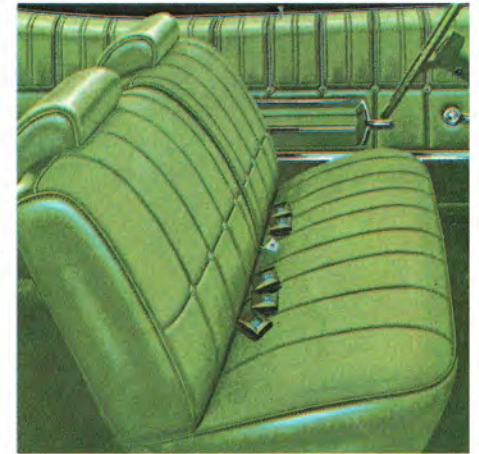
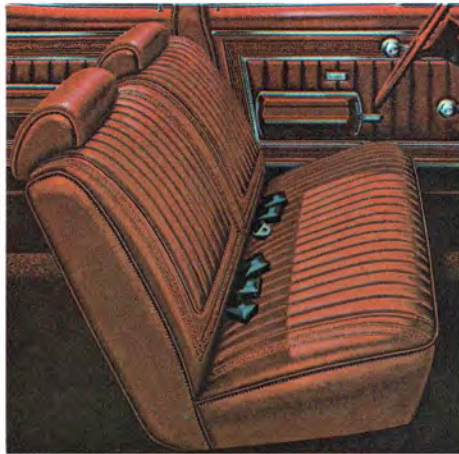
1969 Buick Interiors

Sit in the lavish lap of luxury



This is your element. Roomy, luxurious, easy-chair living. Every stitch of it laced to last.

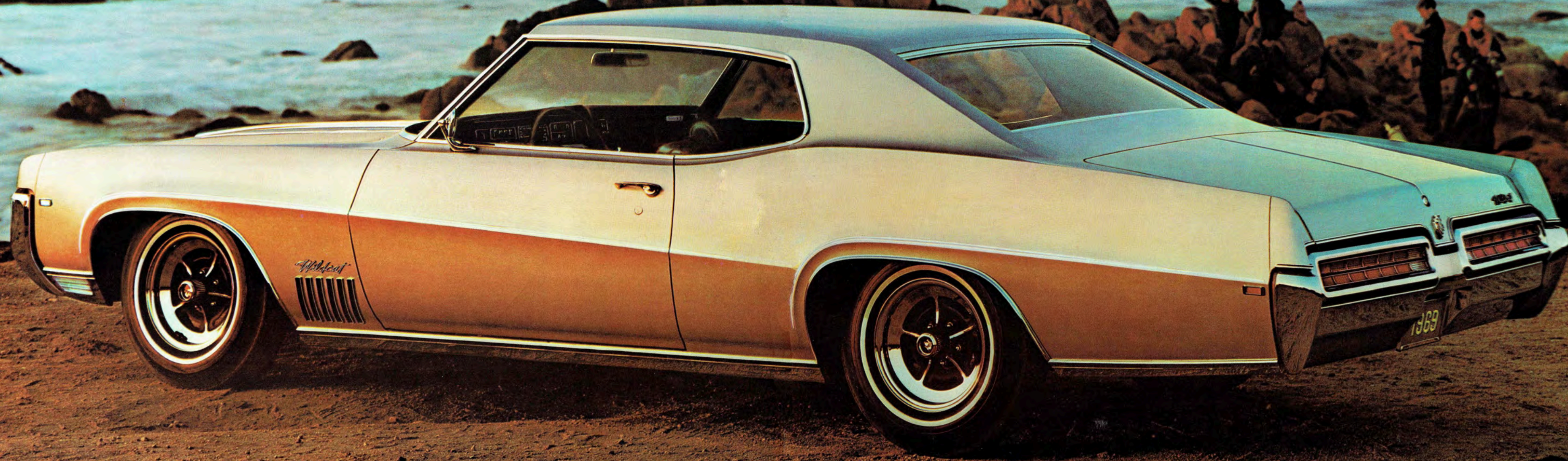
Elegantly beautiful combinations of radiant vinyl and rich cloths love to be looked at and touched. Cushions of foam padding feather the nest in all the right places. And at your feet, more creature comforts: durable, thick-pile carpeting in beautifully matched colors.



Buick completes the harmony with customized seating comfort in a wide array of seats. So if you lean towards the his-and-her convenience of the Electra 225 Custom's new, individually adjustable 60/40 seats . . . or the armchair comfort of a notch-back seat . . . or the svelte sportiness of strato bucket seats, just say so. Then take your choice of soft, leather-like vinyls or beautifully woven cloths in twinkling, tufted brocades, hard-wearing satin weaves, kid-resistant twills or cords.



Now — while you still have that elegant gleam in your eye, why not have a long talk with your mate.



Youngest and sportiest of all the big Buicks.
1969 Buick Wildcat Custom Sport Coupe

Roomy, rugged and loaded with comfort.
1969 Buick Sportwagon





Beautiful beginning for a life of excitement.
1969 Buick Skylark Custom Sport Coupe



Perfect blend of action-machine and luxury car.
GS-350 and GS-400 Convertible

1969 Buick Engines . . . All Business!

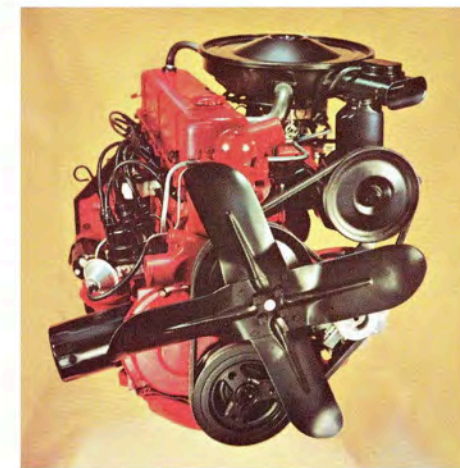
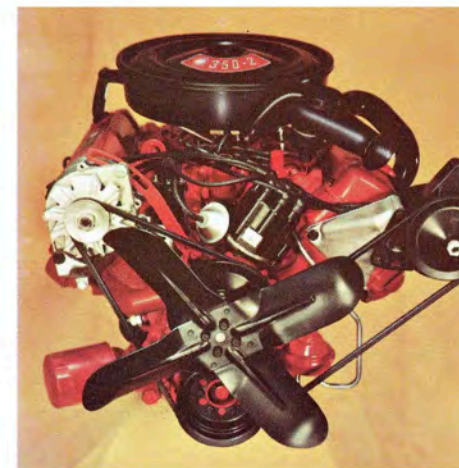
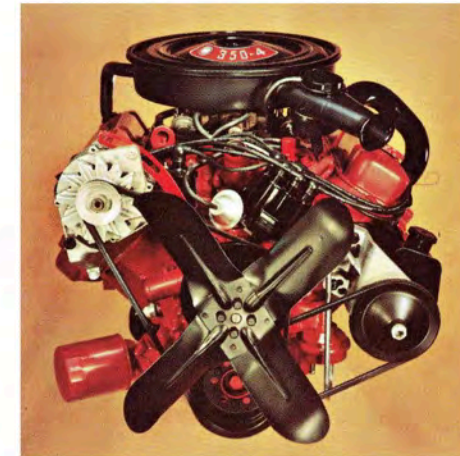
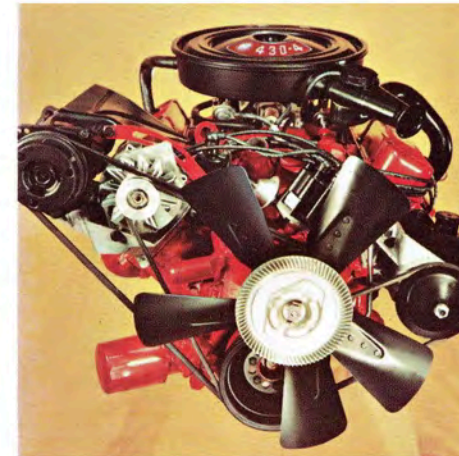
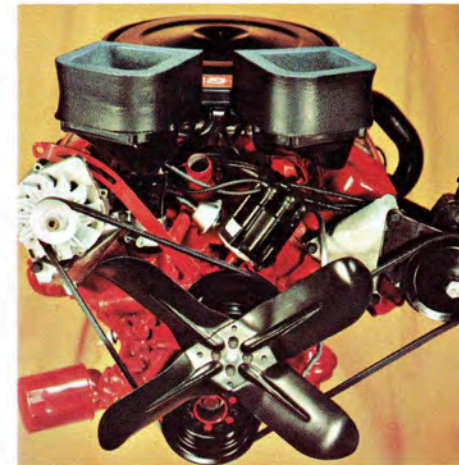
GS-400, with its standard 400-4 V-8 engine, is very severe on competitors. 400 cubic inches. 4-barrel Quadrajel carburetion. Delivers 340 horsepower, 440 pounds-foot of torque. All the markings of a winner.

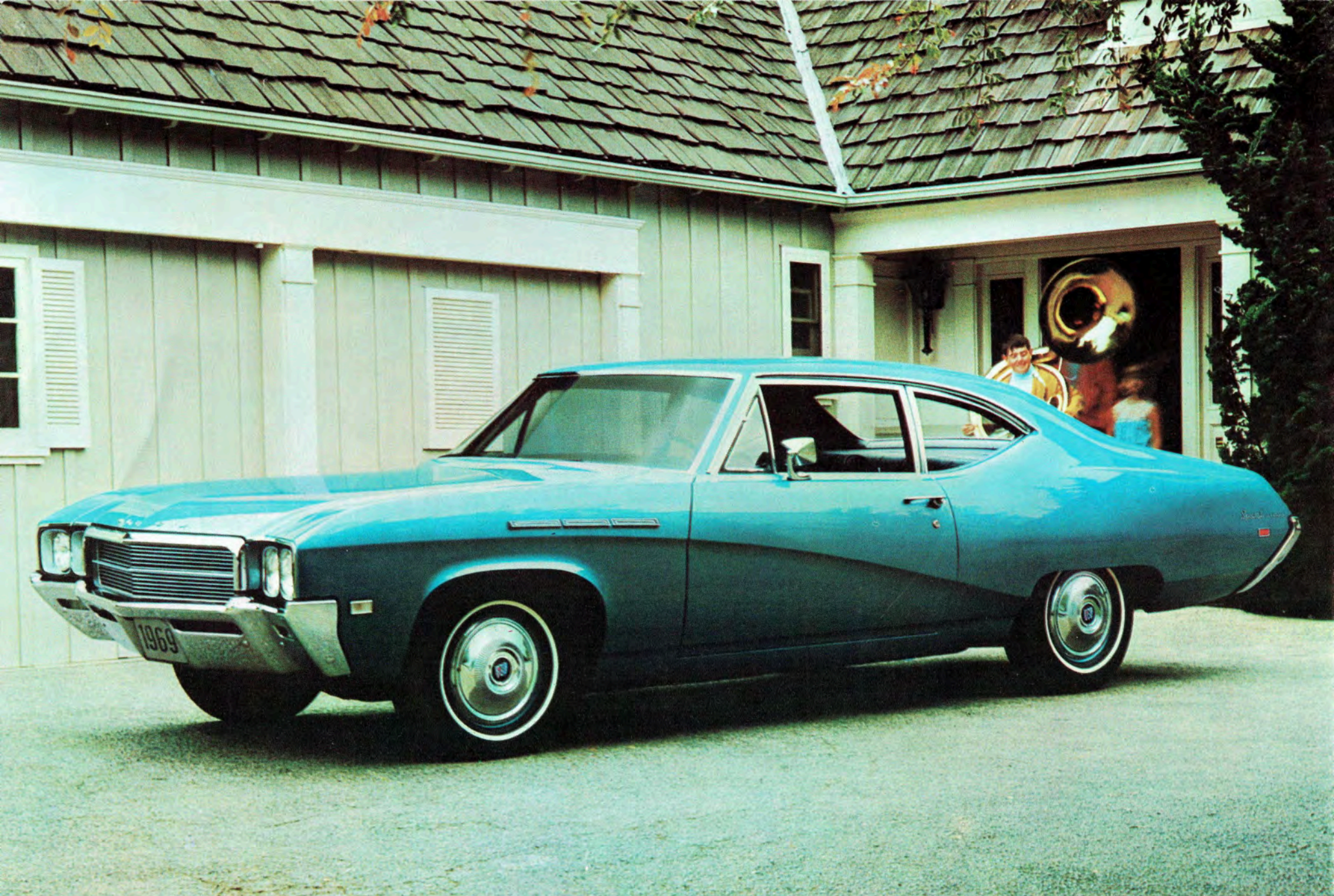
350-4 V-8 is the standard 4-barrel for the GS-350. 350 cubic inches whipping up a torque of 375 pounds-foot to 280 horsepower. Out back . . . twin exhausts.

The 350-2 V-8 engine delivers 230 horsepower economically sipping regular fuel. 350 cubic inches of displacement emphasize very dependable Wildcat performance. Standard powerhouse for Special Deluxe Station Wagons, all Skylark Custom models, Sportwagon and LeSabre.

Buick's largest and most powerful 430-4 V-8 engine gives well-bred assurance to all Wildcats, Electra 225's and Rivieras. Horsepower is an impressive 360. 4-barrel Quadrajel carburetion. 475 pounds-foot of torque. Title to this one entitles you to deferential performance.

Fireball 250-1. Six cylinders and 250 cubic inches delivering 235 pounds-foot of torque. Adds up to 155 horsepower and butter-smooth dependability. If you're one to keep books on performance and economy, this one balances them beautifully. Standard for all Skylark models, Special Deluxe Coupe and Sedan.





Sports its fair share of Buick prestige, value and performance.
1969 Buick Special Deluxe 2-door Coupe



Now, wouldn't you really rather have a 1969 Buick?

LITHO IN U.S.A.



Buick Motor Division, General Motors Corporation, reserves the right to make changes at any time, without notice, in prices, colors, materials, equipment, specifications, and models and also to discontinue models.

Buick 1969



Buick Motor Division, General Motors Corporation.