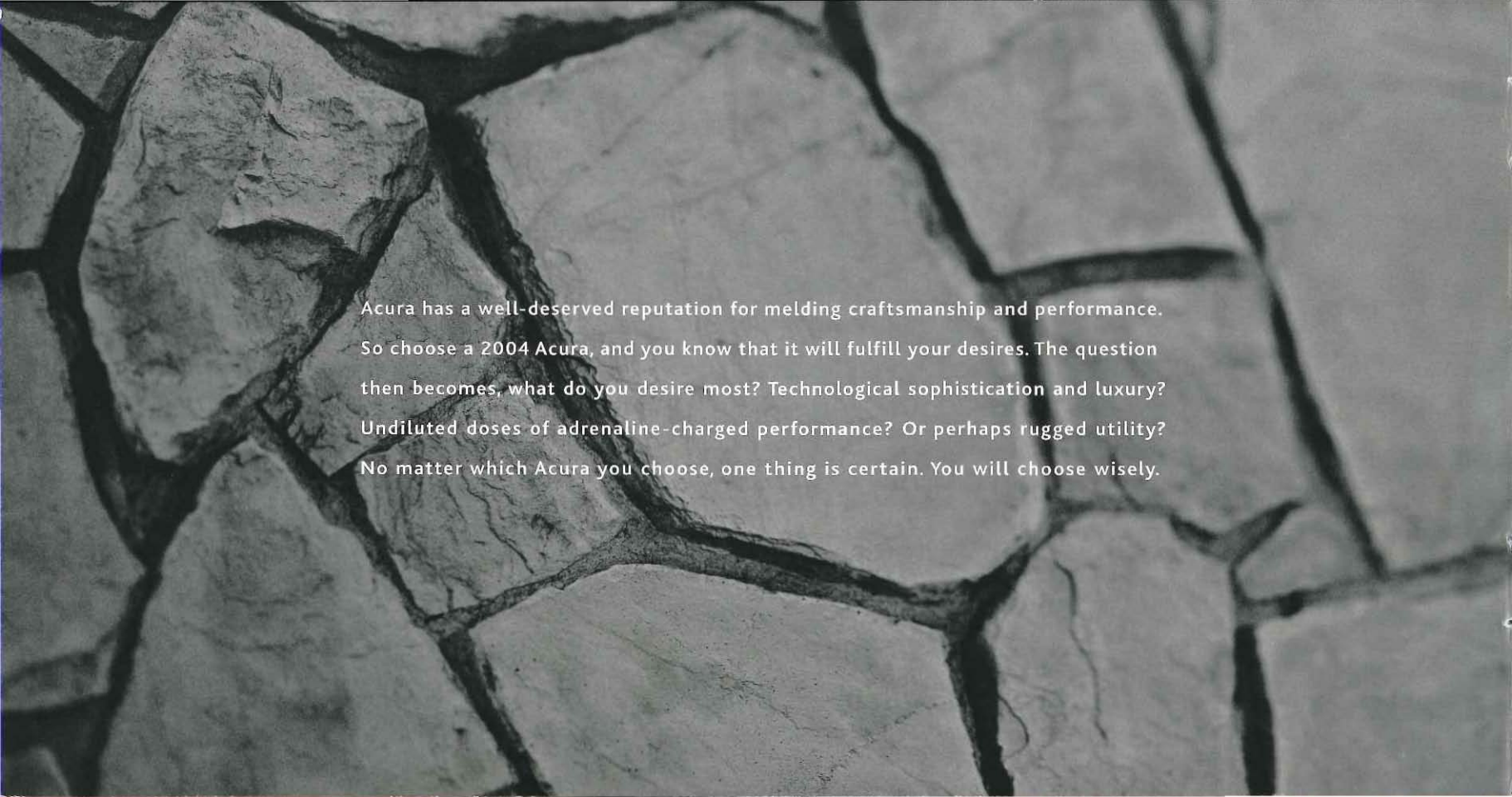
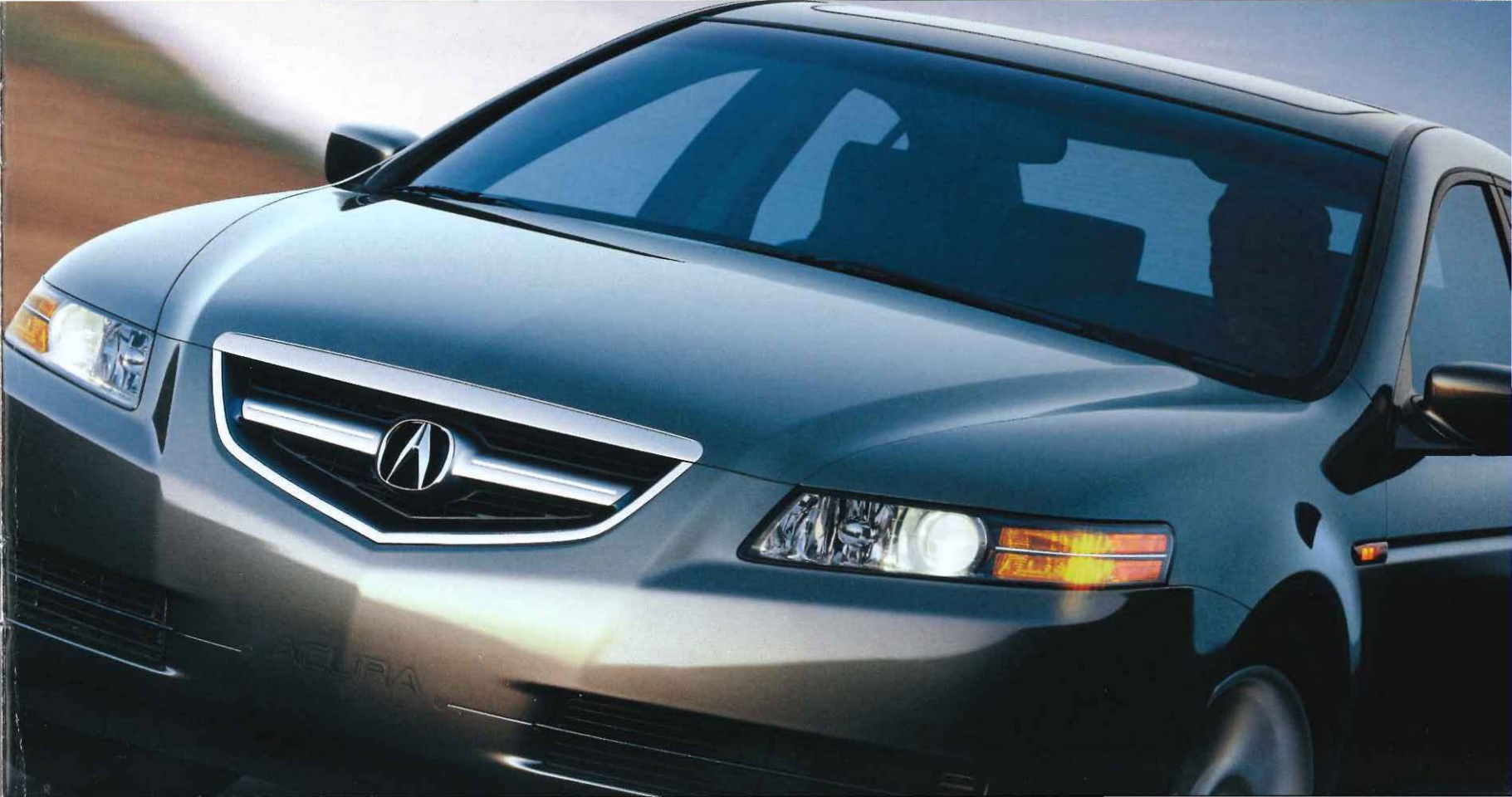


A scenic landscape featuring rolling hills under a dramatic, cloudy sky. The hills are covered in vibrant green grass and patches of yellow and orange flowers. A dark asphalt road with double yellow lines curves through the foreground, leading the eye into the distance. The overall mood is serene and picturesque.

2004 Acura Automobiles



Acura has a well-deserved reputation for melding craftsmanship and performance. So choose a 2004 Acura, and you know that it will fulfill your desires. The question then becomes, what do you desire most? Technological sophistication and luxury? Undiluted doses of adrenaline-charged performance? Or perhaps rugged utility? No matter which Acura you choose, one thing is certain. You will choose wisely.





3.5RL

Acura 3.5RL shown in Carbon Gray Pearl.

3.5RL Specifications

- 3.5-Liter, Aluminum-Alloy, 24-Valve, SOHC V-6
- Horsepower: 225 @ 5200 rpm
- Torque: 231 lbs-ft @ 2800 rpm
- 4-Speed Automatic Transmission with Grade Logic Control
- 4-Wheel Independent Double-Wishbone Suspension
- Vehicle Stability Assist (VSA®) with Traction Control
- 4-Wheel Disc Brakes with ABS
- 16-Inch Aluminum-Alloy Wheels with P225/55 R16 Tires
- Dual Front Airbags® and Front Side Airbags
- Driver's 8-Way Power Seat with 2-Position Memory and Power Lumbar Support
- Heated Front Seats
- Automatic Climate Control System
- Acura/Bose® Music System with AM/FM Stereo Cassette and 6-Disc In-Dash CD Changer
- XM® Satellite Radio¹
- Acura Navigation System with Voice Recognition™²
- OnStar® Service³
- Power Windows with Driver's Auto-Down/Up with Auto-Reverse
- Burlled Camphor Wood Trim
- Leather-Trimmed Seats

*Acura reminds you and your passengers to fasten your seat belts.

The 2004 Acura 3.5RL®, our flagship sedan, is nothing less than the ultimate expression of Acura's passion for creating luxurious cars that perform. Behind the wheel, enjoy a multitude of state-of-the-art amenities and indulge in the comforts of a handcrafted interior. Drive it, and discover impeccable road manners and the power of a 225-hp engine with a remarkable balance of strength and refinement.



Wrap Yourself in Leather and Warm Wood.

In addition to an array of advanced amenities, RL surrounds you in old-world luxury. Deeply bolstered seats are dressed in soft, fine-grain leather. And the rich, elegant burlled camphor wood trim is handcrafted by master artisans.

Listen to the Future of Radio.

First AM, then FM, and now, the power of XM. Standard on the Acura RL, XM Satellite Radio offers passengers more than 100 channels of audio entertainment, spanning many formats and genres, all delivered in crisp, digital stereo.



The Acura passion for high performance and stunning leaps of technology is given a brilliantly fresh voice with the all-new 2004 TL. Its arrestingly beautiful style leaves little doubt as to this machine's ability to scintillate. Its 270-hp engine and race-bred suspension deliver intense acceleration and road-gripping precision. And with its full complement of amenities, it reaches a higher form of performance.



Luxury Goes High-Tech.

The TL features a luxurious leather-trimmed cockpit with an array of advanced technology, like the world's first premium surround-sound system as standard equipment, XM Satellite Radio and an available navigation system.

An Engine That Thinks. Fast.

The technologically advanced 270-hp TL engine offers its driver brisk acceleration at all engine speeds. The wide power band is due in part to its dual-stage intake manifold with cold-air induction and a high-flow exhaust system.



TL Specifications

- 3.2-Liter, Aluminum-Alloy, 24-Valve, SOHC VTEC® V-6
- Horsepower: 270 @ 6200 rpm
- Torque: 238 lbs-ft @ 5000 rpm
- Drive-by-Wire Throttle System™
- 5-Speed Sequential SportShift™ or Close-Ratio 6-Speed Manual (6MT) with Limited-Slip Differential
- 4-Wheel Independent Double-Wishbone Suspension
- Vehicle Stability Assist (VSA) with Traction Control
- 4-Wheel Disc Brakes with ABS, Electronic Brake Distribution (EBD) and Brake Assist
- Brembo® High-Performance Front Brakes (6MT)
- 17-Inch, 5-Spoke Aluminum-Alloy Wheels with P235/45 R17 Tires
- Available High-Performance Tires* (6MT)
- Dual Front Airbags*, Front Side Airbags and Side Curtain Airbags
- Acura/ELS™ Premium 8-Speaker Surround Sound with 6-Disc CD, DVD-Audio and DTS® Changer, AM/FM Tuner and Dolby® Cassette
- XM Satellite Radio†
- HandsFreeLink™ Wireless Telephone Interface
- Maintenance Minder System
- Dual-Zone, Dual-Mode Automatic Climate Control System
- Available Acura Navigation System with Voice Recognition

*Acura reminds you and your passengers to fasten your seat belts.



TL

Acura TL shown in Satin Silver Metallic.



TSX

Acura TSX shown in Carbon Gray Pearl.

TSX Specifications

- 2.4-Liter, Aluminum-Alloy, 16-Valve, DOHC i-VTEC® Engine
- Horsepower: 200 @ 6800 rpm
- Torque: 166 lbs-ft @ 4500 rpm
- Drive-by-Wire Throttle System
- 5-Speed Sequential SportShift Automatic Transmission or Close-Ratio 6-Speed Manual Transmission with Magnesium Case
- 4-Wheel Independent Double-Wishbone Suspension
- Vehicle Stability Assist (VSA) with Traction Control
- 4-Wheel Disc Brakes with ABS
- 17-Inch Aluminum-Alloy Wheels with P215/50 R17 Tires
- Dual Front Airbags*, Front Side Airbags and Side Curtain Airbags
- Driver's 8-Way Power Seat with Adjustable Lumbar Support
- Dual-Zone Automatic Climate Control System
- Acura 360-Watt Premium Sound System with AM/FM Stereo, 6-Disc In-Dash CD Changer and 8 Speakers
- Leather-Trimmed Seats and Door Panels
- Tilt and Telescoping Steering Column
- Power Moonroof with Tilt Feature
- Xenon High-Intensity Discharge (HID) Headlights
- Available Acura Navigation System with Voice Recognition

*Acura reminds you and your passengers to fasten your seat belts.

New to the Acura line, the TSX™ is a high-powered celebration of craftsmanship, sophistication and performance. The good times start with an eager 200-hp i-VTEC powerplant and a corner-loving 4-wheel independent double-wishbone suspension. Inside, a leather-trimmed interior and details both large and small make for an exceptionally refined driving experience. And it's all rendered in a fresh, smart style.



Your Own Personal Empowerment Zone.

With dual-zone automatic climate control, you and your front passenger can dial in perfect comfort. The 360-watt audio system creates a powerful presence. And the Acura Navigation System with Voice Recognition is available.

Six Times the Fun.

With short, snappy throws and exceptionally precise action, the 6-speed shifter on the TSX feels like a surgical instrument. It operates a transmission developed specifically for this car and enclosed in a lightweight magnesium case.



The 2004 Acura RSX® is totally up front about performance. It's all right there. A low, ground-clenching stance. A wind-slicing shape and alloy wheels wrapped in wide, low-profile tires made for cornering. Underneath there's a racing-inspired suspension and a choice of two powerful engines bred to cover a lot of pavement in a little time. All this, combined with legendary Acura refinement and comfort.



It's All About Control.

Both RSX models have ergonomic controls that are easy to use and natural-feeling, high-tech metallic-faced gauges and an automatic climate control system. The Type-S adds an Acura/Bose Music System with 6-disc in-dash CD changer.

A Celebration of Internal Combustion.

The spirited Type-S engine features the Variable Valve Timing and Lift Electronic Control (VTEC) system on both intake and exhaust cams plus the added intelligence of intake Variable Timing Control (VTC™) for a broader power band.



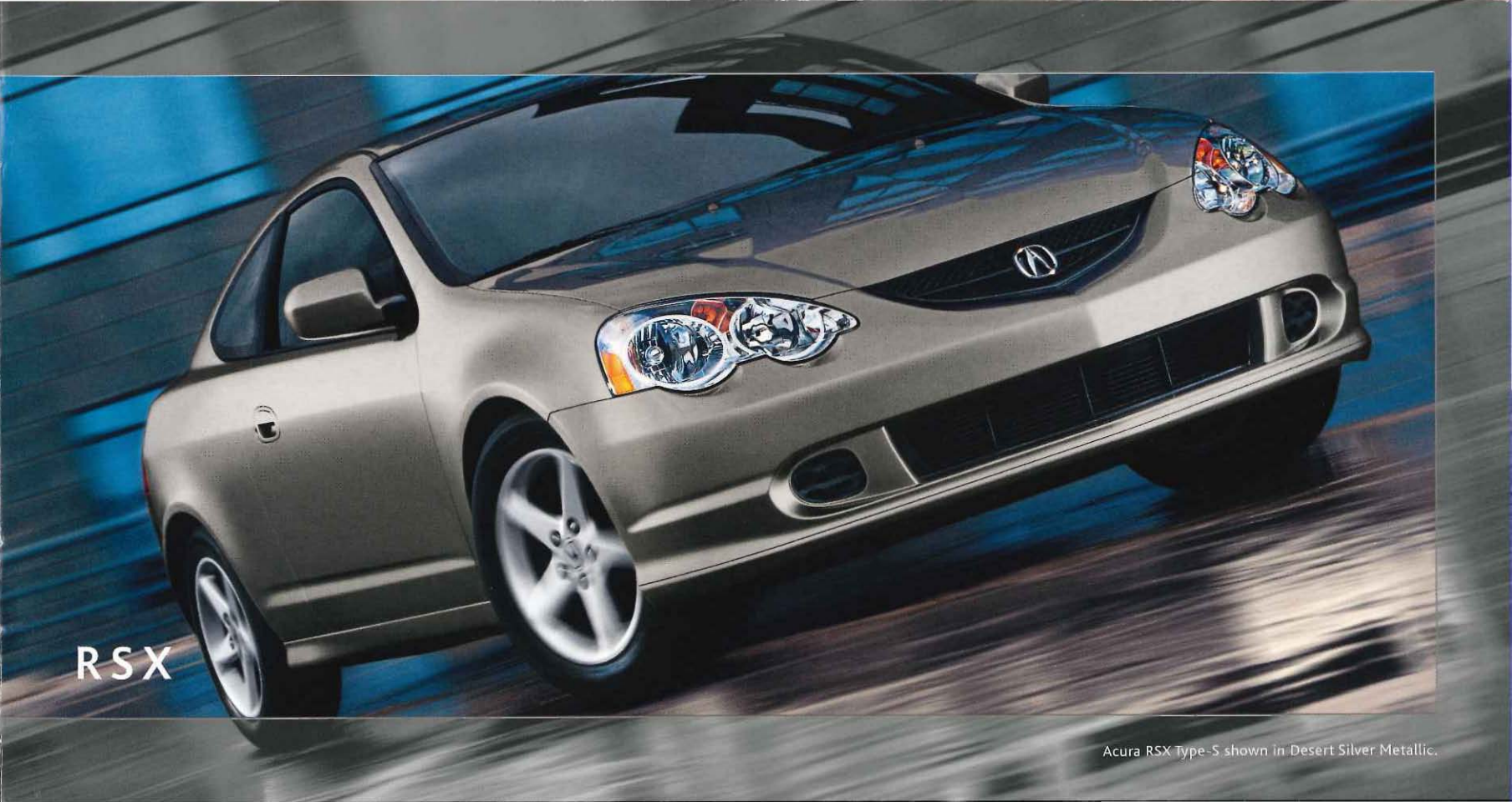
RSX Specifications

- 2.0-Liter, Aluminum-Alloy, 16-Valve, DOHC i-VTEC Engine
- Horsepower: 160 @ 6500 rpm
- Torque: 141 lbs-ft @ 4000 rpm
- 5-Speed Manual Transmission or Available 5-Speed Sequential SportShift Automatic
- 4-Wheel Independent Performance Suspension
- 4-Wheel Disc Brakes with ABS
- 16-Inch Aluminum-Alloy Wheels with P205/55 R16 Tires
- Dual-Stage Front Airbags,* and Front Side Airbags
- Automatic Climate Control System
- Available Perforated Leather-Trimmed Seats
- Power Windows with Driver's Auto-Down/Up with Auto-Reverse

RSX Type-S Specifications

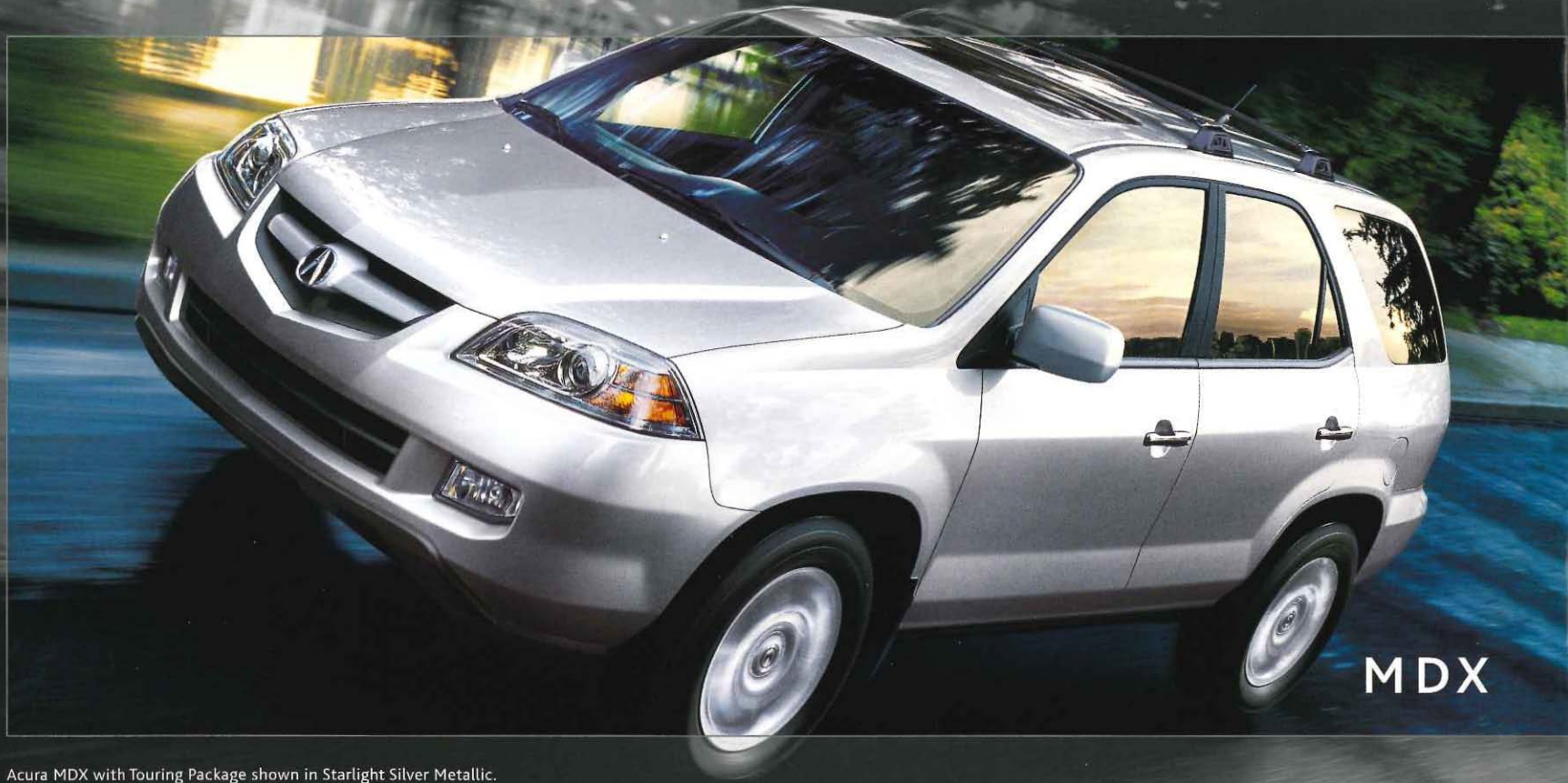
- Horsepower: 200 @ 7400 rpm
- Torque: 142 lbs-ft @ 6000 rpm
- Close-Ratio 6-Speed Manual Transmission
- 4-Wheel Independent Sport-Tuned Performance Suspension
- Acura/Bose Music System with Richbass™ Woofer
- 11.8-Inch Ventilated Front Brake Discs
- Perforated Leather-Trimmed Seats

*Acura reminds you and your passengers to fasten your seat belts.



RSX

Acura RSX Type-S shown in Desert Silver Metallic.



Acura MDX with Touring Package shown in Starlight Silver Metallic.

MDX Specifications

- 3.5-Liter, Aluminum-Alloy, 24-Valve, SOHC VTEC V-6
- Horsepower: 265 @ 5800 rpm
- Torque: 253 lbs-ft @ 3500-5000 rpm
- 5-Speed Automatic Transmission with Grade Logic
- Variable Torque Management 4-Wheel Drive (VTM-4®)
- 4-Wheel Disc Brakes with ABS
- Vehicle Stability Assist (VSA) with Traction Control
- 17-Inch Aluminum-Alloy Wheels with P235/65 R17 Tires
- Dual Front Airbags,* Front Side Airbags and Side Curtain Airbags
- Synchronized Automatic Climate Control System

MDX with Touring Package

- Remote-Linked Driver's 8-Way Power Seat with Power Lumbar Support, and Front Passenger's 8-Way Power Seat
- Remote-Linked Side-Mirror Memory with Passenger's Side Reverse Gear Tilt-Down Feature
- Acura/Bose Sound System with 6-Disc CD Changer
- Roof Rack
- Available Acura Navigation System with Voice Recognition and Rearview Camera
- Available Acura DVD Entertainment System

*Acura reminds you and your passengers to fasten your seat belts.

The Acura MDX flexes its muscles in 2004 with bolder styling, building on its solid reputation as one of the most talented luxury SUVs on the planet. Its 265-hp V-6 engine gives it the big power you need for the interstate and unpaved roads. An advanced 4-wheel-drive system and supple suspension can handle just about any surface. And a spacious interior transports up to seven people or plenty of cargo.†



Equipped for the Haul, Long or Big.

The spacious, leather-trimmed MDX interior comes with heated front seats, an automatic climate control system with rear adjustment, and lots more. You can also fold down the rear seats to create 81.5 cubic feet of cargo room.†

Road Trip or Mind Trip. You Choose.

On those longer stretches of interstate, or even anytime at all, your rear-seat passengers will enjoy the available Acura DVD Entertainment System. It plays movies or music CDs, and offers video-game jacks for even greater versatility.



Image courtesy of Universal Studios.

The Acura NSX® has changed the way people think about exotic automobiles. It's a true mid-engined supercar, injected with undiluted doses of racing DNA. Yet it delivers its thrills with utmost sophistication. Sculpted in lightweight aluminum, appointed in the finest materials and propelled by a 290-hp engine, the 2004 NSX will reward a select few with a new appreciation of what an exotic should be.



A Supercar for All Reasons.

The 290-hp VTEC powerplant with lightweight titanium connecting rods spins all the way to 8000 rpm. You'd never call it a grocery-getter, but the NSX has an engine so smooth and tractable, any reason to go for a drive will do.

Get a Feel for Fast.

Simply put, this cockpit puts you in control. Deeply bolstered seats trimmed in perforated leather embrace you during spirited cornering. Interior amenities abound. And eight interior colors are available to match your paint finish.



NSX Specifications

- 3.2-Liter, Aluminum-Alloy, 24-Valve, DOHC VTEC V-6
- Horsepower: 290 @ 7100 rpm
- Torque: 224 lbs-ft @ 5500 rpm
- Close-Ratio 6-Speed Manual Transmission*
- Drive-by-Wire Throttle System
- Variable Volume Induction System
- Programmed Fuel Injection (PGM-FI)
- Hand-Built All-Aluminum Body
- 4-Wheel Independent Aluminum Double-Wishbone Suspension
- Traction Control System (TCS)
- 4-Wheel Ventilated Disc Brakes with ABS
- 17-Inch Alloy Wheels
- High-Performance Unidirectional Tires
- Removable Aluminum Roof Panel with Onboard Storage
- Automatic Climate Control System
- Acura/Bose Music System
- 6-Disc CD Changer
- Perforated Leather-Trimmed Interior
- Available Body-Color-Matched Interior Trim
- 4-Way Power Driver's and Passenger's Seat Adjustment
- Xenon High-Intensity Discharge (HID) Projector-Beam Headlights

*Automatic transmission available; see acura.com or your dealer for details.



NSX

Acura NSX shown in Rio Yellow Pearl.



acura.com

acura.com Visit our Web site to obtain the very latest information, specifications, photographs, special offers, manufacturer's suggested retail prices and more. You can "design" your own Acura and even personalize it with genuine accessories. Plus, you can apply for financing, see what's in dealer inventories and request a price quote through an Internet-certified Acura dealer.

1-800-to-Acura For information on Acura automobiles, please call us toll-free at 1-800-to-Acura. An operator is there to assist you 24 hours a day, every day of the week.

©2003 Acura Division of American Honda Motor Co., Inc. Acura, 3.5RL, TL, TSX, RSX, MDX, NSX, Acura Navigation System with Voice Recognition, Drive-by-Wire Throttle System, Sequential SportShift, Variable Torque Management, VT-M-4, VSA, HandsFreeLink, VTC, I-VTEC and VTEC are trademarks of Honda Motor Co., Ltd. Covered by patent rights issued and/or pending. Specifications, features and equipment shown in this catalog are based upon the latest available information at the time of publication. Although descriptions are believed to be correct, accuracy cannot be guaranteed. American Honda Motor Co., Inc., reserves the right to make changes at any time, without notice or obligation, in colors, specifications, accessories, materials and models. Some vehicles are shown with optional equipment. OnStar is a registered trademark of OnStar Corporation. Dolby is a registered trademark of Dolby Laboratories. All other trademarks are property of their respective owners. Make an intelligent decision. Fasten your seat belt. ¹XM required monthly subscription sold separately. Other fees and taxes may apply. Reception of the XM signal may vary depending on location. All fees and programming subject to change. Subscriptions subject to terms and conditions included with the XM Welcome Kit and available at www.xmradio.com. Available only in the 48 contiguous United States. ²Navigation system available only in the 48 contiguous United States. ³Service agreement required. OnStar services require wireless service to be available and operating for features to function properly. ⁴High-performance tires available only for manual-transmission model. Traction may be reduced in cold weather. Shorter tread life is likely due to tire compound characteristics. ⁵Carrying too much cargo or improperly storing it can affect the handling, stability and operation of this vehicle. Before carrying any cargo, be sure to consult the owner's manual for load limits and loading guidelines. Printed in the U.S.A. 900M 8/03 E44009

