

# THE ZDX.

THE FIRST CONCEPT FROM ACURA'S NEW DESIGN STUDIO | 2010



INTRODUCING NEXT.

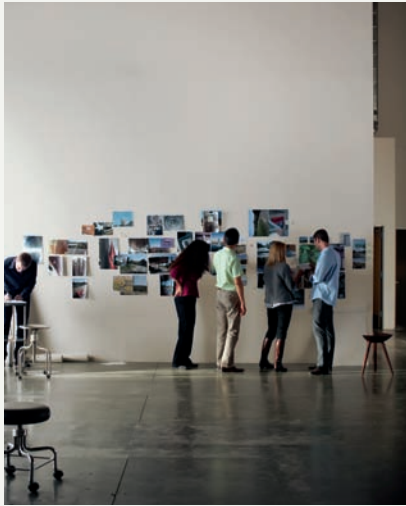




BEFORE YOU CAN CREATE  
A NEW CAR, YOU HAVE  
TO DESIGN SOMETHING  
NO ONE WILL EVER SEE:  
A PROCESS.

————— As the first car conceived at the new Acura Design Studio in California, the creation of the ZDX presented a unique opportunity. Rethink the steps by which a vehicle progresses from lines on paper to finished product. Keep what works. Alter what could work better. Streamline some processes and expand others. Designers were given absolute freedom. Collaboration among different fields of expertise was maximized. In the end, the ZDX emerged as the most refined Acura yet and the new benchmark for all Acuras to come.

influences and inspiration



IT DOESN'T BEGIN WITH ASSUMPTIONS,  
BUT WITH INSIGHTS.

Automotive design can seem like a closed loop, with manufacturers looking to each other for inspiration and validation. In creating the ZDX, we sought influence beyond the world of automotive luxury. We found it in the fluid roofline of a Japanese sports arena that suggests movement even when standing still. In the blending of disparate materials and technologies in a luxury hotel in San Francisco. Even the natural staining of the inside of wine barrels found in Napa Valley led to a new color option for the interior leather. It's why the ZDX is one vehicle that doesn't look just like every other vehicle.

From left to right: Michael Wiedeman: Interior Designer / Kimberly Marte: Color & Trim Designer  
Jon Ikeda: Chief Designer / Michelle Christensen: Exterior Designer / Damon Schell: Exterior Designer





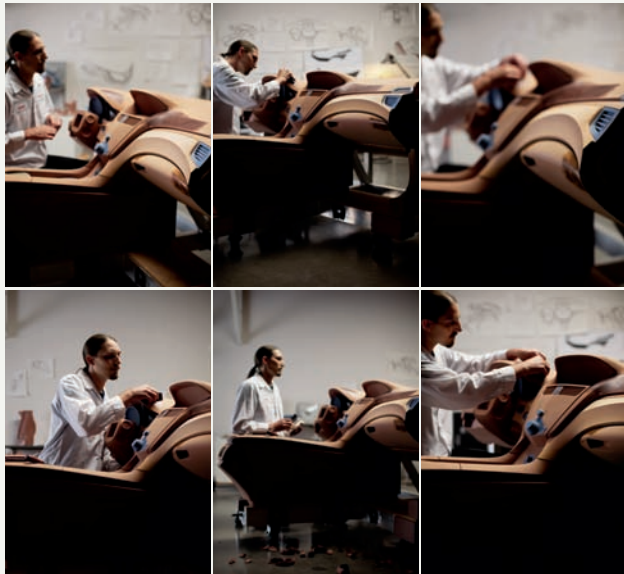
IT'S SKETCHED ON PAPER.

IT'S RENDERED IN CAD FILES.

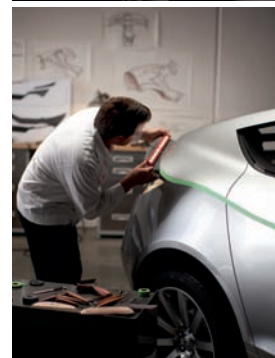
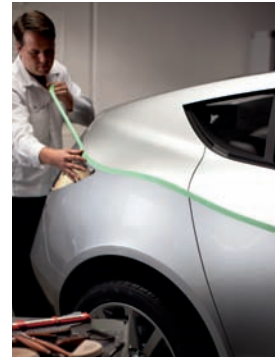
IT'S CARVED IN STONE.

\_\_\_\_\_ During the process of turning ideas into hard, three-dimensional, functioning reality, the designers worked with the engineers every step of the way to ensure that the finished vehicle stayed true to the original sketches. Lines were preserved. Shapes survived. Materials were retained. And you get to experience the rare vehicle that not only started out as a concept, but also ended up as one.





*Cameron Mauldin: Interior Clay Modeler / Glenn Simmons: Exterior Clay Modeler*



\_\_\_\_\_ *It's called design integrity: the idea that every part should relate in some way to every other part. In shaping the ZDX, a new system was employed in which the interior and exterior were fashioned literally side by side. Lines carved in sheet metal are echoed in those crafted in leather. The feeling the vehicle conveys is the same whether experienced from across the street or from the driver's seat. And when all the elements work together, the finished product is more than a collection of shapes; it instead becomes a statement.*

●  
*ZDX in studio*



●  
*interior comfort*

\_\_\_\_\_ The ZDX cockpit was specifically crafted for the weekend escape, with features like heated and available ventilated front seats as well as abundant, hand-selected soft-touch leather supplying the requisite level of comfort. Along with the material richness, what you'll also notice on your first drive is the ambient noise, or more specifically, the lack of it. A special seven-layer fabric is applied to the underbody of the vehicle to help insulate passengers from road noise and vibration. In addition, the vehicle's Active Sound Control detects undesirable engine noise and emits opposing frequencies to help cancel it out.

But you shouldn't get the sense that you're cut off from the world around. The large panoramic glass roof gives both front and rear passengers abundant natural light, even with the UV-light-filtering sunshade closed. In addition, the available multi-view rear camera can show the driver three different angles of what's behind, including a top-down view to help in parking. The available blind spot information system can help detect vehicles, both large and small, that are out of the driver's field of vision.







●  
*ZDX outside studio*



●  
*panoramic glass roof*

\_\_\_\_\_ To make the panoramic glass roof possible, a step in the assembly line had to be rethought. The sheer size of the piece made traditional manufacturing approaches impossible and required a new "top-down" process to carefully position the glass in place. When you experience the sense of openness the roof provides both front and rear passengers, you'll agree, it was a step well worth taking.

SOME LINES CONNECT.

SOME LINES DIVIDE.

WHAT IS INDISPUTABLE IS THAT

ALL LINES HAVE MEANING.

\_\_\_\_\_ How a vehicle looks gives you an idea of its inherent nature. In sculpting the vehicle's exterior, we employed a concept called motion surfacing, treating the sheet metal as if it were a fluid medium. Every line creates a ripple effect with those around it. The wheels seem to be pushing up through the body. The cabin seems to be stretching from the base of the vehicle. Lines are pulled toward the rear like a slingshot at the moment before release. Along with details like the hidden rear door handles, this narrowing effect helps highlight the importance placed on the vehicle's cockpit.



production art

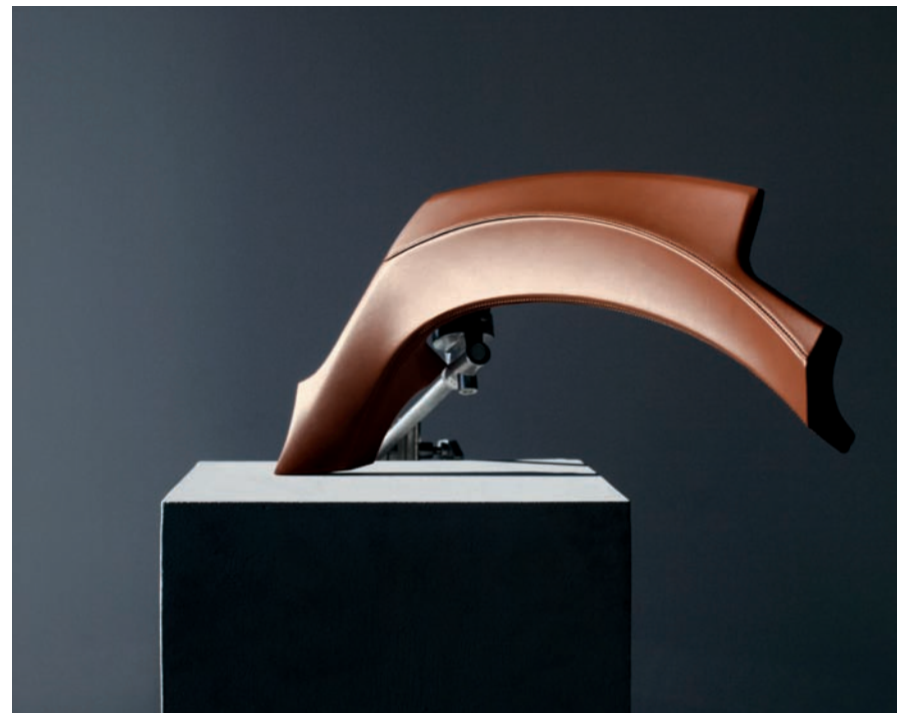


IT'S THE PRODUCT OF ADVANCED METALLURGY.

IT'S AN INDUSTRY FIRST. IT'S A FENDER.

*Much of the ZDX's athletic appearance is the result of its deep rear fenders. They not only contribute to the vehicle's bold stance but also allow the lines running down the side to converge at the rear, as if they were being pulled back taut. Creating the fenders required a deeper draw of sheet metal than on almost any other vehicle in production and necessitated the development of new manufacturing processes to help the metal slip cleanly from the die. The single-piece construction was crucial in retaining the fluid, seamless nature of the original design.*

————— *Modern art. Traditional craft. Unlike the leather found in most luxury vehicles, the natural grain isn't buffed to correct defects. Instead, each piece is carefully selected to ensure quality while retaining its natural grain. Covering the complex shapes of the dash and console created its own challenges. So, we traveled to Papa, Hungary, to work with world-renowned leather craftsmen. Together, we developed a method for hand-fitting and -stitching the pieces together. The care that went into the creation of the leather dash is typical of the attention to detail reflected throughout the ZDX cabin.*



●  
*driving dynamics*



Instead of equating luxury with isolation, we labored to give the ZDX driver a more visceral experience. In addition to its all-weather capability, Acura's exclusive Super Handling All-Wheel Drive™ (SH-AWD®) also inspires confidence through the curves. Sensing where extra torque is needed to keep you on your chosen line, it can distribute power between the front and the rear wheels, and send up to 100% of available rear

power to the outside wheel, which is then rotated slightly faster. Together, these forces give the ZDX a big boost in turning power and more precise steering response.

The available Integrated Dynamics System (IDS) lets you select between Comfort and Sport modes, then adjusts both the speed-sensitive steering and Active Damper System together for a more relaxed or more engaging driving experience. The new

6-speed automatic transmission features a wider gear spread for both quicker acceleration and greater fuel efficiency.<sup>1</sup> Manual control via steering wheel-mounted paddle shifters includes the ability to skip gears when downshifting. Hill start assist can help reduce rollback when you're stopped on a hill. It all makes the ZDX the ideal vehicle for quick getaways, regardless of what the road, or the weather, has in store.



\_\_\_\_\_ In creating the cockpit of the ZDX, the goal was to keep the technology from being overly intrusive. The clean, minimalist central control panel provides a striking contrast with the richness of the surrounding leather. Along with steering wheel-mounted buttons and available voice recognition, it gives you intuitive control of the ZDX's various technologies. These include available systems like navigation<sup>2</sup> with continuously updated traffic<sup>3</sup> and weather<sup>4</sup> information, and the Acura/ELS Surround<sup>®</sup> Premium Audio System.

Tuned by GRAMMY<sup>®</sup> Award-winning producer and sound engineer Elliot Scheiner, the 435-watt, 5.1 channel ELS system takes advantage of the ZDX cabin's unique sound field to recreate the feel of the original studio recording.

The structure of the vehicle itself was designed to encase the subwoofer for improved bass response. Newly available Song By Voice<sup>™</sup> technology lets you verbally call up specific music you stored on the vehicle's 15GB hard disk drive (HDD) or your connected iPod.<sup>5</sup>

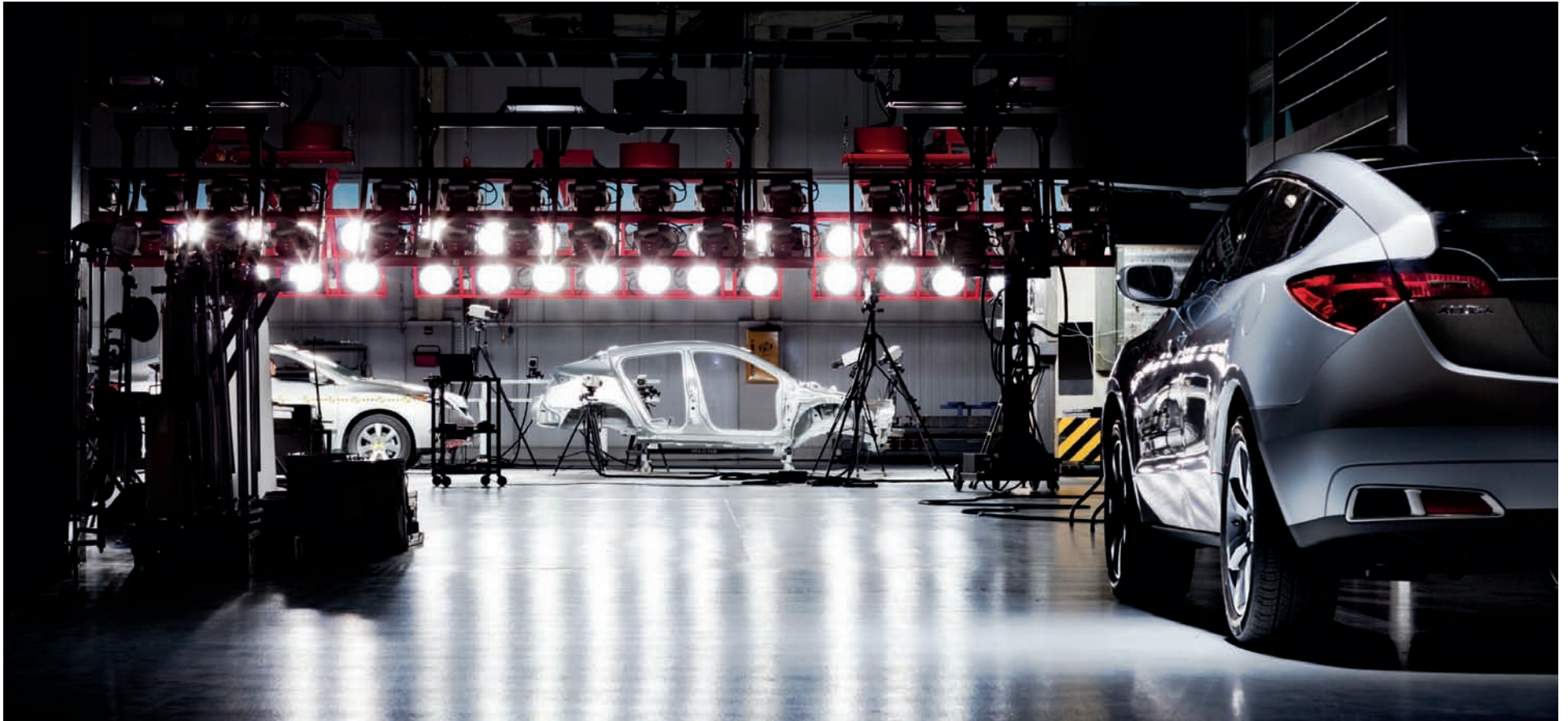


## WHAT IS IT THAT MAKES AN ACURA ENGINE AN ACURA ENGINE?

*To our engineers, it is more than a means of filling horsepower and torque charts with big numbers. It's about producing efficient, flawless output. Generating thrilling response across the entire power band. It's technology like Acura's signature VTEC<sup>®</sup>, which employs two separate cam profiles for a big boost off the line as well as down the road. It's a cold-air induction system that packs in more oxygen for more powerful combustion. It's the use of materials like aluminum and magnesium alloys that result in a lighter, more agile vehicle. Open the throttle of the ZDX's 3.7-liter engine and you'll instantly appreciate the power of innovative thinking.*

\_\_\_\_\_ *It's called magneto-rheological fluid. Pass an electromagnetic charge through it and the suspended iron particles react instantly, lining up to form the intricate shape you see below. Inside the ZDX's available active dampers, it responds to a rise in the magnetic charge by increasing resistance, changing the vehicle's ride quality from smooth and luxurious to tight and sporty. Continuously monitoring road conditions and driver input, the system can adjust in as little as 5 milliseconds, giving you a flatter ride when braking, accelerating and turning.*





THERE IS NO ACURA SAFETY DIVISION.  
IT'S JUST CALLED ACURA.

\_\_\_\_\_ At Acura, we don't believe in treating safety as a distinct discipline. With the well-being of passengers a top priority, safety features were incorporated into virtually every aspect of the ZDX's design. The vehicle's chassis features Acura's Advanced Compatibility Engineering™ (ACE™) body structure, which uses a connected network of structural elements to direct crash energy around the passenger compartment. The Cooperative Vehicle Stability Assist system works with the vehicle's Super Handling All-Wheel Drive to sense a potential loss of traction earlier than conventional systems, and then takes appropriate action to help keep you in control.

In addition, the ABS brakes with Brake Assist can detect emergency braking and deliver maximum brake force. The available Collision Mitigation Braking System™ (CMBS™) can sense objects out front and determine if a collision is possible, or even imminent. It can then employ a variety of preemptive actions, including visual and audio warnings, and in extreme circumstances, automatic application of the brakes and seat-belt tightening, to help reduce collision forces and minimize injury.\*

\*Depending on the circumstances, CMBS may not go through all of the alert stages before initiating the last stage (of collision mitigation).

●  
confidence and control



YOU SPEAK. SYSTEMS RESPOND.  
END OF TUTORIAL.

\_\_\_\_\_ The key to making systems both useful and usable is to infuse technological innovation with human accuracy. To design technology so that it thinks the way you do, so that interaction becomes second nature. The perfect illustration of this concept is the ZDX's available voice-recognition feature. With the ability to recognize thousands of commands, it lets you speak naturally, giving you greater control over many of the vehicle's systems, including the Bluetooth® HandsFreeLink®<sup>6</sup> and the available navigation system<sup>2</sup> with its continuously updated traffic<sup>3</sup> and weather<sup>4</sup> information, Zagat® restaurant reviews and a massive destination database.

*Destination Database*  
7,000,000 points of interest, from gas stations to cultural destinations, make you feel like a local, everywhere.

*Song By Voice*  
The available Acura/ELS audio system's Song By Voice feature lets you call up a song by saying its title or artist.

*AcuraLink Real-Time Traffic™*  
A color-coded system quickly communicates traffic conditions. Traffic Rerouting™ can suggest an alternative route.<sup>3</sup>




*AcuraLink Real-Time Weather™*  
Get current information including precipitation amounts, forecasts and severe weather for virtually any U.S. city.<sup>4</sup>

*Zagat Survey® Restaurant Reviews*  
Get dining recommendations based on the type of cuisine you'd like or the part of town you're driving through.

*USB Audio Interface*  
Have direct control of your iPod or other compatible music device. Track information appears right on the vehicle's center console.<sup>5</sup>

● voice recognition



THIS IS NOT NEW.

*New has gotten old. It's exhausted, winded and has seen better days.  
So let's not call this new. Let's settle on something else.  
Let's simply call this next. The Acura ZDX.*



01

*Integrated exhaust finishers are an Acura first, and contribute to the overall sleekness of the exterior styling.*

02

*The Advance Package's Perforated Milano Premium Leather seats are ventilated to draw moisture away from your body.*

03

*The concave shape of the leather panel that surrounds the cockpit gives driver and front passenger their own personal sense of space.*

04

*Rear door handles are hidden from view, adding to the vehicle's coupe-like appearance.*

05

*Under-floor storage and removable side panels as well as loop carpet give the cargo area a stylish-yet-functional appearance. With the split rear seats up, capacity is 26.3 cu ft., enough for your golf bags. Fold them down and you've got 55.8 cu ft at your disposal.*

06

*Dealer-installed 20-inch accessory wheels are the largest ever offered by Acura.*

## ENGINE

Engine Type	Aluminum-alloy V-6
Displacement (liters)	3.7
Horsepower @ rpm (SAE net)	300 @ 6300
Torque (lb-ft @ rpm)	270 @ 4500
Valvetrain	24-valve, SOHC VTEC*
Compression Ratio	11.2:1
Throttle Control	Drive-by-Wire™ throttle system
CARB Emissions Rating	ULEV-2 <sup>7</sup>
Tune-Up Interval	100K +/- miles no scheduled tune-ups <sup>8</sup>

## CHASSIS

Suspension	4-wheel independent MacPherson strut front/multi-link rear
Stabilizer Bar (front/rear) With Advance Package	24.0 mm / 26.5 mm 24.0 mm / 27.2 mm
Steering	Torque-sensing, variable power-assisted rack-and-pinion  Electronic, variable power-assisted rack-and-pinion (Advance Package)
Turning Diameter, Curb to Curb	38.5 ft
Brakes: 4-Wheel Disc Brakes with ABS, Electronic Brake Distribution (EBD) and Brake Assist	13.0" ventilated front / 13.2" solid rear
Wheels and Tires	19 x 8.5 aluminum-alloy P255/50 R19 103H all-season

## DRIVETRAIN

Type	Super Handling All-Wheel Drive™ (SH-AWD*)
Maximum Torque Distribution Range (front:rear)	90:10 to 30:70
Maximum Distribution of Available Rear-Wheel Torque (left:right)	100:0 to 0:100
Transmission	6-Speed Automatic Transmission with Sequential SportShift paddle shifters and Grade Logic Control

## COMFORT + CONVENIENCE

- Dual-zone, dual-mode adaptive climate control system with humidity control and air filtration
- Remote entry system with folding key and Acura personalized settings for driver's seat, steering column, outside mirrors, climate control, select audio settings and more
- Power windows with driver's and front passenger's auto-up/down, auto-reverse and key-off operation
- Remote- and driver's door lock-operated windows-open function
- Bluetooth® HandsFreeLink® wireless telephone interface<sup>5</sup>
- Active Sound Control
- Steering wheel-mounted controls (cruise control, audio, phone, Multi-Information Display and available voice recognition)
- HomeLink®
- Cruise control
- Hill start assist
- Electronic tilt and telescopic steering column
- Maintenance Minder system
- Remote-linked, power-operated tailgate
- Ambient cabin lighting (front footwells and console)
- Automatic dimming rearview mirror (with rearview camera display on standard ZDX only)
- Rear privacy glass
- 12-volt power outlets (center console and front armrest)

## GENERAL SPECIFICATIONS

EPA Estimated Fuel Mileage (city/highway)	16/23 <sup>1</sup>
Fuel Tank Capacity	21.0 U.S. gallons (79.5 liters)
Required Fuel	Premium unleaded 91 octane <sup>9</sup>
Curb Weight: With Technology Package With Advance Package	4410 lbs (2001 kg) 4419 lbs (2005 kg) 4452 lbs (2019 kg)
Weight Distribution (% front/rear)	58/42

## DIMENSIONS

Headroom	Front Row: 38.0 in (966 mm) Second Row: 35.3 in (896 mm)
Legroom	Front Row: 42.6 in (1083 mm) Second Row: 31.1 in (790 mm)
Shoulder Room	Front Row: 59.7 in (1516 mm) Second Row: 55.4 in (1406 mm)
Hiproom	Front Row: 57.3 in (1456 mm) Second Row: 55.3 in (1404 mm)
Max Passenger Volume	91.2 cu ft

## DIMENSIONS *Continued*

Cargo Volume	Behind Second Row: 26.3 cu ft Behind Front Row: 55.8 cu ft
Wheelbase	108.3 in (2750 mm)
Length	192.4 in (4887 mm)
Height	62.8 in (1596 mm)
Width	78.5 in (1993 mm)
Track (front/rear)	67.7 in (1720 mm) / 67.7 in (1719 mm)
Ground Clearance (unladen)	7.9 in (200 mm)

## EXTERIOR

- Power panoramic multi-panel glass roof with tilt feature, power sunshade auto-open and key-off operation
- Heated outside mirrors with reverse gear tilt-down
- Auto-on/off bi-xenon high-intensity discharge (HID) headlights
- Fog lights
- LED mirror-integrated directional signals

## SEATING + INTERIOR

- Sport seats with leather-trimmed interior
- Premium leather instrument panel, console, and door trim
- Driver's 10-way power seat
- Front passenger's 8-way power seat
- Heated front seats
- Front center console with integrated sliding tray and dual-level storage compartments
- 60/40 split folding second-row seat
- Rear-seat center armrest
- Leather-wrapped steering wheel and gearshift knob

## AUDIO

- Acura 266-watt Premium Sound System with AM/FM tuner, 6-disc in-dash CD, MP3, WMA changer and 8 speakers, including 8-inch subwoofer
- XM® Radio<sup>10</sup>
- USB Audio Interface with iPod® integration<sup>5</sup>
- MP3/auxiliary input jack
- Bluetooth Audio<sup>6</sup>
- Radio Data System (RDS)
- Speed-Sensitive Volume Control (SVC)

## SAFETY + SECURITY

- Advanced Compatibility Engineering™ (ACE™) body structure
- Vehicle Stability Assist™ (VSA®) with traction control
- 4-wheel anti-lock braking system (ABS) with Electronic Brake Distribution (EBD) and Brake Assist
- Dual-stage, multiple-threshold front airbags (SRS)
- Front side airbags with passenger-side Occupant Position Detection System (OPDS)
- Side curtain airbags with rollover sensor
- Active front head restraints
- 3-point height-adjustable seat belts with load limiters and automatic tensioning system (front)
- 3-point seat belts (rear)
- LATCH (Lower Anchors and Tethers for Children) child-seat mounting system
- Daytime Running Lights (DRL)
- Tire Pressure Monitoring System (TPMS) with location and pressure indicators<sup>11</sup>
- Theft-deterrent system with electronic immobilizer
- Side-impact door beams

## TECHNOLOGY PACKAGE (adds to or replaces standard ZDX features)

- Acura Navigation System with Voice Recognition™, Traffic Rerouting™, multi-view rear camera and Zagat Survey® ratings and reviews<sup>2</sup>
- Acura/ELS Surround® 435-watt Premium Audio System with 10 speakers, hard disk drive (HDD) media storage, in-dash CD, DVD-Audio, MP3, WMA and DTS®-featured player, Dolby® Pro Logic® II and AM/FM tuner
- AcuraLink Real-Time Traffic and Weather™<sup>3,4</sup>
- Keyless Access System with smart entry, pushbutton ignition and Acura personalized settings for driver's seat, steering column, outside mirrors, select audio and navigation settings and more
- GPS-linked, solar-sensing, dual-zone, dual-mode adaptive climate control system with humidity control and air filtration
- Song By Voice™
- XM® Radio with Note function music reminder<sup>10</sup>
- Bluetooth HandsFreeLink wireless telephone interface with phone-book exchange<sup>6</sup>
- Automated Appointments™
- Perforated Milano Premium Leather-trimmed interior

## ADVANCE PACKAGE (includes technology package)

- Integrated Dynamics System (IDS)
- Collision Mitigation Braking System™ (CMBS™)
- Adaptive Cruise Control (ACC)
- Blind spot information system
- 3-point height-adjustable seat belts with load limiters and e-pretensioner system (front)
- Exclusive suede-like headliner and trim
- Heated and ventilated front seats
- Ambient inner door-handle lighting

## ACCESSORIES

When it comes to personalizing, choose Acura genuine accessories that are crafted to the same strict levels of quality as the rest of your ZDX. See your Acura dealer for a complete list of accessories or go to [acura.com](http://acura.com).

- Remote Engine Start System
- Back-up sensors
- Sport running boards with LED lighting
- 19-inch and 20-inch aluminum-alloy wheels with chrome-look finish
- Body-colored tailgate spoiler
- Simulated wood steering wheel and shift knob
- Simulated wood interior trim
- Tri-fold cargo cover

## OWNER BENEFITS

\_\_\_\_\_ When you purchase a vehicle as exceptional as the ZDX, you expect service and support to be of the same caliber. After all, a premium automobile is only part of the ownership experience. You also get a commitment. To personalized care. To attentive service. It is apparent the moment you enter an Acura dealership and for years down the road. It comes from a belief that every aspect of owning an Acura should be an enjoyable and rewarding experience.

### Total Luxury Care (TLC®)

As an Acura owner, you'll enjoy an array of services, like the Acura Concierge, for help in an emergency or to plan a trip, Trip-Interruption benefits like alternative transportation, lodging and meals, and 24-hour Roadside Assistance.<sup>12</sup>

### Acura Limited Warranties

All Acura vehicles and Acura Genuine Accessories installed by the dealer at the time of vehicle purchase have a 4-year/50,000-mile limited warranty. Acura vehicles are also covered by a 6-year/70,000-mile limited powertrain warranty, and a 5-year/unlimited-mile limited warranty for outer body rust-through.<sup>13</sup>

### Acura Care®

Comprehensive vehicle and travel protection beyond the initial warranty period is available. See your Acura dealer for all the features and benefits of this program.

### [acura.com](http://acura.com)

Learn more about the ZDX, see photo galleries and technology videos, and find out how the ZDX compares to the competition. You can also build and price your vehicle and get a quote from an Internet-certified Acura dealer.

### Acura Financial Services

This online service lets you weigh the benefits of leasing and financing, estimate your payments, see current offers and special financing programs and get pre-approved.<sup>14</sup>

### MyAcura

Your complimentary MyAcura personalized Web site gives the most current information about your vehicle, including instructional videos, lets you keep a personalized maintenance record, sends service reminders and lets you schedule service appointments online.



*For more information or to build  
your own ZDX, visit [acura.com](http://acura.com)*

©2009 Acura. Acura, ZDX, the stylized "A" logo, Acura Care, AcuraLink Real-Time Traffic and Weather, Acura Navigation System with Voice Recognition, Advanced Compatibility Engineering (ACE), Automated Appointments, Collision Mitigation Braking System (CMBS), Drive-by-Wire, HandsFreeLink, Song By Voice, Super Handling All-Wheel Drive (SH-AWD), Total Luxury Care (TLC), Traffic Rerouting, Vehicle Stability Assist (VSA) and VTEC are trademarks of Honda Motor Co., Ltd. Covered by patent rights issued and/or pending. Acura reserves the right to limit TLC services or reimbursements to any owner or driver when, in the judgment of Acura, the claims become excessive in frequency or type of occurrence. Acura also reserves the right to alter or withdraw the Acura Roadside Assistance Program, or any other part of the Acura TLC Program, at any time without notice. Specifications, features, illustrations and equipment shown in this catalog are based upon the latest available information at the time of publication. Although descriptions are believed to be correct, accuracy cannot be guaranteed. All images contained herein are either owned by American Honda Motor Co., Inc., or used under a valid license. It is a violation of federal law to reproduce these images without express written permission from American Honda Motor Co., Inc., or the individual copyright owner of such images. American Honda Motor Co., Inc., reserves the right to make changes at any time, without notice or obligation, in colors, specifications, accessories, materials and models. Some vehicles are shown with optional equipment.

The *Bluetooth* word mark and logos are owned by the *Bluetooth SIG, Inc.*, and any use of such marks by Honda Motor Co., Ltd., is under license. Dolby and Pro Logic are registered trademarks of Dolby Laboratories. DTS is a registered trademark of DTS, Inc. ELS Surround is a registered trademark of Panasonic Corporation of North America. All rights reserved. GRAMMY is a registered trademark of The Recording Academy<sup>®</sup> and is used under license. HomeLink and the HomeLink house are registered trademarks of Johnson Controls. iPod touch accessory dock is not included. iPod and iPod touch are registered trademarks of Apple Inc. The XM name, XM NavTraffic, and XM NavWeather are trademarks of SIRIUS XM Radio, Inc. Zagat Survey<sup>®</sup> is a registered trademark of Zagat Survey, LLC. Make an intelligent decision. Fasten your seat belt. <sup>1</sup>Based on 2010 EPA mileage estimates. Use for comparison purposes only. Do not compare to models before 2008. Your actual mileage will vary depending on how you drive and maintain your vehicle. <sup>2</sup>Navigation system available in the 48 contiguous United States, Hawaii and Alaska. See your local Acura dealer for current navigation system area coverage. <sup>3</sup>AcuraLink Real-Time Traffic requires monthly premium XM NavTraffic<sup>®</sup> subscription. ZDX with Technology Package includes 90 days of XM NavTraffic service. XM NavTraffic is only available in select markets. <sup>4</sup>AcuraLink Real-Time Weather requires monthly premium XM NavWeather<sup>™</sup> subscription. ZDX with Technology Package includes 90 days of XM NavWeather service. XM NavWeather is only available in select markets. <sup>5</sup>The USB Audio Interface is used for direct connection to and control of some current digital audio players and other USB devices that contain MP3, WMA, or AAC music files. Some USB devices with security software and digital rights-protected files may not work. Please see your dealer for details on compatibility. <sup>6</sup>Visit [www.handsfreelink.com](http://www.handsfreelink.com) for a list of compatible phones and available features. <sup>7</sup>LEV-2 ULEV as rated by the California Air Resources Board. <sup>8</sup>Does not apply to fluid and filter changes or periodic inspections. Actual mileage is determined by actual driving conditions. <sup>9</sup>Using gasoline with an octane lower than 91 may cause damage to the engine. Please consult your dealer for details. <sup>10</sup>Required XM<sup>®</sup> Radio monthly subscriptions sold separately after 90-day trial period. Other fees and taxes may apply, including a one-time activation fee. All fees and programming subject to change. Please see your dealer for details. <sup>11</sup>For optimal tire wear and performance, tire pressure should be checked regularly with a gauge. Do not rely solely on the monitor system. See your dealer for details. <sup>12</sup>See your local dealer for details about Total Luxury Care (TLC) Roadside Assistance and Concierge Service. <sup>13</sup>Ordinary maintenance items or adjustments, parts subject to normal wear and replacement, and certain other items are excluded. See your Acura dealer for the terms and conditions of limited warranties. <sup>14</sup>Acura Financial Services is a DBA of American Honda Finance Corporation.