



ASTON MARTIN

*VANQUISH*



THE SPIRIT OF VANQUISH.  
THE ART OF ASTON MARTIN.



#### CONTENTS

3	INTRODUCTION
8	DESIGN
18	PERFORMANCE
26	ENGINEERING
32	INTERIOR LUXURY
38	INTERIOR TECHNOLOGY
48	PERSONALISATION
62	SPECIFICATIONS
64	Q BY ASTON MARTIN
68	WORKING WITH YOUR DEALERSHIP
70	ASTON MARTIN LIFE

## POWER, BEAUTY AND SOUL.

THE ASTON MARTIN VANQUISH IS THE CULMINATION OF AN EXTRAORDINARY DETERMINATION TO CREATE THE ULTIMATE GRAND TOURER. BY COMBINING SOARING PERFORMANCE, METICULOUS CRAFTSMANSHIP AND EFFORTLESS LUXURY, VANQUISH EMBODIES THE VERY ESSENCE OF ASTON MARTIN AND YET REDEFINES EACH CORE ELEMENT TO CREATE A MACHINE WITH UNPRECEDENTED BREADTH OF ABILITY. VANQUISH IS THE ULTIMATE GT, REALISED.

ENJOY THE EXTRAORDINARY  
ON EVERY JOURNEY.

Vanquish does not compromise. Athleticism and agility meld with soothing refinement and cossetting luxury so that Vanquish is always the perfect companion. The latest

evolutionary step raises the bar once again. Performance, dynamics and efficiency reach new heights and every journey is a feast for the senses.





SCULPTED STRENGTH,  
SINUOUS CURVES.

Vanquish honours tradition while forging a new direction for the future. Lean and muscular yet tastefully understated, Vanquish is unmistakably Aston Martin.

Its sinuous curves are shaped from carbon fibre and cleave to an incredibly rigid aluminium structure. Form and function have rarely combined to such stunning effect.

DESIGN

PAST, PRESENT AND FUTURE  
IN A SINGLE ASTON MARTIN.



## THE CULMINATION OF 100 YEARS OF SUCCESS.



Since its beginnings Aston Martin has strived to be the best. The stage has varied over the years – from a small hill climb in Aston Clinton, Buckinghamshire, to the ferocious demands of Le Mans and, of course, the roads of every continent – but

the determination to deliver something unique and unrivalled has been steadfast. Vanquish draws on every victory and from every ounce of skill and energy expended by the people intrinsic in the Aston Martin story.

1956  
Aston Martin DBR1

The most famous Aston Martin race car of all-time, the DBR1 was built to compete in the World Sports Car Championship against the likes of Ferrari. A triumphant 1959 season saw the DBR1 score numerous wins, none greater than its historic outright victory in the 24 hours of Le Mans.

2012  
Aston Martin Vanquish

Increased performance and efficiency, thrilling dynamism and cossetting luxury are core qualities of the new Vanquish range. Powered by a magnificent new V12 engine with 568 bhp (576 PS) and the supremely refined and fast-shifting 8-speed Touchtronic III automatic gearbox,

clothed in carbon fibre bodywork, equipped with advanced infotainment systems and endowed with generous occupant and luggage space, Vanquish defines the Ultimate GT.

“VANQUISH IS A BOLD AND ORIGINAL BLUEPRINT FOR THE NEXT GENERATION OF ASTON MARTIN. AN IMPECCABLE SUPER GT EXUDING TIMELESS MODERNITY AND, IN VOLANTE FORM, BEWITCHING YET UNDERSTATED GLAMOUR. IT IS THE DEFINITION OF A 21ST CENTURY SUPER GT.”

- Marek Reichman, Design Director

Vanquish takes inspiration from the extraordinary One-77 supercar to bring a fresh sense of dynamism to Aston Martin's ethos of understated elegance. Its carbon fibre skin grants the freedom to explore sheer surfaces and harder lines, which imbues Vanquish with a lithe, tightly tailored stance. These daring design treatments combine with the iconic Aston Martin grille and proportions to create an unmistakable and athletic elegance.

Vanquish Volante retains the powerful silhouette and aerodynamic efficiency of its Coupe sibling. For the first time on a Volante model, Vanquish benefits from a full height windscreen that mirrors the Coupe form and blends seamlessly into the multi-layered fabric roof. The final flourish on both is the innovative one piece Aero Duct bootlid with integrated rear spoiler, that manipulates the airflow and enhances the dazzling One-77 inspired LED light blade rear lamp and the full-width carbon fibre rear diffuser. Each inspired detail blends into the next to create a virtuoso performance for the world to enjoy.





EFFORTLESS STYLE,  
INTUITIVE TECHNOLOGY,  
ENDLESS ENJOYMENT.

Vanquish puts the driver at its very centre, creating a relaxing ambience that is underscored by a palpable sense of excitement and control. The flowing design of the centre console, inspired once again by the One-77, has an organic quality and provides intuitive functionality for all of the major controls. It is one example of craftsmanship and technology intersecting seamlessly,

a theme continued by the authentic, tactile materials blended with fully integrated navigation, Bang & Olufsen audio and latest generation AMi Infotainment System. Vanquish also offers a bespoke level of personalisation with myriad choices of leather and quilting options and centre stack finishes so you can define your space and enjoy it on every journey.





## NOTHING IS MORE COMPLEX THAN ACHIEVING SIMPLICITY.

Purity of design, precision, immaculate execution and exquisite quality are some of the key themes at the core of the new Vanquish range. The dramatic sculpted carbon fibre curves of its outer skin embody those very qualities. Fusing the aesthetic with the functional – crucial in a car of the Vanquish's performance potential – requires a meticulous approach: Every line is agonised over, every shutline scrutinised to ensure it enhances the visual flow and contributes towards aerodynamic balance.

Transferring the visual tension of the Coupe into Volante form was an exciting challenge. With patience and by adopting new engineering techniques the design team achieved its aims. The Volante is as captivating as the Coupe. It exudes a scintillating dynamism with the roof up or in the stowed position, when an aerodynamically optimised tonneau panel flows down to the Aero Duct bootlid. The Vanquish range embodies potency and extreme performance, yet avoids exaggeration and excess. The very essence of Aston Martin.



## PERFORMANCE TWELVE TO THE POWER OF EIGHT.

**6.0** Litre  
V12

**568** BHP  
(576 PS)

**630** Nm  
TORQUE

**201** MPH TOP SPEED  
(323 KM/H)

**3.6** SECONDS  
0-60 MPH  
(3.8 SECONDS 0-100 KM/H)

Vanquish has always combined a rich, accessible power delivery with savage supercar performance when called upon. With new and more sophisticated engine management, increased power and an all-new 8-speed Touchtronic III automatic gearbox, its abilities have expanded in every direction.

The magnificent 6.0-litre V12 has evolved to become more powerful and more responsive and it finds the perfect partner in the smooth, fast-shifting Touchtronic III gearbox. Vanquish harnesses its 568 bhp (576 PS) with remarkable results. It is capable of 201 mph and covers 0-60 mph in 3.6 seconds, yet with much improved fuel efficiency, lower emissions and greater refinement, Vanquish has a broader range of talents than ever before.

## THE SOPHISTICATED REVOLUTION.

**130**<sub>MS</sub>  
QUICKEST GEARSHIFT DURATION

**8** RATIOS

The elemental power of the Vanquish 6.0-litre V12 now works in combination with one of the most sophisticated gearboxes in the world. The 8-speed Touchtronic III gearbox is a revolution, improving every facet of the Vanquish driving experience. Gearshifts are smoother and quicker (as fast as 130 milliseconds), refinement is improved at high speeds, more power is transmitted to the road and its lower mass improves driving dynamics. With four driving modes and adaptive shift programming that adjusts to the driver's inputs, Touchtronic III performs for every driver and every situation and gives unfettered access to the iconic V12 engine with absolute control.



51%

49%



### Engine

- Alloy, quad overhead camshaft, 48-valve, 5935 cc V12
- Front mid-mounted engine, rear-wheel drive
- Fully catalysed stainless steel exhaust system with active bypass valves
- Compression ratio 11:1
- Max power 423 kW (568 bhp/576 PS) at 6650 rpm
- Max torque 630 Nm (465 lb ft) at 5500 rpm

- Acceleration – 0-60 mph Coupe in 3.6 seconds, Volante in 3.8 seconds
- Acceleration – 0-100 km/h Coupe in 3.8 seconds, Volante in 4.0 seconds
- Max speed – Coupe 201 mph (323 km/h) Volante 197 mph (317 km/h)

### Transmission

- Rear mid-mounted, Touchtronic III 8-speed automatic gearbox with electronic shift-by-wire control system
- Alloy torque tube with carbon fibre propeller shaft
- Limited-slip differential
- Final drive ratio 2.73:1

See specification at rear of brochure



## THE SPEED OF SOUND.

Aston Martin's 6.0-litre V12 is characterised by a smooth, accurate power delivery, performance on a vast scale and the spine-tingling howl of a thoroughbred. At its heart, the Vanquish range features an updated version of this V12 controlled by a sophisticated new Bosch engine management system that brings further precision and seamless control. Power is up to 568 bhp (576 PS) at 6650 rpm to ensure the supercar fireworks you would expect of the Ultimate GT, whilst a muscular 630 Nm of torque provides an authoritative effortlessness for everyday driving.

Raw numbers tell part of the story, but cannot convey the sense of luxurious power available at any moment. Engineered to deliver a torrent of performance from idle to its rev limit in one mighty wave, the noise and the force of Vanquish is all-enveloping and unforgettable.

## SPORTS CAR SOUL.

Vanquish is a car of rare harmony. Part luxury car, part sports car, its stiff aluminium 'VH' architecture, lightweight carbon fibre skin and sophisticated suspension create a cohesive whole that never feels compromised. It is a car of many moods but one that is always deliciously poised.

New Vanquish has been comprehensively retuned to deliver an even more dynamic driving experience. Our revised Adaptive Damping System (ADS) continues to offer three modes; Normal, Sport and Track, which have been refined to create a greater sense of agility and control at all speeds. Whichever mode you choose the car's near-perfect weight distribution and progressive, intuitive balance combine to deliver the consummate Super GT driving experience. The DSC stability control system is also reprogrammed to work seamlessly with the new Touchtronic III gearbox.

This supreme gearbox offers four driving modes, Drive, Drive-Sport, Paddle and Paddle-Sport, with the response time dropping and aggression ramping-up progressively until Vanquish shifts in just 130 milliseconds in Paddle-Sport mode. There is also a new Optimal Downshift function that selects the lowest ratio possible as you pull and hold the downshift paddle under heavy braking, ensuring maximum acceleration is available on corner exit.

Standard fit 3rd Generation Brembo Carbon Ceramic Matrix (CCM) disc brakes – measuring 398 x 36 mm at the front and 360 x 32 mm at the rear – and new optional forged alloy wheels enhance agility and contribute to greater composure. Never has a car of such performance been so intuitive and controllable in such a wide range of disciplines.





## ENGINEERING HIDDEN INTELLIGENCE.

“VANQUISH IS A CULMINATION OF EVERYTHING WE KNOW FROM A DESIGN AND ENGINEERING PERSPECTIVE. WITH GREATER POTENCY, AGILITY, EFFICIENCY AND LUXURY, WE HAVE CREATED A PUREBRED SPORTING GT AND THE ULTIMATE VOLANTE. BOTH ARE ABSOLUTELY WORTHY OF THE ICONIC NAME.”

- Ian Minards, Director of Product Development

## SCIENCE AS ART.

### MORE RESPONSIVE

The torsional rigidity of the VH architecture allows the suspension to be finely tuned for ultimate response and startling agility. Steering feedback is also improved.

In the process of engineering Vanquish, every single aspect has been carefully considered, improved and radically evolved. At its core is the latest iteration of our acclaimed bonded aluminium VH architecture. The heavily re-engineered body structure uses extruded, sheet and cast aluminium components, together with carbon fibre. It achieves supreme torsional stiffness and exceeds all legislative crash requirements.

### OPTIMUM MASS DISTRIBUTION

Intense evolution of every component has led to a lowered centre of gravity and mass being centralised in the chassis as much as possible, transforming the Vanquish's inherent dynamic qualities.

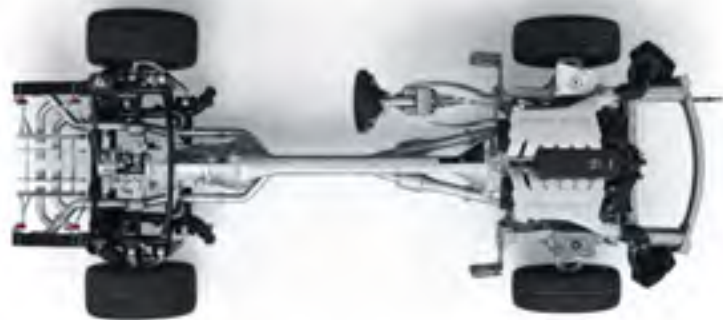
Conceived as a Coupe and Volante from its development inception, Vanquish has benefited significantly in a dynamic sense from these great strides in construction techniques, with an unrivalled breadth of ability matched to an intensely focused character when required.

### SAFER

Vanquish is inherently safe due to its predictable chassis balance and strong aluminium chassis. ABS, traction control and DSC stability control provide yet more reassurance. Curtain side head airbags, dual-stage front airbags, seatbelt dual pre-tensioners and pelvis and thorax seat-mounted airbags are fitted should an accident occur.

### EXCEPTIONALLY STIFF

Torsional stiffness – the body structure's resistance to twisting forces – is key to Vanquish's inherent dynamism. Advances in alloy technology, all carbon fibre body panels, an optimised front suspension strut and body brace create an incredibly strong structure. Reinforcing shear panels and thicker sills further bolster the Volante.







## CLOAKED IN A SUIT OF CARBON FIBRE.

Vanquish is the first Aston Martin to use carbon fibre for all of its body panels. Boasting an exceptionally high strength-to-weight ratio, this advanced material reduces mass and increases structural rigidity. It has enabled our design team to realise complex, muscular forms, provided the engineers a superior

dynamic platform and ensured that the Volante driving experience is near-identical to the Coupe. Where carbon fibre is left exposed, intricate manufacturing of the panel ensures the direction of the weave always complements the shape of the car. Cutting-edge technology meets time-honoured attention to detail.

INTERIOR LUXURY  
INNER SPACE.





## BESPOKE LUXURY.

Designed to cosset in unrivalled comfort and crafted from the finest natural materials, Vanquish offers a uniquely relaxing driving environment. Striking a perfect balance between intimacy and spaciousness, the cockpit connects you completely with the car yet isolates from fatigue as you would expect of the Ultimate GT.

The exquisite interior design is canvas for you to express your own ideas. A vast array of woods, carbon fibre and other materials are offered as well as a wide choice of supple leathers and Alcantara® shades and finishes. Each cabin is crafted by hand with passion and absolute precision to your exacting requirements. With over three million available combinations of trim, this extraordinary space can portray a myriad of moods and sensations but it is always the perfect place from which to orchestrate the Vanquish.

## DESIGNED TO BE DRIVEN.

We know you will want to drive your Vanquish, which is why the practicalities of modern life were as important to our development team as dreamy drives along the Côte d'Azur. So in addition to the greatly increased space for you and your passenger, we have ensured there is generous space for your luggage.

Thanks in part to the carbon fibre construction of the rear body structure, boot capacity is exceptional at 368 litres (Coupe) and 279 litres (Volante), so long weekends away playing golf, continental adventures or a simple trip into the city are all easily accomplished by Vanquish or Vanquish Volante.



# INTERIOR TECHNOLOGY

## EXQUISITE AND INTUITIVE, A WORLD OF PRECISE HARMONY.

Gracefully bisecting the cockpit is an elegant centre stack. Distinctive and functional, featuring a large pop-up display screen along with controls for the transmission, climate control and infotainment systems, this intuitive interface is the nerve centre of Vanquish. Some elements, such as the docking station for the 'ECU' (Emotional Control Unit) glass starter module and glass 'PRND' gear selection buttons, are familiar Aston Martin features. However for Vanquish, these elements are incorporated into a new and unique aluminium fascia panel with cutting-edge technology, which provides a supreme sense of quality.

AMi (Aston Martin Infotainment) and the climate control systems are manipulated using new touch-sensitive switches. Taking inspiration from the latest smartphones and tablet devices, these capacitive switches emit 'haptic feedback' by delivering a subtle vibration to provide sensory confirmation that the system recognises your instruction. These haptic switches are supplemented by a joystick, which includes rotary control as well as up/down/left/right, ensuring precise control and easy input of instructions to AMi. All the infotainment and vehicle systems are integrated, with information viewed on a single and retractable 6.5" LCD screen embedded into the centre stack. The system's rich graphics and smooth animation make it a pleasure to view and use.

### Haptic feedback

Touch-sensitive glass switches control AMi and climate control systems. Just like touchscreen mobile devices these capacitive switches give 'haptic feedback' –

a slight vibration of the surface – to let you know the system has recognised your fingertip input and carried out your instruction.



## MUSIC TO MOVE YOU.

If the sound of a creamily cultured yet savagely powerful 6.0-litre V12 is not enough entertainment, Vanquish and Vanquish Volante are equipped with a specially developed Bang & Olufsen sound system. With 1000 watts of amplification and an array of 13 perfectly positioned speakers, the Bang & Olufsen system delivers a sensational listening experience with a clear and natural tone, bringing your favourite music to life as never before.

Bang & Olufsen's highly skilled 'tonmeisters' have expertly shaped the delivery by balancing over 2000 tuneable parameters to achieve the perfect experience. The attention to detail is such that Coupe and Volante have their own unique sound tuning set-up to account for their different body materials and unique acoustics. Sound replication is maintained in all driving conditions through imperceptible equalisation adjustments determined by algorithms that utilise multiple vehicle sensors, including an in-car microphone. Every nuance is captured, every emotion conveyed.



### Acoustic Lens Technology

The Bang & Olufsen systems for Aston Martin include two moving acoustic lenses mounted at each side of the dashboard. When the sound system is activated, each acoustic lens elevates slightly and elegantly

from their position below the dashboard. The lenses ensure a wide, 180° horizontal dispersion as well as preventing vertical artefacts, therefore assisting in imaging and sound staging.



Patented Acoustic Lens Technology Geometry

High frequency tweeter

Acoustic Lens house with moving mechanism

Rubber isolators prevent vibrations being transmitted



### Closed speaker cabinet

The specialised use of closed speaker cabinets considerably enhance crispness of audio replication as well as improving privacy inside the car by reducing the amount of sound transmitted externally.



OPEN AIR THEATRE.  
BREATHTAKING  
PERFORMANCE.





## CLOSER TO THE ACTION.

Vanquish Volante brings greater intensity to an already dazzling experience. The sonorous noise of the 6.0-litre V12 is on your shoulder, the sights and smells whipping around the car seem more vivid and more colourful and Volante

feels controlled, composed and pulsates with feedback. Vanquish's inner strength ensures that Volante shows no signs of compromise and instead adds another layer of visceral excitement. The Power of Luxury truly comes to life.





## TWO FORMS, SINGULAR ELEGANCE.



**14** SECONDS TO OPEN

For the first time on a Volante model the athletic stance of the Coupe is retained thanks to the use of a sweeping full height windscreen. This elegant and strengthened structure blends precisely into the luxurious roof to give a clean, crisp look that is unmistakably Aston Martin. Dynamically it remains true to the Vanquish ethos. The Volante is the fastest and most dynamically polished we have ever created. It is also the most luxurious.

Key to the Volante's intoxicating dual personality is a complex multi-layer fabric roof that folds away at the touch of a button. The outer canopy is an

acoustically enhanced three-ply composite, supported by an insulating Thinsulate™ interlayer. Finally a luxurious headlining, which can be specified to complement any cabin finish, is applied. The roof is available in a full range of colours so you can create the perfect aesthetic match with your exterior and interior preferences,

The Vanquish Volante transforms from a highly refined closed GT to an intensely charismatic convertible in just 14 seconds and at speeds of up to 30 mph (48 km/h) for ultimate convenience.\*

\* Aston Martin recommends that the roof is only operated while the vehicle is stationary.

## DESIGNER'S CHOICE

PERSONALISATION

### Tungsten Silver Extreme simplicity

Pure dynamism expressed with dramatic restraint



**Front grille:** Black vaned  
**Brake Caliper:** Grey  
**Wheels:** Lightweight forged  
Satin Black painted wheels with  
diamond-turned finish

**Leather:** Phantom Grey  
**Stitch:** Californian Poppy  
**Seat Accents:** Californian Poppy leather  
**Seat inserts:** Phantom Grey perforation  
**Facia Trim:** Twill carbon fibre  
**Paddleshift cover:** Californian Poppy leather  
**Steering Wheel Leather colour:** Phantom Grey

### Diavolo Red Powerful luxury

Vivid elegance, unmistakable charisma



**Front grille:** Bright vaned  
**Brake Caliper:** Black  
**Wheels:** Lightweight forged  
Gloss Black painted wheels with  
diamond-turned finish

**Leather:** Dark Knight  
**Stitch:** Dark Knight  
**Seat Accents:** Dark Knight  
**Seat inserts:** Dark Knight perforation  
**Facia Trim:** Herringbone carbon fibre  
**Paddleshift cover:** Spicy Red leather  
**Steering Wheel:** Black leather

### Divine Red Vibrant dynamism

A bold and carefree celebration of individuality



**Front grille:** Bright vaned  
**Brake Caliper:** Grey  
**Wheels:** Lightweight forged  
Silver painted wheels with  
diamond-turned finish

**Leather:** Iron Ore Red  
**Stitch:** Fandango Pink  
**Seat Accents:** Iron Ore Red leather  
**Seat inserts:** Iron Ore Red leather  
**Facia Trim:** Piano Black  
**Paddleshift cover:** Iron Ore Red leather  
**Steering Wheel:** Iron Ore Red leather

### China Grey Sophisticated performance

Exudes confidence through subtle aggression



**Front grille:** Black vaned  
**Brake Caliper:** Red  
**Wheels:** Lightweight forged  
Satin Black painted wheels with  
diamond-turned finish

**Leather:** Spicy Red  
**Stitch:** Silver  
**Seat Accents:** Spicy Red leather  
**Seat inserts:** Spicy Red perforation  
**Facia Trim:** Herringbone carbon fibre  
**Paddleshift cover:** Spicy Red  
**Steering Wheel:** Spicy Red leather

# EXTERIOR PAINT PALETTE

Vanquish is our vision of the Ultimate GT but it truly comes to life through the colours and finishes that inspire you. Dazzling or restrained, daring or laced with subtle confidence, Vanquish can

be interpreted in a vast array of styles and convey many moods or sensations. Our paint options are divided into three categories – Fast Track, Contemporary and Special Colours.

## Fast Track



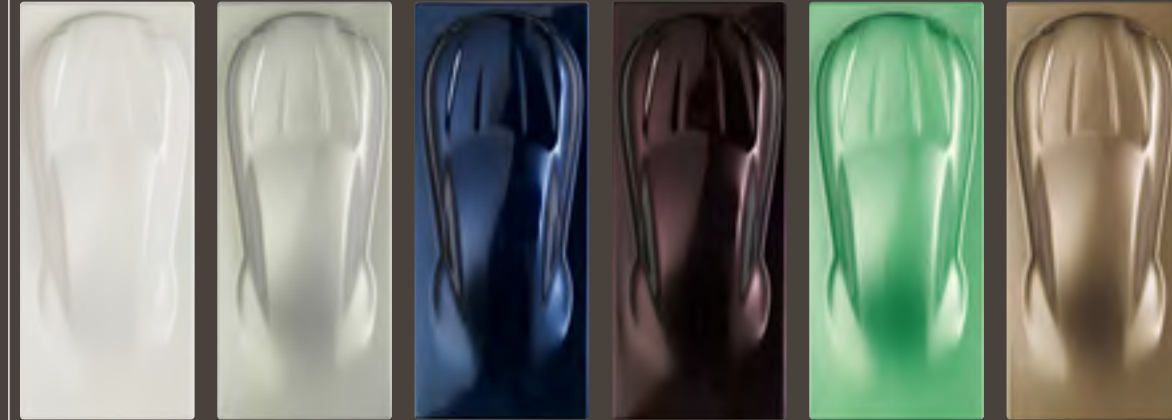
Jet Black Onyx Black Midnight Blue Silver Fox



Meteorite Silver Tungsten Silver Volcano Red China Grey

Confident, understated and elegant, Fast Track ranges from solids through to metallics

## Contemporary

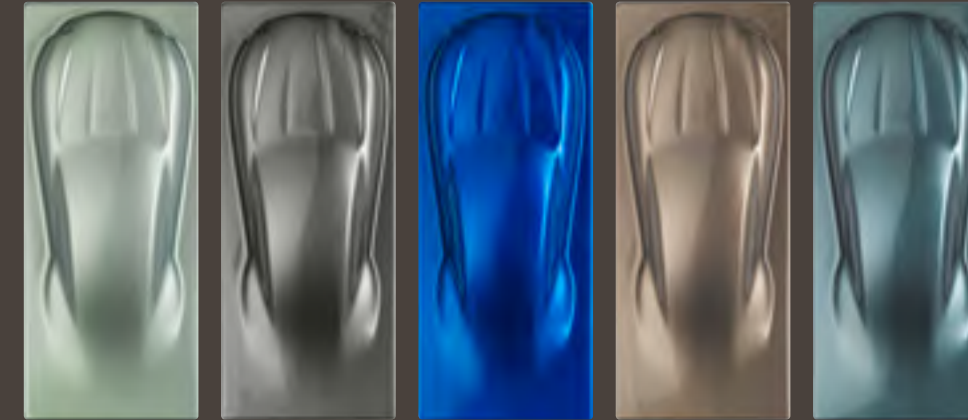


Stratus White Silver Blonde Mariana Blue Amethyst Red Appletree Green Selene Bronze

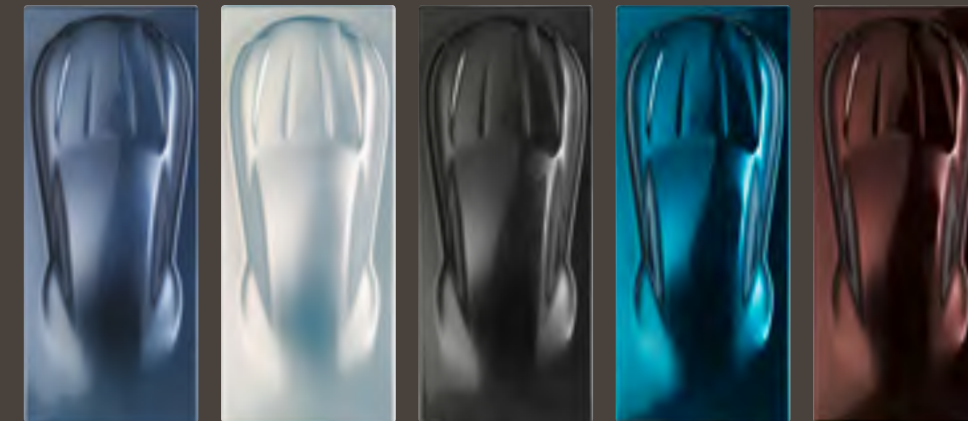


Viridian Green Marron Black Madagascar Orange Mako Blue Grey Bull

Paint technology and trends merge to create eye catching and subtle visual effects. Stylish, sleek and bold metallics and xyrallics blend to create a stunning palette.



Hardly Green Hammerhead Silver Cobalt Blue Arizona Bronze Sea Storm

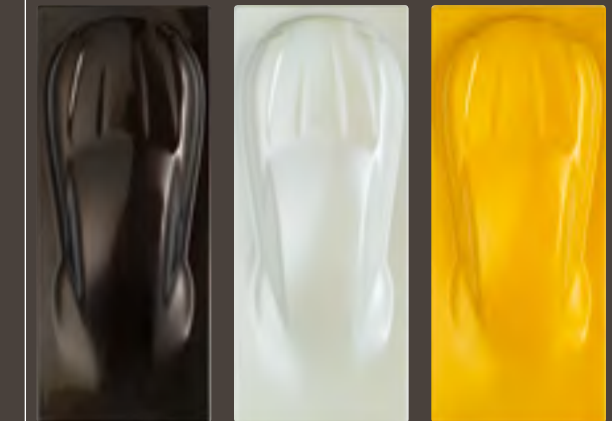


Concours Blue Lightning Silver Quantum Silver Ocellus Teal Divine Red

## Special Colours



Sunburst Yellow Skyfall Silver Storm Black Diavolo Red



Kopi Bronze Morning Frost White Yellow Tang

An intimate palette of specialist technologies including true Pearls, tri-coats and tinted clear-coats. The impact of their individual technology pushes the boundaries of paint to create truly striking exteriors.

# LEATHER COLOUR PALETTE

Our trim options are divided into two categories – Fast Track and Contemporary. Vanquish is a blank canvas to be interpreted and defined on your terms. Every detail can be tailored to your tastes and personality.

Utilising the finest materials and created by skilled artisans, creating your own vision of our Ultimate GT is a rite of passage into Aston Martin ownership.

## Fast Track



Chainmail Grey Dark Mocha



Obsidian Black Baltic Blue

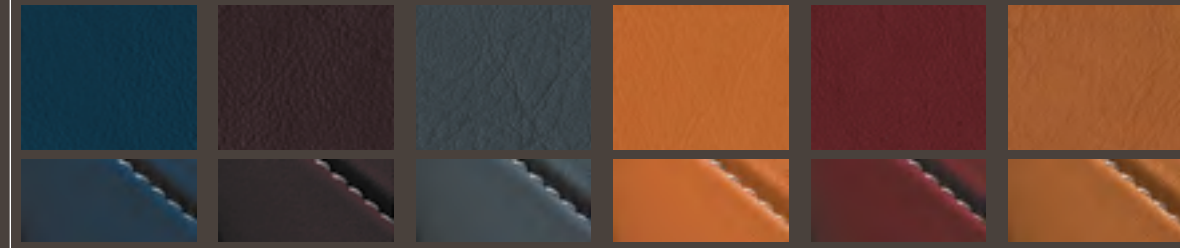


Phantom Grey Spicy Red



Iron Ore Red Parliament Green

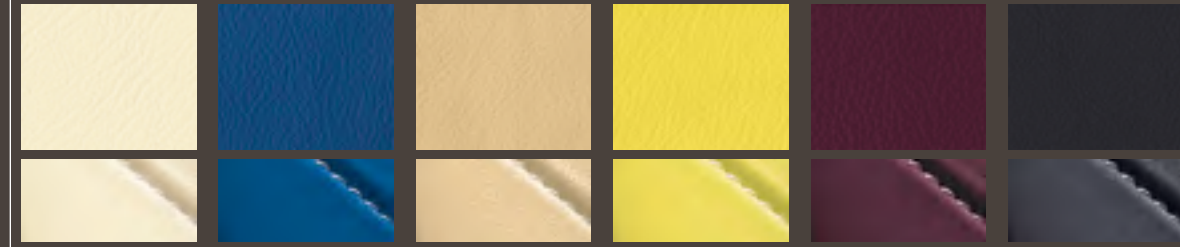
## Contemporary



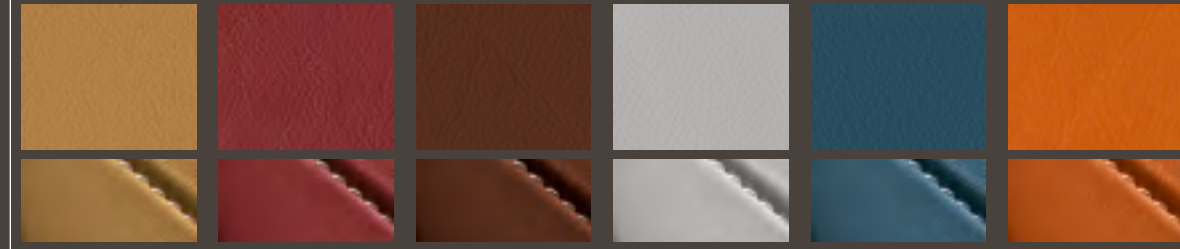
Aurora Blue Bitter Chocolate Blue Haze Madagascar Orange Lords Red Kestrel Tan



Eifel Green Deep Purple Sandstorm Pure Black Ice Mocha Ivory



Cream Truffle Spectral Blue Winter Wheat Electron Yellow Fandango Pink Dark Knight



Sahara Tan Chancellor Red Chestnut Tan Argentio Grey True Teal Californian Poppy

# INTERIOR FINISHES

## Leather Finishes



Hourglass quilted leather



Semi Aniline (Available in a limited range of colours)



Micro perforation

## Interior Finishes

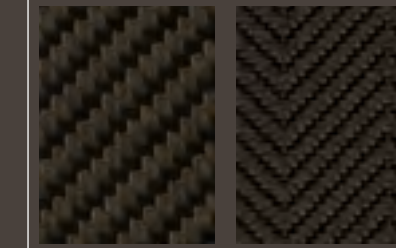


Satin Chrome



Shadow Bronze

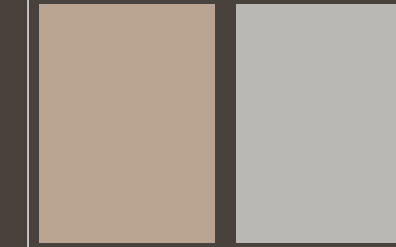
## Facia



Twill carbon fibre Herringbone carbon fibre



Piano Black Piano Red



Piano Ice Mocha Iridium Paint

Hood –  
Fast Track



Westminster  
Green

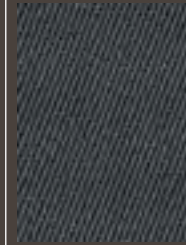


Black



Atlantic Blue

Hood –  
Contemporary



Titan Grey



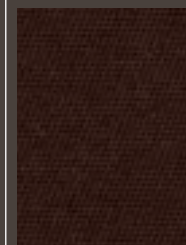
Grenadine Red



Burgundy

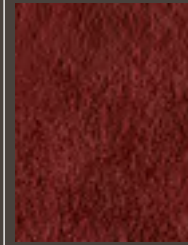


Sandstorm



Bitter Chocolate

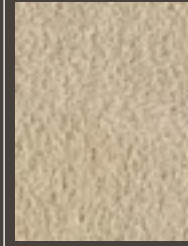
Alcantara –  
Fast Track



Chancellor Red



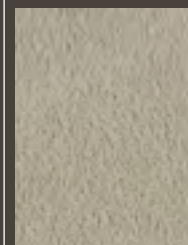
Cirrus Grey



Ivory



Obsidian Black



Moon Shadow

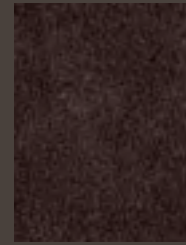


Tailor's Grey

Alcantara –  
Contemporary



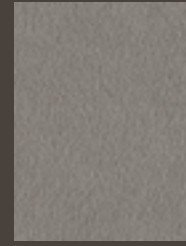
Arctic Blue



Bitter Chocolate



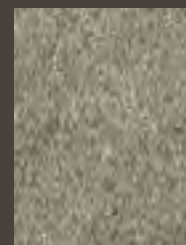
Light Tan



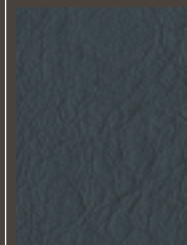
Ice Mocha



Grey Blend



Tan Blend



Blue Haze

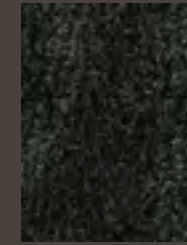


Pure Black

Carpet –  
Fast Track



Black Cherry



Parliament  
Green



Caspian Blue



Phantom Grey



Obsidian Black

Carpet –  
Contemporary



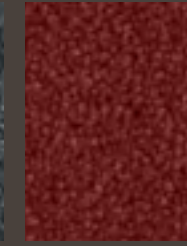
Bitter Chocolate



Sandstorm



Blue Haze



Chancellor Red

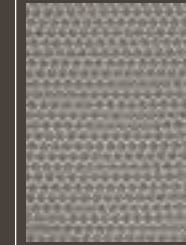


Sahara Tan



Ice Mocha

Seat Belts



Silver



Warm Charcoal



Flint



Ice Mocha



Chancellor Red

Of course, your Aston Martin can be finished in any colour you wish, perhaps even a unique colour created to your own specification. To explore the full range of exterior and interior colours, materials and finishes offered visit the official Aston Martin online configurator at [www.astonmartin.com/configure](http://www.astonmartin.com/configure)

## BRIGHT OR BLACK OPTIONS

Elegant or assertive  
The choice is yours

Bright finish grille (standard)



Magnum Silver bonnet vents



Chrome finish tailpipe (standard)



Black finish grille

Black bonnet vents

Black textured tailpipe

### Bright

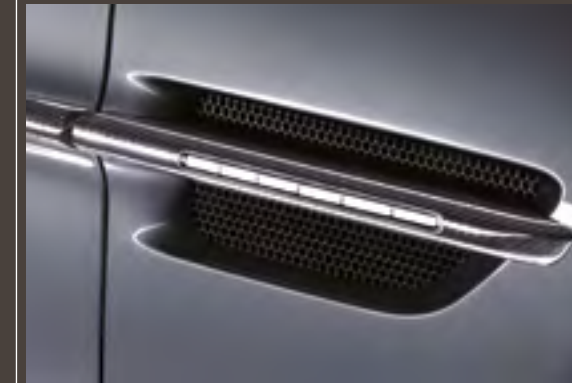
If you desire a classic, elegant look for your Vanquish, the combination of standard Bright finish grille and Titanium or optional Magnum Silver bonnet and side strake meshes are beautifully understated.

### Black

For a more assertive look, Vanquish is also available with a Black finish grille, which can be complemented by Black bonnet and side strake meshes. The standard chrome finish exhaust tips can also be specified with a Black textured finish.

## CARBON FIBRE OPTIONS

Side strakes



Roof



Side mirrors



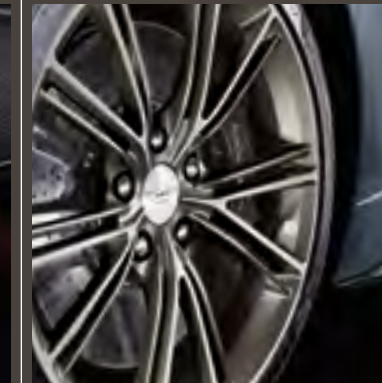
Door handles

Our range of carbon fibre options enables you to make subtle clues or bold references to the hi-tech material from which Vanquish's bodywork is formed.

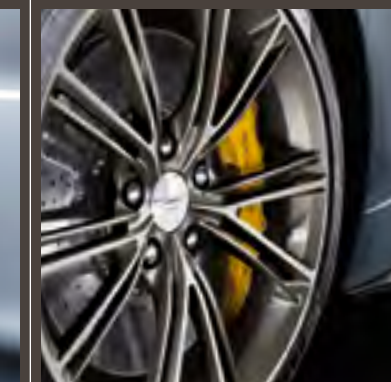
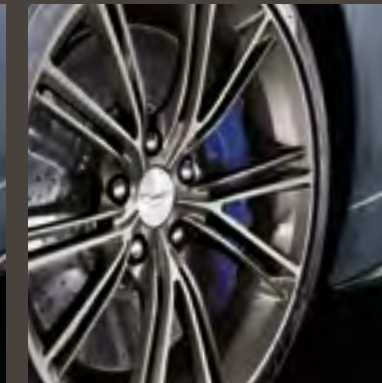
## COLOURED CALIPERS

PERSONALISATION

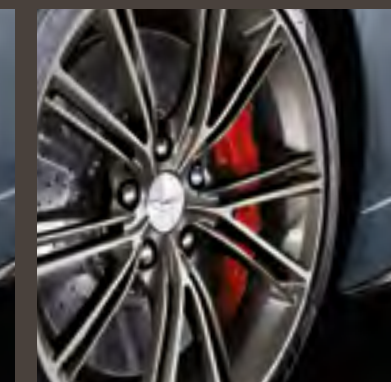
Black



Blue



Yellow



Red

Add a highlight colour with a selection of caliper options (Grey calipers are standard).

## WHEEL OPTIONS

10-spoke cast alloy wheels

20-spoke forged alloy wheels

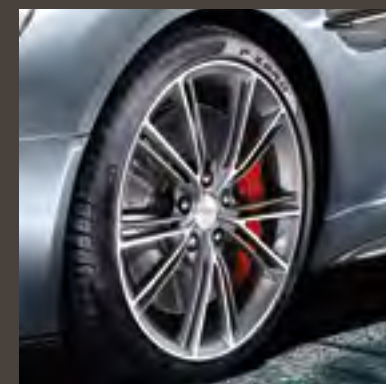
Silver painted (standard)

Liquid Silver painted



10-spoke forged alloy wheels

Silver painted with diamond-turned finish and Spun cap



Graphite painted

Graphite painted with diamond-turned finish

Gloss Black painted with diamond-turned finish

Gloss Black painted with diamond-turned finish and Spun cap

Satin Black painted with diamond-turned finish and Spun cap

### Standard 20" 10-spoke alloy wheels

As standard, Vanquish is fitted with elegant 10-spoke alloy wheels, designed as a modern interpretation of the classic V12 Vanquish wheel. Finished in silver as standard, this wheel design is also available in an optional graphite finish.

### Optional 20" 20-spoke alloy wheels

Available as an option is a forged, lightweight 20-spoke alloy wheel design. The character of the wheel changes dramatically depending on the selected finish: diamond-turned accents emphasise the 'V' design on the graphite, Gloss Black, and Satin Black finishes, while the Silver painted and Liquid Silver finishes offer a more understated appearance.

### Optional 20" 10-spoke alloy wheels

The optional 10-spoke alloy wheels create a dramatic impression of Vanquish's performance potential and, by reducing unsprung mass, enhance the already supreme dynamics. Diamond-turned and available in classic silver, modern gloss black or aggressive satin black.

## INTERIOR OPTIONS

Centre stack facia in Piano Black



Personalised sill plaques



One-77 leather steering wheel



Centre stack facia in Herringbone carbon fibre



Full carbon fibre gearshift paddles



Luxmill leather steering wheel

The tactile quality of Vanquish can be tailored to offer classic luxury or heighten the sporting aesthetic. An extensive range of trim finishes, from indulgent Piano Black to dynamic carbon fibre, and a vast palette for leather and carpet hues combine to offer unrivalled personalisation. Right down to bespoke sill plaques, Vanquish can perfectly reflect your individual style.

# ACCESSORIES

## INTERIOR

Luggage sets



Leather saddle



Saddle leather floor mats



Leather ECU pouches

Veneer centre consoles

Boot mat

Luggage sets

Exclusively handcrafted in England for Aston Martin, luggage sets are available in tan saddle leather, black nubuck leather and black sport performance fabric. A four piece set is available for Vanquish Volante and a six piece set for Vanquish Coupe.

Leather saddle

Handmade by a master saddle maker, this exquisite and elegant storage solution offers both fixed and detachable compartments for personal items such as CDs, maps and phone accessories.

Saddle leather floor mats

Handcrafted from premium English lambswool carpet with fine saddle leather edging, available in Obsidian Black or Conker Brown.

Leather ECU pouches

High quality leather pouches for keeping and protecting your glass ECU. Available in a range of popular colours with an optional matching presentation box.

Veneer centre consoles

An exclusive Q by Aston Martin Accessory, these Vanquish wood veneer centre console panels are available in either a Walnut or Mahogany finish.

Boot mat

Premium boot mats featuring embroidered Aston Martin wings and leather bound edges.

# PERSONALISATION

## EXTERIOR

Indoor car covers



Carbon fibre exhaust tips



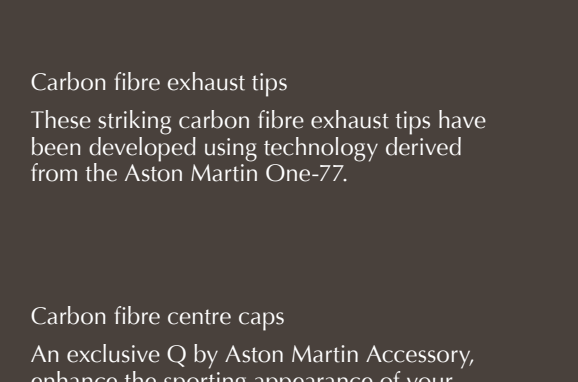
Red carbon fibre



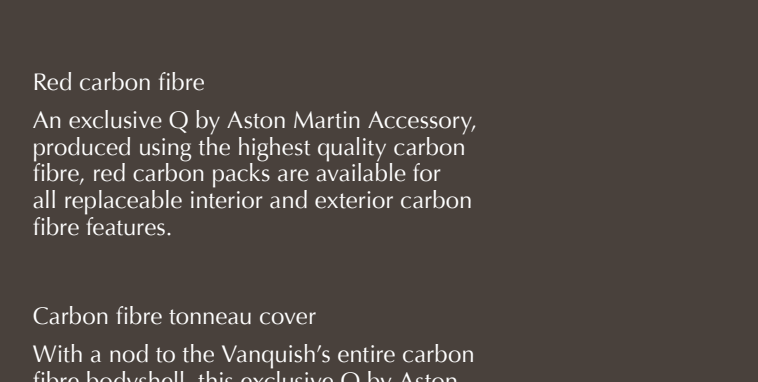
Ultimate car covers



Carbon fibre centre caps



Carbon fibre tonneau cover



Indoor car covers

Tailored, fully breathable soft cotton mix indoor car covers with a protective fleece lining, featuring the Vanquish logo.

Carbon fibre exhaust tips

These striking carbon fibre exhaust tips have been developed using technology derived from the Aston Martin One-77.

Red carbon fibre

An exclusive Q by Aston Martin Accessory, produced using the highest quality carbon fibre, red carbon packs are available for all replaceable interior and exterior carbon fibre features.

Ultimate car covers

Durable, breathable and weather resistant ultimate car covers made from knitted polyester with a Teflon® coating, allowing water to 'bead' and run off.

Carbon fibre centre caps

An exclusive Q by Aston Martin Accessory, enhance the sporting appearance of your Vanquish with these technical and exquisitely crafted carbon fibre wheel centre caps.

Carbon fibre tonneau cover

With a nod to the Vanquish's entire carbon fibre bodyshell, this exclusive Q by Aston Martin Accessory is constructed from the highest quality lightweight carbon fibre.



## SPECIFICATIONS

### Body

- Two-door Coupe body style with 2+0 seating or Volante body style with 2+2 seating
- Extruded aluminium and carbon fibre bonded VH body structure
- Carbon fibre body panels
- Lightweight multi-layer Volante fabric roof
- Cast-magnesium door structures
- Single bi-xenon headlamps with integrated LED side lights and direction indicators
- LED light blade tail-lamps
- Exposed carbon fibre splitter, diffuser and sill blade

### Engine

- All alloy quad overhead cam 48-valve 5935 cc V12
- Front mid-mounted engine, rear-wheel drive
- Fully catalysed stainless steel exhaust system with cross pipes
- Compression ratio 11:1
- Dual variable camshaft timing
- Knock-sensing
- Fully CNC machined combustion chambers
- Maximum power 424 kW (568 bhp / 576 PS) at 6650 rpm
- Maximum torque 630 Nm (465 lb ft) at 5500 rpm
- Coupe acceleration 0-60 mph in 3.6 seconds 0-100 km/h in 3.8 seconds
- Volante acceleration 0-60 mph in 3.8 seconds 0-100 km/h in 4.0 seconds
- Coupe maximum speed 201 mph (323 km/h)
- Volante maximum speed 197 mph (317 km/h)

### Fuel Consumption – Litres/100 km (mpg)

- Urban 19.3 (14.6)
- Extra urban 9.1 (31.0)
- Combined 12.8 (22.1)

### North America Gas Mileage

- City 13 US mpg
- Highway 21 US mpg
- Combined 16 US mpg

### CO2 emissions

- 298 g/km

### Transmission

- Rear mid-mounted ‘Touchtronic III’ 8-speed automatic gearbox with electronic shift-by-wire control system
- Alloy torque tube with carbon fibre propeller shaft
- Limited-slip differential
- Final drive ratio 2.73:1
- Launch control

### Steering

- Steering rack with 15:1 steering ratio
- Speed-dependent rack and pinion power-assisted steering,
- 2.6 turns lock-to-lock
- Column tilt and reach adjustment

### Wheels & Tyres

- 20” 10-spoke silver painted alloy wheels
- Front Pirelli P-Zero 255/35 ZR20
- Rear Pirelli P-Zero 305/30 ZR20

### Suspension

- Front independent double wishbone, coil springs, anti-roll bar and adaptive dampers
- Rear independent double wishbones, coil springs, anti-roll bar and adaptive dampers
- 3-stage Adaptive Damping System (ADS) with Normal, Sport and Track modes

### Brakes

- Front ventilated CCM brake discs 398 mm diameter with six-piston calipers
- Rear ventilated CCM brake discs 360 mm diameter with four-piston calipers
- 3-stage Dynamic Stability Control (DSC)
- Anti-lock braking system (ABS)
- Electronic Brakeforce Distribution (EBD)
- Emergency Brake Assist (EBA)
- Traction Control (TC)
- Hydraulic Brake Assist (HBA)
- Positive Torque Control (PTC)

### Weights and Dimensions

- Length 4692 mm (184.7”) 4728 mm (186”) (including number plate plinth)
- Width 1912 mm (75.2”) (excluding door mirrors)
- 2067 mm (81.3”) (including door mirrors)
- Height 1294 mm (50.9”)
- Wheelbase 2740 mm (107.9”)
- Fuel tank capacity 78 litres (17.2 Imp. Gal. /20.5 US Gal)
- Coupe Weight: 1739 kg (3834 lb) and Volante weight 1844 kg (4065 lb)
- Weight Distribution 51%/49% (Front/Rear)

### Standard Specification – Interior

- Full-grain Luxmill leather interior
- Alcantara® headlining on Coupe and Rökona and Alcantara® headlining on Volante
- Electrically operated front seats with side airbags
- Memory front seats and exterior mirrors (three memory positions)
- Coupe 2+0 seating configuration with flexible rear environment storage, Volante 2+2 seating configuration
- Satin chrome jewellery pack
- Powerfold exterior heated mirrors
- Front and rear parking sensors
- Cruise control
- Tyre pressure monitoring
- Alarm and immobiliser
- Remote control central door locking and boot release
- Automatic temperature control
- Heated front seats
- Curtain side head airbags
- Dual stage driver and passenger front airbags
- Pelvis and thorax seat mounted airbags
- Seat belt dual pre-tensioners and digressive load limiters
- Trip computer
- Aston Martin tracking by Cobra (UK only) <sup>1,3,5</sup>
- Laminated windscreen with clear noise-insulation layer
- Glass ECU
- Titanium bonnet and side strake meshes
- Bright aluminium front grille
- Chrome side strakes and tailpipe trim
- Heated rear screen
- Black gearshift paddles with colour-keyed leather trim
- Rear parking assist camera

### In-car Entertainment

- 1000-watt Bang & Olufsen BeoSound 13-speaker audio system
- Infotainment System (AMi) with capacitive switching
- Hard Disk Drive (HDD) satellite navigation <sup>1,2</sup>
- 6.5” LCD Screen
- DAB radio <sup>1</sup>
- AM/FM radio <sup>1</sup>
- USB connector with Waveform Audio Format (WAF), Windows Media Player (WMA) and MPEG (MP3) audio file compatibility
- A2DP Bluetooth® audio

### Optional Equipment – Exterior

- Alternative brake caliper finish - Black, blue, yellow and red brake calipers
- 10-spoke cast alloy wheels - Graphite painted
- 20-spoke forged alloy wheels – - Liquid Silver painted - Silver painted with diamond-turned finish - Graphite painted with diamond-turned finish
- Gloss Black painted with diamond-turned finish
- 10-spoke forged alloy wheels – - Silver painted with diamond-turned finish - Gloss Black painted with diamond-turned finish - Satin Black painted with diamond-turned finish
- Black vaned grille
- Magnum Silver or Black Mesh finish
- Black textured tailpipe
- Exposed carbon fibre roof panel <sup>6</sup>
- Exposed carbon fibre door mirror caps
- Exposed carbon fibre side strakes
- Exposed carbon fibre door handles
- Protective film

### Optional Equipment – Interior

- Black Luxmill leather part Alcantara® steering wheel <sup>6</sup>
- Colour-keyed Luxmill leather steering wheel
- Black One-77 leather steering wheel with black Alcantara® inserts <sup>6</sup>
- Colour-keyed One-77 Leather Steering wheel with Obsidian Black leather inserts
- Centre stack fascia in carbon fibre 2x2 Twill, Piano Black, Herringbone carbon fibre, Piano Red and Piano Ice Mocha
- Headrest embroidery – Aston Martin Wings or Vanquish logo
- Black hardware pack
- Full carbon fibre gearshift paddles
- Shadow bronze jewellery pack
- Personalised sill plaques
- Auto-dimming mirror with garage door opener
- Heated and ventilated seats
- Perforated leather door inserts
- Smokers’ pack
- Second glass ECU
- Aston Martin tracking by Cobra <sup>1,3,5</sup>
- Alarm upgrade (Volumetric and tilt sensors)
- Toolkit
- 6-CD auto-changer
- First aid kit

### 1 Not available in all markets

2 Includes traffic messaging channel (TMC) in Continental Europe

3 Complies with UK Thatcham Category 5 requirements. Excludes subscription. Standard in UK

4 iPod® is a trademark of Apple Inc., registered in the US and other countries

5 Cobra is a registered trademark of Cobra Automotive Technologies SpA.

6 Not available on Volante



# Q BY ASTON MARTIN





AN ASTON MARTIN THAT REFLECTS YOU...

Q by Aston Martin is our unique personalisation service, for an Aston Martin that truly reflects you. It can take you on a journey of inspiration through the world of art, design and craft, to distant lands or favourite places, soaking up the character of objects, materials, colours, and textures – translating them all into key elements of your own car. Q by Aston Martin is only bound by the limits of imagination.

Q is our way of synthesising your individual vision with our skills and expertise and you will work with our award winning design team to achieve a unique and bespoke look and feel for your car. The goal is to create your Aston Martin. Welcome to the world of Q.



## WORKING WITH YOUR DEALERSHIP

With 151 dealerships in 44 countries around the world, Aston Martin has a global presence to match its reputation as maker of some of the world's most coveted and recognisable cars. All our showrooms and service centres reflect the prestige and exclusivity associated with the Aston Martin brand, ensuring your ownership experience begins as soon as you enter the showroom. Staffed by passionate, highly trained sales people and technicians, all your needs are catered for. From expert guidance through the specification and ordering process to the unique peace of mind that comes from having your cherished car meticulously maintained by skilled specialists, our dealerships are at your disposal.

### Warranty

Your new Aston Martin is meticulously produced and as such benefits from a three year unlimited mileage Vehicle Warranty and a ten year unlimited mileage Anti Perforation Corrosion Warranty. During this period any necessary repairs would be carried out by approved technicians to the highest standard using only Genuine Parts. After three years Aston Martin offer an Extended Warranty for total peace of mind.\*

### Servicing

With an Aston Martin service you can be assured that your car is in the safest hands. Our approved service technicians are qualified to the highest standards and regularly receive training on new products and practices to ensure the very best service. Only Genuine Aston Martin Parts are used and all of our work comes with a 12 month warranty. Free checks for software and mechanical updates are included.

### Accessories

Our range of genuine accessories has been carefully designed to complement, enhance and personalise your Aston Martin. Whatever your taste and choice, you are guaranteed superb craftsmanship and the attention to detail that only Aston Martin designers and engineers can deliver. Whether you want to bring your Aston Martin up-to-date, or simply impart a sense of your own personality and style, our range of interior and exterior updates for all current models will help you achieve it.

### Parts

Every Aston Martin is a masterpiece, precision engineered to give you the ultimate driving experience. We are dedicated to preserving that unique sensation now and forever. That is why we supply over 70,000 Genuine Parts for models built between 1959 and the present day through our global network of Aston Martin Dealers. So whether you drive a DB5 or a DB9, your Aston Martin's performance and dynamism can be timeless. All parts are covered by a 12-month warranty.



\*Extended Warranty package differs by region, speak to your preferred Dealer for more information

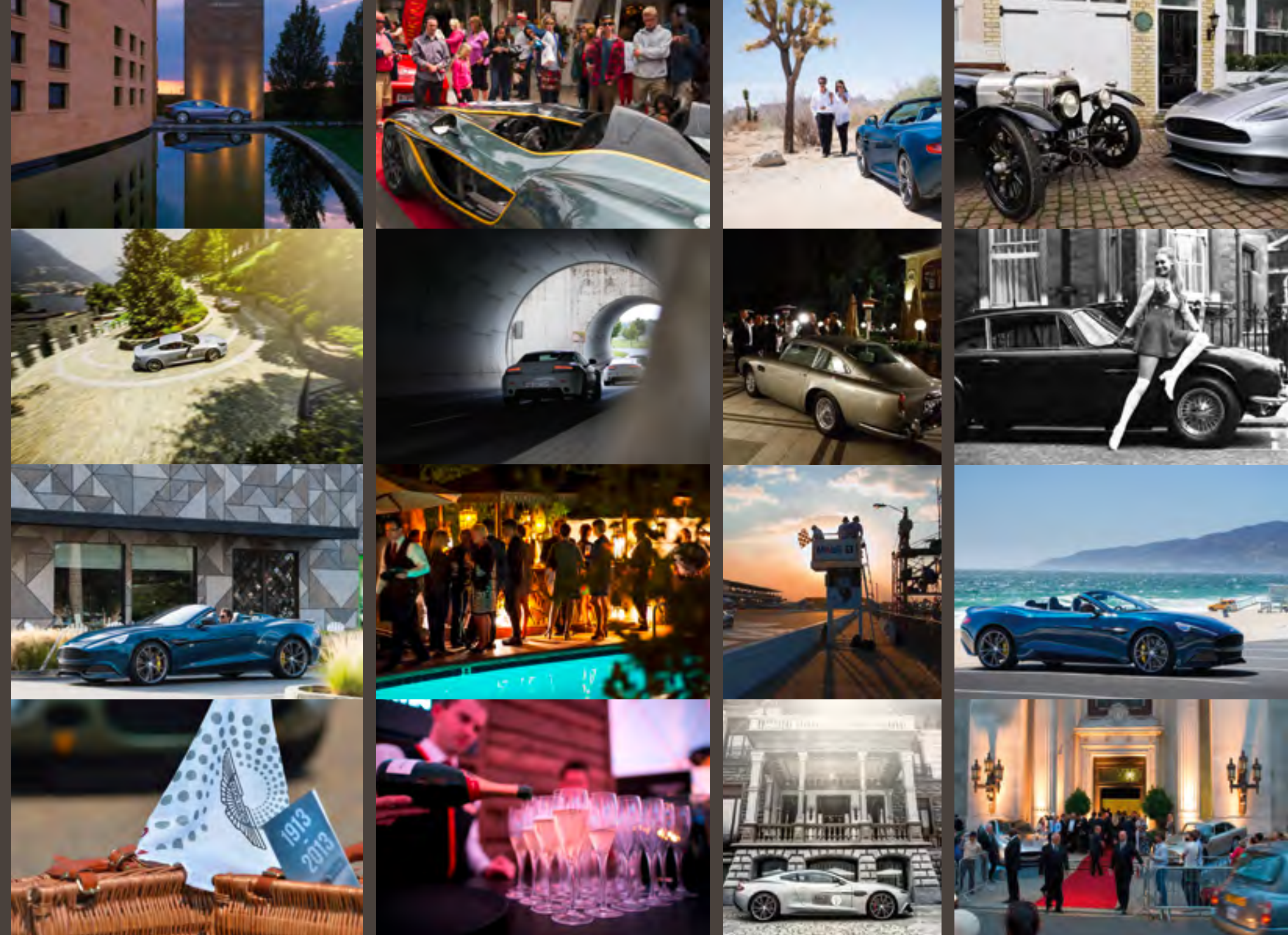
WHEN YOU BECOME AN ASTON MARTIN OWNER, YOU ACQUIRE SO MUCH MORE THAN A FABULOUS CAR; YOU JOIN A GLOBAL FAMILY OF PASSIONATE LIKE-MINDED INDIVIDUALS, UNITED BY AN APPRECIATION OF THE INIMITABLE STYLE AND INHERENT CLASS THAT DISTINGUISHES AN ASTON MARTIN FROM ANY OTHER CAR.

## ASTON MARTIN LIFE

This passion is shared by all of us at Aston Martin. We are proud of our heritage and of the fact that more than 85% of all Aston Martins ever built are still in existence and being enjoyed by their owners. Above all, we want you to cherish driving your car and join the Aston Martin family. To help achieve those aims we host a fabulous range of Aston Martin driving experiences and events around the world.

At these events, organised by your dealer or by Aston Martin, you will drive your or our cars, meet like-minded Aston Martin

enthusiasts, and sample some of the finer things in life. Whether you crave the adrenalin rush of driving as fast as you dare around one of the world's great race circuits, long for the more leisurely delights of our luxury tours, or are intrigued by the novelty of powering around a special course carved into the snow and ice of an alpine resort, you can be sure of one thing: Aston Martin ownership is an experience like no other.







## IMPORTANT NOTICE

### Pictures and word mark

The cars illustrated in this brochure may include additional options not featured in this brochure or that are only available at extra cost.

### Updates

Aston Martin Lagonda Limited is constantly seeking ways to improve the specification, design and production of its cars and alterations take place continually. Whilst every effort is made to produce up-to-date literature about our evolving products, this brochure should not be regarded as a guide to any currently available products, options, accessories or specifications, nor does it constitute any offer for sale of any particular car, product, option, accessories and/or services or combination of the same.

This brochure is merely an indication of the kinds of Aston Martin products and services which may be available from time to time. The contents of this brochure represent Aston Martin Lagonda Limited's business as a whole. Text and photographs in this brochure may relate to specifications, options, accessories and/or services that are not available for sale in some countries or which have been superseded or are otherwise no longer available. Images shown may not be reflective of the final car.

### Performance results

Performance results, fuel consumption figures and CO2 emissions data quoted in this brochure are obtained under controlled test conditions (in accordance with applicable regulations) and may vary depending on the specification of the particular car, road and environmental conditions and driving style. Tyre choice may also impact on performance results, fuel consumption, CO2 emissions, ride comfort and handling.

Published figures should be used for comparison purposes only and verification should not be attempted on public roads. No guarantee is given, expressed or implied of performance results, fuel consumption or CO2 emissions.

Aston Martin Lagonda Limited strongly urges that all speed laws be obeyed and that safety belts be worn at all times.

The weight of the car will influence the level of CO2 emitted and as a result, cars with higher levels of specification and factory fit options may emit higher levels of CO2. However, Vehicle Excise Duty is charged according to the weight of and CO2 emissions of the standard car, as published in this brochure.

All petrol engines are fitted with a catalytic converter.

### Copyright and other intellectual property rights

This brochure and its contents are protected by various intellectual property rights, including without limitation, copyright, design rights and trademarks, that are owned or licensed by Aston Martin. You may not copy or use this brochure or any of its contents for any commercial purpose without our prior written consent.

### Distributors and dealers

Distributors and dealers are not agents of Aston Martin Lagonda Limited and have absolutely no authority to bind Aston Martin Lagonda Limited by any express or implied undertaking or representation. Sales by dealers or agents are subject to their terms and conditions of sale.

### Company details

Aston Martin Lagonda Limited (company number 01199255) has its registered office at Banbury Road, Gaydon, Warwickshire CV35 0DB, England. Telephone +44(0)1926 644644 VAT Number 904 447 237

[www.astonmartin.com](http://www.astonmartin.com)

Part No: 706364

### Design and production

Identity Ltd (London)

### Location and studio photography

Julian Calverley  
Staud Studios  
Dominic Fraser





ASTON MARTIN

[WWW.ASTONMARTIN.COM](http://WWW.ASTONMARTIN.COM)