



THE NEW 2016 CATCH IT IF YOU CAN



ACURA



ILX

FEATHERWEIGHT CONTENDER



POWER

Beauty meet beast. The impressive 201-hp, 2.4-liter, i-VTEC® engine in the ILX gives it one of the best power-to-weight ratios in its class,* making you more nimble and quick on the road.

ILX with Technology Plus and A-SPEC® Package shown.

*Based on Acura Vehicle Segmentation, Small Luxury as of 1/10/14. Standard horsepower and weight based on manufacturer's data.



DELAY IS THE ENEMY

TRANSMISSION

New to the ILX is a world's first 8-speed Dual-Clutch Transmission (DCT) with torque converter. The 8-speed DCT is always a step ahead, delivering rapid yet smooth transitions. Lightning-quick responses quicker than you can say "shift."

CONTROL FREAK



PADDLE SHIFTERS

Race-inspired control. Up- or downshift and take full advantage of the quick-reacting Dual-Clutch Transmission. With paddle shifters on all trims, you'll experience total control and a more direct connection to the car.

A close-up photograph of the front left corner of a blue Acura ILX. The image features a multi-spoke alloy wheel with a silver and black finish, a Continental tire, and a portion of the car's headlight assembly. The Acura logo is visible on the center of the wheel. The background is a blurred asphalt surface.

WELL ADJUSTED

SUSPENSION

React to the road ahead. The ILX is equipped with amplitude reactive dampers that give you the best of whatever the situation demands. They operate in two unique performance zones, offering both a composed, comfortable ride and precise handling.

FLEX YOUR REFLEXES



RESPONSIVE HANDLING

Whether on the track or on the street, we apply the same focused passion toward creating vehicles that deliver superior performance that is technically audacious and reassuringly precise.



READY.
SET.
GONE.

JEWEL EYE
LED HEADLIGHTS

Experience technology that mimics the natural color temperature of the sun. Jewel Eye® LED headlights come standard on all trims of the ILX, allowing every driver to experience colors more vividly and help reduce fatigue when driving at night.



ILX with Technology Plus and ASPEC® Package shown.

INTERIOR/EXTERIOR DESIGN

The redesigned ILX comes with standard Jewel Eye LED headlights and LED taillights—an aggressive style to match the confidence you feel behind the wheel.



Accessory 18-inch diamond-cut alloy wheels shown.



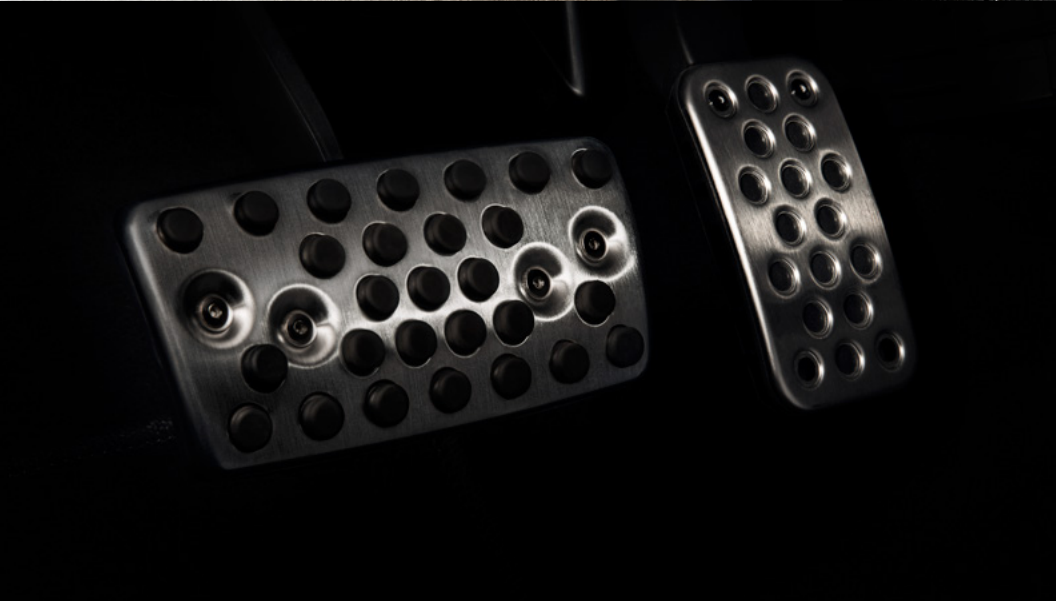


LOOKS ARE EVERYTHING



A-SPEC

The A-SPEC® appearance package gives the ILX an even sportier look, with brilliant fog lights, machine-finished 18-inch wheels, side sills, and a rear spoiler. The interior look is complete with stainless steel sport pedals, red instrument illumination, suede-trimmed sport seats, a black headliner, and contrast stitching.





DRIVE
LIKE
DYNAMITE

DIRECT INJECTION

The direct-injection system in the ILX delivers fuel pressurized at up to 2,900 psi, giving the engine more power and better efficiency.

ILX with Technology Plus and A-SPEC Package shown.

HEAR

NO

EVIL



QUIET CABIN

With Active Sound Control to help cancel out unwanted engine sounds and standard noise-reducing wheels to cut resonance, the ILX is perfect for when you want to get away.



THE WORLD IS AT YOUR FINGERTIPS



ACURALINK

At your service. Acuralink® can send destination information directly to your car and reroute your journey based on street and freeway conditions. Stream your favorite Web content and drive with confidence knowing you have access to 24/7 Enhanced Roadside Assistance, our Stolen Vehicle Locator, and even your own personal concierge. Not near your car? No problem. The Connect app acts as a remote and tool for diagnostics. Lock and unlock your car and check tire pressure and fuel level, all from the convenience of an app.¹



"Call me when you get a chance."

"Here's the weather forecast for the weekend."

"Meeting invite for 3 p.m."

SIRI® EYES FREE

Run away with your personal assistant. Using your compatible iPhone®, you can read and respond to incoming texts and emails, set reminders and alarms, get turn-by-turn voice navigation, and even check the weather—all without taking your eyes off the road.²

REEXPERIENCE SOUND

AUDIO SYSTEM

Developed by Grammy Award-winning music producer Elliot Scheiner, Acura's available ELS Studio® Premium Audio System transforms your vehicle into a personal soundstage, whether it's Aha,™ Pandora,® SiriusXM,® HD Radio,® or Bluetooth® audio. Between the studio-grade equipment and the ILX's purposefully quiet cabin, enjoy extended frequency range, lower distortion, enhanced clarity, and transparency to create an audio experience like no other.





Acura Navigation with 3D view

Make every turn a shortcut. The ILX's available navigation system gathers street and freeway information to dodge traffic and reduce stress.³ Available iPhone Navigation Link acts as an alternative to embedded navigation, seamlessly transferring map information from your iPhone to your vehicle's navigation screen. Simply download the AcuraLink Navigation app for a cost-effective way to keep your eyes on the road ahead.⁴



ACURA



ACURA

VOL PUSH



ODMD™

Your touch is our command. The On Demand Multi-Use Display™ gives you the ability to adjust climate control settings and select preferred audio, including Aha, Pandora, and SiriusXM Radio, all on an easy-to-use touch screen with haptic feedback.



THE



SCIENCE

OF

SAFE



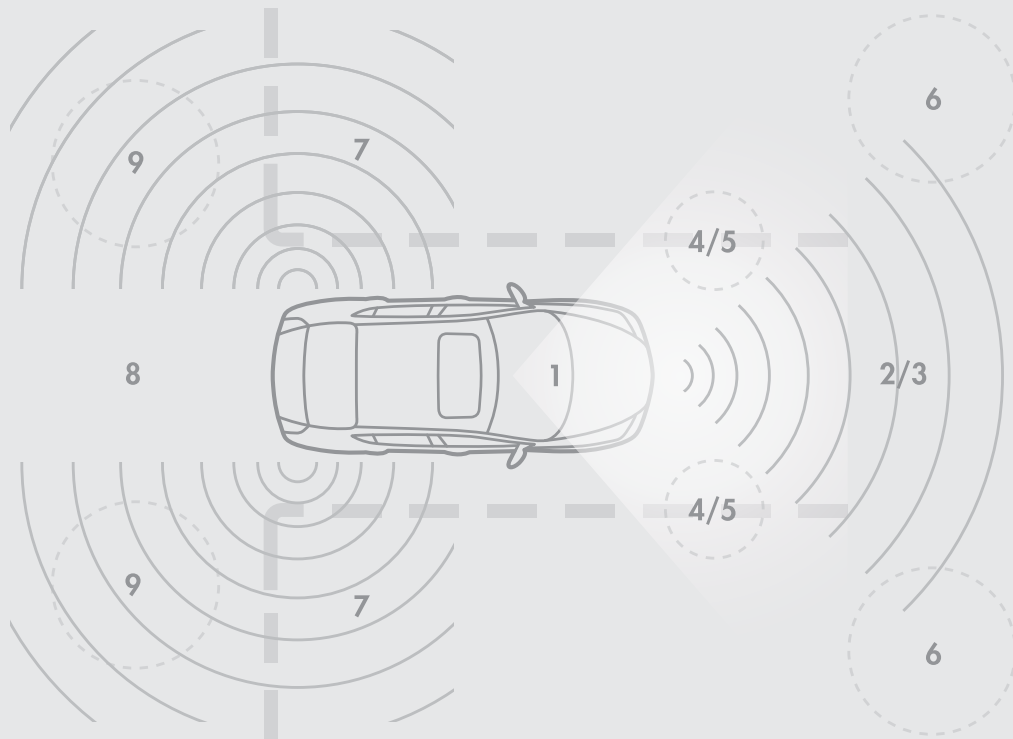
ACE™ BODY STRUCTURE

Strength from within. Acura's Advanced Compatibility Engineering™ body structure is designed to absorb and more evenly distribute energy from frontal impacts, regardless of how big or small the other vehicle is. So in the case of a frontal impact, energy is transferred around the vehicle and away from passengers to help minimize injury.



ALL
EYES
ON
DECK





- 1 - Forward Collision Warning system (FCW)
- 2 - Adaptive Cruise Control (ACC)
- 3 - Collision Mitigation Braking System™ (CMBS™)
- 4 - Lane Departure Warning system (LDW)
- 5 - Lane Keeping Assist System (LKAS)
- 6 - Road Departure Mitigation System
- 7 - Blind spot information system (BSI)
- 8 - Multi-View Rear Camera
- 9 - Rear Cross Traffic Monitor

ACURAWATCH

Available advanced driver assistance features are designed to watch the road around you, offer warnings, and even take action when you need it. Systems can even help keep you in the center of a detected lane if you begin to drift. AcuraWatch™ is designed to help minimize threats—and stress—no matter where you're headed.



- 201-hp, 2.4-Liter, 16-Valve, DOHC i-VECTEC® Direct-Injection 4-Cylinder Engine
- 8-Speed DCT (Dual-Clutch Transmission) with Sequential SportShift Paddle Shifters
- 17-Inch, Noise-Reducing, Alloy Wheels
- Advanced Compatibility Engineering™ (ACE™) Body Structure
- Jewel Eye® LED Headlights
- Dual-Zone, Automatic Climate Control System with Humidity Control and Air Filtration
- Multi-View Rear Camera
- Siri® Eyes Free
- Power Moonroof

ILX WITH ACURAWATCH PLUS PACKAGE (adds to standard features)

- Adaptive Cruise Control (ACC)
- Collision Mitigation Braking System™ (CMBS™)
- Road Departure Mitigation System
- Forward Collision Warning (FCW) System
- Lane Departure Warning (LDW) System
- Color Multi-Information Display (MID)

ILX WITH PREMIUM PACKAGE (adds to standard features)

- Perforated Leather-Trimmed Interior
- Blind spot information (BSI) system
- Rear Cross Traffic Monitor
- On Demand Multi-Use Display™ (ODMD™)
- iPhone® AcuraLink® Navigation App Connectivity
- Driver's Memory Seat
- Front Passenger's 4-Way Power Seat

ILX WITH TECHNOLOGY PLUS PACKAGE

(adds to or replaces AcuraWatch™ Plus and Premium Package features)

- Acura Navigation System with 3D View
- AcuraLink Real-Time Traffic™ with Exclusive Street and Freeway Conditions
- Next-Generation AcuraLink®
- Acura/ELS Studio® Premium Audio System with 10 Speakers
- Song By Voice®

A-SPEC® PACKAGE (available with Premium or Technology Packages)

- Sport Seats with Ebony Suede-Trimmed Interior and Contrast Stitching
- Ebony Headliner
- Aluminum Sport Pedals
- Body-Colored Side Sills and Trunk Spoiler
- Fog Lights
- 18-inch Machine-Finished, Noise-Reducing, Alloy Wheels

©2015 Acura. Acura, ILX, the stylized "A" logo, AcuraLink, AcuraLink Real-Time Traffic, AcuraWatch, Advanced Compatibility Engineering (ACE), Jewel Eye, On Demand Multi-Use Display (ODMD), Traffic Reouting, and i-VECTEC are trademarks of Honda Motor Co., Ltd. Covered by patent rights issued and/or pending. Specifications, features, illustrations, and equipment shown in this catalog are based on the latest available information at the time of publication. Although descriptions are believed to be correct, accuracy cannot be guaranteed. All images contained herein are either owned by American Honda Motor Co., Inc., or used under a valid license. It is a violation of Federal law to reproduce these images without express written permission from American Honda Motor Co., Inc., or the individual copyright owner of such images. American Honda Motor Co., Inc., reserves the right to make changes at any time, without notice or obligation, in colors, specifications, accessories, materials, and models. Aha, the Aha logo, and the Aha trade dress are trademarks or registered trademarks of Harman International Industries. The Bluetooth® word mark and logos are owned by the Bluetooth SIG, Inc., and any use of such marks by Honda Motor Co., Ltd., is under license. ELS Studio is registered trademarks of Panasonic Corporation of North America. All rights reserved. GRAMMY is a registered trademark of The Recording Academy and is used under license. Siri®, iPhone®, and iPod® are registered trademarks of Apple, Inc. Pandora, the Pandora logo, and the Pandora trade dress are trademarks or registered trademarks of Pandora Media, Inc. Used with permission. ©2015 Sirius XM Radio, Inc. Sirius, SiriusXM, the XM name, XM NavTraffic, and NavWeather are trademarks of XM Satellite Radio, Inc. Make an intelligent decision. Fasten your seat belt. **1** Certain AcuraLink services are available only where compatible cellular and GPS coverage is available. Subscription agreement required to enroll and terms and conditions of subscription agreement apply to services. Standard text rates and/or data usage may apply to communications received by email or SMS/text message. Visit your dealer or acura.com/acuralink for more information on standard and available features. **2** Siri® Eyes Free is available on iPhone® 4s or later, iPad® with Retina® display, iPad mini™, and iPod touch® (5th generation) with iOS 6 or later and requires Internet access. Siri® may not be available in all languages or in all areas, and features may vary by area. Cellular data charges may apply. Some features may not be available for all countries or all areas. **3** Three-year subscriptions for AcuraLink Real-Time Traffic and Traffic Reouting are included with new car purchase. See your Acura dealer for system and coverage details. **4** AcuraLink Navigation App requires iPhone 5 or later with iOS 8 or later, the AcuraLink Navigation app/iOS cable kit, and Internet access. For information on setting up the AcuraLink Navigation App, phone compatibility, and additional FAQs, please visit: <https://acuralink.acura.com> or call 800-382-2238.



Ready. Set. Gone.
To explore current offers and build
your own 2016 ILX [click here.](#)