

RLX

310-HP V-6

3.5-Liter, 24-Valve, SOHC i-VTEC Direct-Injection Engine

10-Speed

Automatic Transmission with Sequential SportShift Paddle Shifters

P-AWS

Precision All-Wheel Steer System

MPG Ratings¹²

City	Highway	Combined
20	30	23

RLX SPORT HYBRID SH-AWD

377 System-Combined HP
341 System-Combined Torque

3.5-Liter, 24-Valve, SOHC i-VTEC Direct-Injection Engine Plus Electric Front-Drive Motor and Rear Electric Twin Motor Unit

7-Speed DCT

Dual-Clutch Transmission with Sequential SportShift Paddle Shifters

MPG Ratings¹²

City	Highway	Combined
29	30	29



PRECISION CRAFTED PERFORMANCE

RLX

PRECISION CRAFTED PERFORMANCE

When Precision Crafted Performance is at the heart of everything you create, you build the car you want to drive. You don't make assumptions; you make a sedan your way. The RLX does more than just express Precision Crafted Performance—it defines it.

Personality matters. The RLX embodies sophistication with attitude, style with substance, and an impressive presence. This is an invitation to make your own rules.





RLX Sport Hybrid SH-AWD with Advance Package shown in Fathom Blue Pearl.

SAME BADGE, NEW

ATTITUDE

Inspired by the Acura Precision Concept, the new RLX was reimagined to reflect Acura vehicles' bold and distinctive future. Highlighted by our new Diamond Pentagon Grille, it features a low, wide stance that prioritizes precision handling. The aggressively redesigned RLX delivers a modern look that speaks to the exhilarating performance to be had behind the wheel.



LOW, LEAN & MEAN

Modern design meets machine. Both artistic and muscular in nature, with bold sculpted lines, the RLX blends all-new styling and sophistication with Acura performance. The RLX has a low, athletic stance, a new sculpted hood and fenders, a Diamond Pentagon Grille, an integrated rear diffuser, and exposed exhaust finishers.



JEWEL EYE LED HEADLIGHTS

Jewel Eye® LED headlights provide intense light without blinding oncoming traffic and offer you excellent visibility—not just in overall distance, but in width and consistency. The light's color mimics sunlight, for less eye fatigue while driving at night, and allows you to see colors more vividly.

ATTRACTIVE FROM
THE INSIDE OUT



We believe a car should respond instantly and instinctively to the driver's will. With innovative technologies such as world's-first Precision All-Wheel Steer,[™] an all-new 10-speed automatic transmission, and available Sport Hybrid Super Handling All-Wheel Drive,[™] the RLX delivers a direct connection to both car and road.

TAKE ON

ANY ROAD



INTERIOR DESIGN

**GREAT DESIGN ISN'T A
LOOK, IT'S AN EXPERIENCE**

Each layer of detail reflects Acura's human-centered design philosophy. The RLX offers an ergonomic cockpit design, where everything is centered on the driver's needs. Sink into the luxe seat with high-contrast stitching and piping and enjoy the tri-zone climate control.

The meticulously tailored interior affords both driver and passengers the ultimate in personal space, as the RLX is among the top of its class for rear legroom.

P - AWS

THE FUTURE OF STEERING

Precision All-Wheel Steer (P-AWS®) takes advantage of untapped steering potential from the rear wheels. The system intuitively supports the driver and responds to steering input with immediate adjustments. This world's-first, intelligent system adjusts the steering angle of each rear wheel independently, for increased agility and stability in corners, while changing lanes, and during braking. The result is a system that delivers unprecedented levels of handling precision and performance.*

*P-AWS not available on Sport Hybrid SH-AWD models.

RLX with Technology Package shown in Majestic Black Pearl.



SUPERCAR DNA

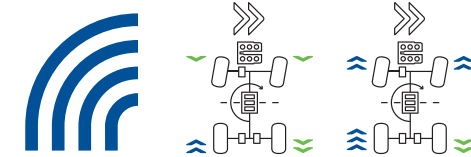
For thirty years, we've pushed the confines of what's possible to extract every last drop of performance out of our cars, and Sport Hybrid Super Handling All-Wheel Drive is the latest result of that ambition. The system, which contains the same technology found in the NSX, supplies supercar-inspired performance, and while other manufacturers are still dreaming about it, it's in the reimagined Acura RLX.

NEVER COMPROMISE

SAFETY



We always put safety first, so when it comes to helping to protect our passengers, we ask ourselves one simple question: "Is it safe enough for our own families to ride in?" It's our greatest goal to one day drive in a zero-collision society, and the RLX was designed and engineered with that goal in mind. For us, safety is personal.



Cornering

When cornering, the rear Twin Motor Unit (TMU) allows for instant torque transfer side to side in the rear, independently applying positive or negative torque to each wheel. This torque-vectoring effect directly controls the yaw (rotation around a vertical axis), twisting the RLX through corners, tightening its line, and precisely tracing the driver's desired path.



Regeneration

When braking, coasting, or cornering, the ever-efficient system captures kinetic energy and uses it to recharge its advanced lithium-ion battery.



Acceleration

From a standstill, Sport Hybrid SH-AWD® uses the rear electric motors to deliver torque instantly, translating to dramatic acceleration off the line. During light acceleration, only the rear twin electric motors operate; under more aggressive acceleration, the gasoline engine and all three electric motors kick in simultaneously to maximize performance.



Highway Cruise

At low cruising speeds, the system can operate in electric-only mode, with power being sent to only the rear wheels. At higher speeds, up to 100 percent of the power is sent to the front wheels when cruising in a straight line.



Slippery Road

Sport Hybrid SH-AWD monitors speed, wheelspin, driver input, and more to actively and instantly distribute power to the wheels with the most traction or send negative torque to a specific wheel to act as a stabilizing force.

SPORT HYBRID SH-AWD

NOT ALL AWD IS CREATED EQUAL

Sport Hybrid SH-AWD is a groundbreaking, electric-torque-vectoring, all-wheel-drive system we'd argue is the world's most advanced. In fact, the RLX system uses some of the same technology we developed for the NSX.

The Sport Hybrid SH-AWD system consists of a powerful V-6 engine and three electric motors: a high-output electric front motor paired with a rapid-shifting 7-speed Dual-Clutch Transmission and an electric rear Twin Motor Unit for individual, instant torque vectoring. The vehicle is tuned to supply torque instinctively based on driving conditions and the driver's input, resulting in dynamic acceleration, direct response, and precise handling in all conditions.



RLX Sport Hybrid SH-AWD with Advance Package shown in Fathom Blue Pearl.

SPORT HYBRID SH-AWD

Electric Front Motor: Paired with a 7-speed Dual-Clutch Transmission, this motor puts out 109 lb-ft of torque starting from 500 rpm.

Electric Rear Twin Motor Unit: Gives individual instant torque vectoring, adding up to 54 lb-ft of torque to each rear wheel from zero rpm.

Intelligent Power Unit: Contains the lightweight lithium-ion battery pack, junction board, DC converter for 12V systems, and ECUs for the electric motor and battery.

Power Drive Unit: A three-into-one design that converts direct current into alternating current for use by the Sport Hybrid SH-AWD system's three electric motors.

SYSTEM COMBINED

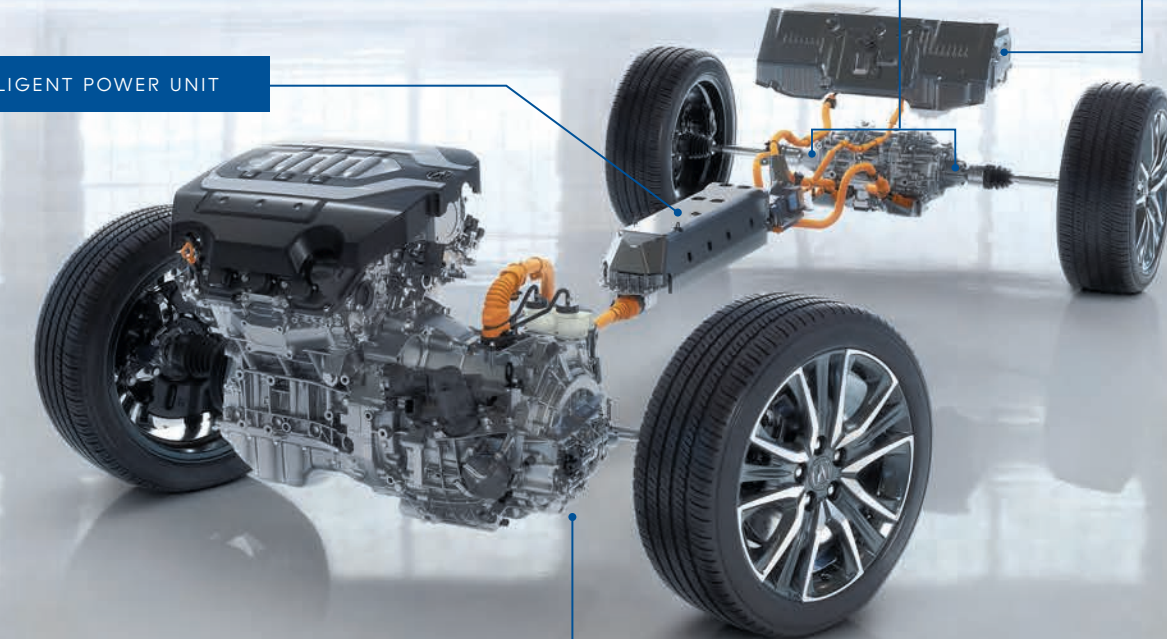
377 HORSEPOWER | 341 LB-FT TORQUE

INTELLIGENT POWER UNIT

POWER DRIVE UNIT

REAR TWIN MOTOR UNIT

FRONT MOTOR UNIT



AcuraWatch

AcuraWatch™ combines a network of next-level sensing technologies designed to increase awareness and help prevent, avoid, and mitigate impacts.* Sensors continuously monitor the vehicle's surroundings and can recognize not only cars, but also the shapes of motorcyclists and pedestrians—even shrubbery and mailboxes. AcuraWatch senses potential threats and can provide driving input to keep you in the center of a lane or at a set interval from cars detected ahead and can also provide emergency braking to help avoid collisions. The new Traffic-Jam Assist can activate from a complete stop, supporting the driver with steering, throttle, and brake inputs in stop-and-go traffic.

In addition, our available Surround-View Camera system creates a 360-degree view of the space around the RLX. With six unique camera views, parking sensor information, and dynamic guidelines that show your expected path, you'll feel more connected to your surroundings than ever before.¹

a. Collision Mitigation Braking System™ (CMBS™)²
Forward Collision Warning (FCW) System²

b. Lane Departure Warning (LDW) System³
Lane Keeping Assist System (LKAS)⁴
Road Departure Mitigation (RDM) System³

c. Adaptive Cruise Control (ACC) with Low-Speed Follow⁵

d. Traffic-Jam Assist (TJA)⁶

e. Blind spot information (BSI) System⁷

f. Rear Cross Traffic Monitor¹

g. Multi-View Rear Camera with Dynamic Guidelines⁸
Surround-View Camera System

a.



b.



c.



d.



e.



f.



g.



RLX Sport Hybrid SH-AWD with Advance Package shown in Brilliant Red Metallic.

*Driver remains responsible for safely operating vehicle and avoiding collisions.

SAFETY-DRIVEN INNOVATION



ACE BODY STRUCTURE

Acura's next-generation Advanced Compatibility Engineering™ (ACE™) body structure is designed to absorb and disperse frontal impact energy in a collision, so less force is transferred to what really matters: the people inside. But we didn't stop there. Crash compatibility is designed into the structure as well, so in the event of a collision with another vehicle, the occupants of all vehicles involved are more protected.

The RLX received the highest possible overall safety rating from the National Highway Traffic Safety Administration (NHTSA), a 5-Star Overall Vehicle Score.⁹

FULLY

LOADED

It's not enough to simply be connected anymore. We always need tools that work harder—tools that connect drivers seamlessly to the information and media they want and need. From social feeds and safety features to navigation that can reroute you for a faster commute, the RLX is packed with the latest technology.



RLX Sport Hybrid SH-AWD with Advance Package shown in Platinum White Pearl with accessory 19-inch Dark Chrome-Look alloy wheels.



CONNECTIVITY

HAVE MAJOR CONNECTIONS,
EVERYWHERE

AcuraLink® pairs with your smartphone so you can keep up on emails, texts, and tweets. Check the weather or find nearby restaurants and points of interest, and drive with the assurance of AcuraLink Assist services.¹⁰ If traffic backs up, AcuraLink Real-Time Traffic™ with Traffic Rerouting™ pulls surface-street information, including traffic flow, incidents, and construction.¹¹

RLX Sport Hybrid SH-AWD with Advance Package shown with Ebony interior.



ELS

HEAR MUSIC THE WAY MUSICIANS INTENDED

Eight-time Grammy® award-winning recording engineer and producer Elliot Scheiner helped design the critically acclaimed ELS Studio® Premium Audio System. It reproduces music exactly as it's heard in the recording studio. Whether it's on the air, online, or from your own music library, even the most familiar music will become an all-new listening experience.



KRELL

AUDIOPHILES, REJOICE

After decades of creating top-level home audio, Krell® replicated the same high-end performance for the Acura RLX Sport Hybrid SH-AWD. Enjoy the unparalleled Krell Premium Audio System with a 14-speaker layout. Designed for the true audiophile, it creates an incredibly immersive sound experience. The system's tweeters are composed of lightweight magnesium cones that create extraordinarily detailed high-end frequencies with no trace of harshness. The midbass drivers are made from Zylon, the world's strongest superfiber, which moves quickly to musical input and stops when the musical signal stops, resulting in less vibration.

POWER UNIT

	RLX	SPORT HYBRID SH-AWD
ENGINE		
Engine Type	Aluminum-Alloy V-6	
Displacement (liters)	3.5	
Horsepower @ rpm (SAE net)	310 @ 6,500	310 @ 6,500
Torque (lb-ft @ rpm) (SAE net)	272 @ 4,500	273 @ 4,700
Valvetrain	24-Valve, SOHC i-VTEC®	
Variable Cylinder Management™ (VCM®)	•	•
Fuel Injection	Direct	
Idle Stop	•	
Tune-Up Interval	100K +/- Miles No Scheduled Tune-Ups	

THREE-MOTOR SYSTEM

Front Motor Horsepower @ rpm	47 @ 3,000
Front Motor Torque (lb-ft @ rpm)	109 @ 500-2,000
Dual Rear Motors Horsepower @ rpm	(36 + 36) @ 4,000
Dual Rear Motors Torque (lb-ft @ rpm)	(54 + 54) @ 0-2,000
System-Combined Power (hp)	377
System-Combined Torque (lb-ft)	341
Battery Type	Lithium-Ion (Li-Ion)

DRIVETRAIN

Front-Wheel Drive	•	•
10-Speed Automatic Transmission	•	•
Sequential SportShift Paddle Shifters	•	•
Sport Hybrid SH-AWD® (Super Handling All-Wheel Drive™)	•	•
Motor-Integrated 7-Speed DCT (Dual-Clutch Transmission)	•	•

CHASSIS

Double-Wishbone with Split Lower Control Arm Front Suspension	•	•
Multi-Link Rear Suspension	•	•
Stabilizer Bar (mm, front/rear)	33.0/24.6	33.2/24.6
Amplitude Reactive Dampers	•	•
Precision All-Wheel Steer™ (P-AWS®) System	•	•
Electric Power-Assisted Rack-and-Pinion Steering (EPS)	•	•
Agile Handling Assist®	•	•
Ventilated Front Disc/Solid Rear Disc Brakes (in)	12.3/12.2	13.0/12.2
Aluminum-Alloy Wheels	19 x 8.0 Pewter Gray Metallic Machine-Finished 15-Spoke Noise-Reducing	19 x 8.0 Shark Gray Machine-Finished 15-Spoke Noise-Reducing
Tires	245/40 R19 High-Performance All-Season	
Turning Diameter, Curb to Curb (ft)	40.5	40.5

FUEL ECONOMY RATINGS - WEIGHT

	RLX	SPORT HYBRID SH-AWD
EPA Fuel Economy Ratings ¹² (city/highway/combined)	20/30/23	29/30/29
Recommended Fuel ¹³	Premium Unleaded 91-Octane	
Fuel Tank Capacity (U.S. gal)	18.5	15.1
Curb Weight	3,977	4,380
Weight Distribution (% front/rear)	61/39	57/43

DIMENSIONS

INTERIOR

Headroom (in, front/rear)	37.6/36.9	37.6/36.9
Legroom (in, front/rear)	42.3/38.8	42.3/38.8
Shoulder Room (in, front/rear)	59.6/57.0	59.6/57.0
Hiproom (in, front/rear)	55.9/54.5	55.9/54.5
EPA Passenger Volume (cu ft)	102.1	102.1
EPA Cargo Volume (cu ft)	14.9	12

EXTERIOR

Length (in)	198.1	198.1
Width (in)	74.4	74.4
Height (in)	57.7	57.7
Wheelbase (in)	112.2	112.2
Track (in, front/rear)	64.3/64.2	64.3/64.2
Ground Clearance (in, unladen)	4.5	4.5

EXTERIOR

	RLX	SPORT HYBRID SH-AWD
Power Moonroof	•	•
Jewel Eye® LED Headlights	•	•
LED Fog Lights		•
LED-Illuminated Taillights, Brake Lights, Directional Signals, Side Mirror-Integrated Directional Signals, Rear License and Center High Mount Stop Light	•	•
LED-Illuminated Door Handles	•	•
Power-Folding Side Mirrors	•	•
Acoustic Windshield	•	•
Acoustic Front and Rear Side Glass	•	•
Remote-Operated Windows and Moonroof-Open Function	•	•

INTERIOR

Tri-Zone, Automatic Climate Control with Humidity Control and Air Filtration	•	
Electric Air Conditioning with Tri-Zone, Automatic Climate Control with Air Quality Sensor and Air Filtration		•
GPS-Linked Climate Control	•	•
Keyless Access System with Acura Personalized Settings	•	•
Pushbutton Ignition	•	•
Electronic Gear Selector	•	•
Power Windows with Auto-Up/Down and Auto-Reverse	•	•
Sport Seats with Perforated Milano Premium Leather-Trimmed Interior with Contrast Stitching and Piping	•	•
Driver's and Front Passenger's 12-Way Power Seat with 4-Way Power Lumbar Support	•	•
Heated Front Seats	•	•
Ventilated Front Seats		•
Rear-Seat Center Armrest with Locking Trunk Pass-Through	•	
Heated Second Row Seats (outboard positions)		•
Power Rear Sunshade		•
Rear Door Side Sunshades (manual)		•
Electronic Tilt and Telescopic Steering Column	•	•
Heated Steering Wheel		•
Leather-Wrapped Steering Wheel	•	•
Steering Wheel-Mounted Controls	•	•
High-Gloss Wood-Finished and Metal Trim	•	•
Multi-Function Front Center Console with Left/Right Opening and Sliding Armrest	•	•
Active Sound Control	•	•
Ambient Cabin Lighting	•	•
Rear Footwell Lighting		•
Automatic-Dimming Rearview Mirror	•	•
Retained Accessory Power for Windows and Moonroof	•	•
12-Volt Power Outlets (center console and front armrest)	•	•

AcuraWatch™ ADVANCED SAFETY & DRIVER-ASSISTANCE TECHNOLOGY

	RLX	SPORT HYBRID SH-AWD
Traffic-Jam Assist (TJA)	•	•
Forward Collision Warning (FCW) System	•	•
Collision Mitigation Braking System™ (CMBS™)	•	•
Head-Up Warning (HUW)	•	•
Lane Departure Warning (LDW) System	•	•
Lane Keeping Assist System (LKAS)	•	•
Road Departure Mitigation (RDM) System	•	•
Blind spot information (BSI) System	•	•
Adaptive Cruise Control (ACC) with Low-Speed Follow	•	•
Multi-View Rear Camera with Dynamic Guidelines	•	•
Surround-View Camera System		•
Rear Cross Traffic Monitor	•	•

SAFETY & SECURITY

Next-Generation Advanced Compatibility Engineering™ (ACE™) Body Structure	•	•
Advanced Front Airbags (SRS)	•	•
Front Side Airbags	•	•
Side Curtain Airbags	•	•
Driver's Knee Airbag	•	•
Vehicle Stability Assist™ (VSA®) with Traction Control and Motion Adaptive Steering	•	•
4-Wheel Anti-Lock Braking System (ABS)	•	•
Electronic Brake Distribution (EBD)	•	•
Brake Assist	•	•
LED Daytime Running Lights (DRL)	•	•
Reactive Force Accelerator Pedal		•
Tire Pressure Monitoring System (TPMS) with Location and Pressure Indicators	•	•
Theft-Deterrent System with Electronic Immobilizer	•	•
Tire Sealant and Repair Kit	•	•

DRIVER CONVENIENCE

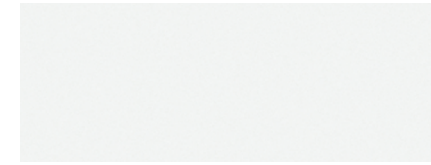
Hill Start Assist	•	•
Electric Parking Brake with Automatic Brake Hold	•	•
Parking Sensors (front and rear)		•
Auto-On/Off Headlight Operation with Wiper Integration	•	•
Rain-Sensing Windshield Wipers	•	•
Windshield De-Icer		•
Heated Side Mirrors with Reverse Gear Tilt-Down	•	•
Auto-Dimming Side Mirrors		•
HomeLink®	•	•

AUDIO & CONNECTIVITY

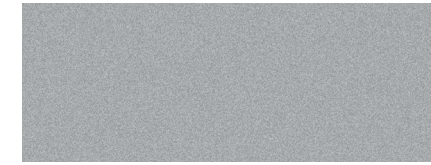
	RLX	SPORT HYBRID SH-AWD
Acura Navigation System with 3D View	•	•
AcuraLink Real-Time Traffic™ with Street and Freeway Conditions Traffic Rerouting™	•	•
AcuraLink®	•	•
SMS, MMS Text Message and Email Capability ¹⁴	•	•
On Demand Multi-Use Display™ (ODMD™)	•	•
Head-Up Display (HUD)	•	•
Color Multi-Information Display (MID) with Turn-by-Turn Guidance	•	•
Remote Engine Start with Vehicle Feedback	•	•
Bluetooth® HandsFreeLink® Wireless Telephone Interface ¹⁵	•	•
Krell® Premium Audio System with 14 Speakers	•	•
Acura/ELS Studio® Premium Audio System with 14 Speakers	•	•
Song By Voice®	•	•
Aha™ Compatibility	•	•
HD Radio®	•	•
SiriusXM® Satellite Radio ¹⁶	•	•
Pandora® Compatibility ¹⁷	•	•
USB Audio Interface with iPod® Integration ¹⁸	•	•
Bluetooth® Streaming Audio ¹⁵	•	•
MP3/Auxiliary Input Jack	•	•
Speed-Sensitive Volume Compensation (SVC)	•	•
Maintenance Minder™ System	•	•

COLOR AND TRIM

Exterior



Platinum White Pearl



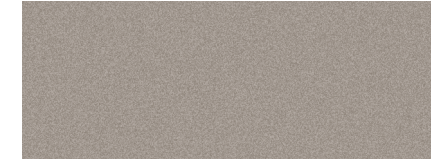
Lunar Silver Metallic



Modern Steel Metallic



Fathom Blue Pearl



Gilded Pewter Metallic

Premium Exterior



Brilliant Red Metallic



Majestic Black Pearl

Interior

Milano premium leather with contrast stitching and piping



Ebony



Espresso

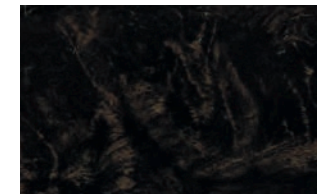


Graystone



Seacoast

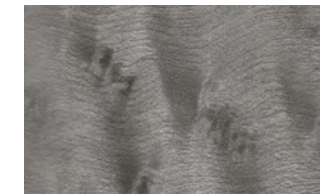
Interior Trim



Ebony



Espresso



Graystone



Seacoast

Acura Genuine Accessories

When it comes to personalizing, choose Acura Genuine Accessories, which are crafted with the same precision and attention to detail as the rest of your Acura. See your Acura dealer for a complete list of accessories or visit acura.com.

 **ACURA** | GENUINE ACCESSORIES



Popular Accessories:

- LED Fog Lights
- Logo Pattern Projector
- Floor Mat Set—Premium
- High-Wall, All-Season Floor Mats
- Heated Steering Wheel
- Backup Sensors
- Door-Edge Film
- Door-Edge Guards
- Rear Bumper Protector


OWNER BENEFITS

When you purchase a vehicle with the exceptional quality of an Acura, you expect service and support to be of the same caliber. After all, a premium automobile is only part of the ownership experience. With Acura, you also get a commitment: to personalized care, to attentive service. This commitment is apparent the moment you first enter an Acura dealership and for years down the road. It comes from a belief that every aspect of owning an Acura should be an enjoyable and rewarding experience.

Acura Limited Warranties

All Acura vehicles and any Acura Genuine Accessories installed by the dealer at the time of vehicle purchase have a four-year/50,000-mile limited warranty. Acura vehicles are also covered by a six-year/70,000-mile limited powertrain warranty. In addition, outer-body rust-through is covered by a five-year/unlimited-mile limited warranty.¹⁹

Acura Financial Services

 From leasing and financing to protecting your vehicle after your warranty expires to helping you determine which Acura fits your budget, Acura Financial Services® (AFS) provides you with the convenience, options, and service to complement your life. For more information, go to www.acurafinancialservices.com.²⁰

Acura Care

Additional peace of mind can be had with the Acura Care® program—comprehensive vehicle and travel protection beyond the initial warranty period. See your Acura dealer for all the features and benefits available with this program.

Total Luxury Care® (TLC)®

Acura’s commitment to your satisfaction doesn’t end with the delivery of a world-class vehicle. As an Acura owner, you’ll enjoy an array of services, like the Acura Concierge™ for 24-hour weather information, insurance claims assistance, or to help you plan a trip; trip-interruption benefits, like alternative transportation, lodging, and meals; and a 24-Hour Roadside Assistance program.²¹

AcuraLink Owners Mobile App

Use your smartphone to connect with an Acura agent at the push of a button. Access a full range of Acura Roadside Assistance services using your Android® device or iPhone®, including comprehensive towing, lockout assistance, battery jump-start, tire change, and fuel delivery with your phone’s GPS technology providing your exact location. You can use the app to view scheduled time of arrival and contact information for the dispatched service provider. The app also offers a priority emergency button for urgent situations. Visit the Apple iTunes Store or shop Google Play to download this free app.



1-800-to-Acura

Operators are available 24 hours a day to help answer your Acura questions.

Acura.com

Learn more about Acura vehicles, including the latest specifications, see photo galleries and technology videos, and find out how our vehicles compare with the competition. You can also build and price your Acura, see current offers, and even get a quote from an internet-certified Acura dealer.

Owners.Acura.com

The online help doesn’t end when you take possession of your vehicle. Your complimentary Acura Owners personalized website gives the most current information about your vehicle, provides tips on how to care for your Acura, lets you keep a personalized maintenance record, sends you service reminders, and lets you schedule service appointments online.

©2018 Acura. Acura, NSX, RLX, the stylized “A” logo, Acura Care, Acura Concierge, Acura Financial Services, AcuraLink, AcuraLink Real-Time Traffic, AcuraWatch, Advanced Compatibility Engineering (ACE), Agile Handling Assist, Collision Mitigation Braking System (CMBS), HandsFreeLink, i-VTEC, Jewel Eye, Maintenance Minder, On Demand Multi-Use Display (ODMD), Precision All-Wheel Steer (PAWS), Song By Voice, Sport Hybrid Super Handling All-Wheel Drive (SH-AWD), Traffic Rerouting, Total Luxury Care (TLC), Variable Cylinder Management (VCM), and Vehicle Stability Assist (VSA) are trademarks or registered trademarks of Honda Motor Co., Ltd. Covered by patent rights issued and/or pending. Specifications, features, illustrations, and equipment shown in this catalog are based on the latest available information at the time of publication. Although descriptions are believed to be correct, accuracy cannot be guaranteed. All images contained herein are either owned by American Honda Motor Co., Inc., or used under a valid license. It is a violation of federal law to reproduce these images without express written permission from American Honda Motor Co., Inc., or the individual copyright owner of such images. American Honda Motor Co., Inc., reserves the right to make changes at any time, without notice or obligation, in colors, specifications, accessories, materials, and models. Aha, the Aha logo, and the Aha trade dress are trademarks or registered trademarks of Harman International Industries. Android is a trademark of Google, Inc. The *Bluetooth*® word mark and logos are owned by the *Bluetooth* SIG, Inc., and any use of such marks by Honda Motor Co., Ltd., is under license. ELS Studio is a registered trademark of Panasonic Corporation of North America. All rights reserved. GRAMMY is a registered trademark of The Recording Academy and is used under license. HD Radio is a proprietary trademark of iBiquity Digital Corporation. HomeLink® is a registered trademark of Genex Corporation. iPhone and iPad are registered trademarks of Apple, Inc. Krell® is a registered trademark of Krell Industries, LLC. Pandora, the Pandora logo, and the Pandora trade dress are trademarks or registered trademarks of Pandora Media, Inc. Used with permission. ©2017 Sirius XM Radio, Inc. SiriusXM is a trademark of XM Satellite Radio, Inc. Make an intelligent decision. Fasten your seat belt. 1 The system is not a substitute for your own visual assessment before backing up; system accuracy will vary based on weather, size of object, and speed. Driver remains responsible for safely operating vehicle and avoiding collisions. 2 The Collision Mitigation Braking System (CMBS) with Forward Collision Warning (FCW) cannot detect all objects ahead and may not detect a given object; accuracy will vary based on weather, speed, and other factors. System operation affected by extreme interior heat. FCW does not apply braking, and CMBS only is designed to mitigate crash forces. Driver remains responsible for safely operating vehicle and avoiding collisions. 3 Road Departure Mitigation (RDM) with Lane Departure Warning (LDW) only alerts drivers when lane drift is detected without a turn signal in use. RDM can apply mild steering torque to assist in maintaining proper lane position and/or brake pressure to slow the vehicle’s departure from a detected lane. The system may not detect all lane markings or lane/road departures; accuracy will vary based on weather, speed, and road conditions. System operation affected by extreme interior heat. Driver remains responsible for safely operating vehicle and avoiding collisions. 4 The Lane Keeping Assist System (LKAS) only assists the driver in maintaining proper lane position when lane markings are identified without a turn signal in use and can only apply mild steering torque to assist. LKAS may not detect all lane markings; accuracy will vary based on weather, speed, and road condition. System operation affected by extreme interior heat. Driver remains responsible for safely operating vehicle and avoiding collisions. 5 Adaptive Cruise Control (ACC) with Low-Speed Follow cannot detect all objects ahead and may not detect a given object; accuracy will vary based on weather, speed, and other factors. System operation affected by extreme interior heat. ACC

should not be used in heavy traffic, poor weather, or on winding roads. Driver remains responsible for safely operating vehicle and avoiding collisions. 6 TrafficJam Assist (TJA) only assists the driver in maintaining proper lane position when lane markings are identified without a turn signal in use and can only apply mild steering torque to assist. TJA may not detect all lane markings; accuracy will vary based on weather, speed, and road condition. System operation affected by extreme interior heat. Driver remains responsible for safely operating vehicle and avoiding collisions. 7 The system is not a substitute for your own visual assessment before changing lanes; system accuracy will vary based on weather, size of object, and speed. Driver remains responsible for safely operating vehicle and avoiding collisions. 8 Always visually confirm that it is safe to drive before backing up; the rearview camera display does not provide complete information about all conditions and objects at the rear of your vehicle. Driver remains responsible for safely operating vehicle and avoiding collisions. 9 Government 5-Star Safety Ratings are part of the National Highway Traffic Safety Administration’s (NHTSA’s) New Car Assessment Program. For additional information on the 5-Star Safety Ratings program, please visit www.safercar.gov. 10 Certain AcuraLink services are available only where compatible cellular and GPS coverage is available. Subscription agreement required to enroll and terms and conditions of subscription agreement apply to services. Standard text rates and/or data usage may apply to communications received by email or SMS/text message. Visit your dealer or acura.com/acuralink for more information on standard and available features. 11 Real-Time Traffic with Traffic Rerouting is available only where compatible cellular and GPS coverage is available. Subscription agreement required to enroll and terms and conditions of subscription agreement apply to services. 12 Based on 2018 EPA mileage ratings. Use for comparison purposes only. Your actual mileage will vary depending on how you drive and maintain your vehicle, driving conditions, battery pack condition and age, and other factors. 13 Use of lower-octane gasoline can cause an occasional metallic knocking noise in the engine and will result in decreased engine performance. Use of gasoline with a pump octane less than 91 can lead to engine damage. 14 Based on compatibility. Cellular connection required. Your wireless carrier’s rate plans apply. See your dealer for details. 15 Visit www.handsfreelink.com for a list of compatible phones and available features. Compatible with select phones with *Bluetooth*® technology. Your wireless carrier’s rate plans apply. 16 SiriusXM services require a subscription after any trial period. If you decide to continue your SiriusXM service at the end of your trial subscription, the plan you choose will automatically renew and bill at then-current rates until you call SiriusXM at 1-866-635-2349 to cancel. See our Customer Agreement for complete terms at www.siriusxm.com. Fees and programming subject to change. XM satellite service is available only to those at least 18 years of age in the 48 contiguous United States and D.C. 17 Compatible with select smartphones. See: www.pandora.com/anywhere/mobile. Not all devices are compatible with USB connection. Your wireless carrier’s rate plans apply. 18 The USB Audio Interface is used for direct connection to and control of some current digital audio players and other USB devices that contain MP3, WMA, or AAC music files. Some USB devices with security software and digital rights-protected files may not work. Please see your Acura dealer for details on compatibility. Windows Media® is a trademark or registered trademark of Microsoft Corporation in the United States and/or other countries. 19 Ordinary maintenance items or adjustments, parts subject to normal wear and replacement, and certain other items are excluded. See your Acura dealer for the items and conditions of limited warranties. 20 Acura Financial Services is a DBA of American Honda Finance Corporation. 21 See your local dealer for details about Total Luxury Care (TLC) Roadside Assistance and Acura Concierge service.



NSX shown with optional equipment in Berlina Black. RLX Sport Hybrid SH-AWD with Advance Package shown in Brilliant Red Metallic. MDX Sport Hybrid SH-AWD with Advance Package shown in White Diamond Pearl.